

SOUTH AMERICA - SOUTH AMERICA 'BIG FIVE' EXPLORER



INTRODUCTION

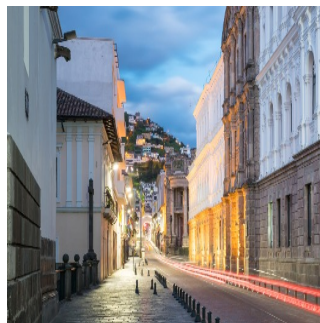
Choose this Tailor-Made itinerary or customise to create your own unique journey. Departs daily to suit your travel plans. Price based on Standard accommodation. Superior or Deluxe also available.

This 27-day journey covers the 'Big Five' of South America. After your South American introduction in Buenos Aires, it's time to discover Iguazu Falls. After crossing the falls into Brazil, take in the city sights of Rio de Janeiro before continuing to Lima, Puno and Cusco. Delve into the history of the Incas as you wander the streets of Cusco before travelling to Machu Picchu, Lost City of the Incas. Next is the Amazon Rainforest where the sights and sounds of the jungle will captivate you. Your journey then takes you onto Ecuador and its colonial capital Quito before flying you to the spectacular Galapagos Islands where you will discover its fascinating wildlife and other-worldly landscape.

ITINERARY

DAY 1: Arrival transfer in Buenos Aires

On arrival, please make your way through to the Arrivals Hall where our representative will be waiting for you to transfer you to your hotel. This service includes a driver and local English speaking guide, who will provide you with any useful information needed for your stay. He/she will be holding a sign with your name on it.



TRIP CODE

LATSSAB5

DEPARTURE

Daily

DURATION

27 Days

LOCATIONS

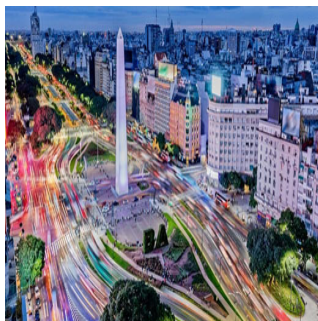
Argentina, Brazil, Peru, Machu Picchu, Amazon, Galapagos Islands



SOUTH AMERICA - SOUTH AMERICA 'BIG FIVE' EXPLORER

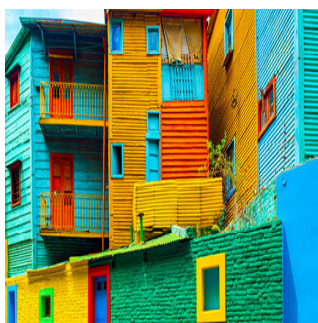
DAY 1: Buenos Aires

Buenos Aires, Argentina's elegant, historic and cosmopolitan capital, is known as the "Paris of the South" due to its European atmosphere with glamorous avenues lined with fashionable shops and Parisian-style restaurants and cafes. Located on the western shore of the estuary of the Río de la Plata, Buenos Aires has many fascinating neighbourhoods to explore including the colourful and lively La Boca, home to art galleries and tango shows; San Telmo with its restored mansions and antique stores and Recoleta, the city's most exclusive area.



DAY 2: Morning Highlights of Buenos Aires City Tour

You will be collected from your hotel for your three-hour morning tour visiting the most important highlights of the city of Buenos Aires. Discover the history of the Plaza de Mayo Square, the site of Argentina's most important historical events - see its surroundings and the most emblematic buildings and learn all about them. Then enjoy Mayo Avenue and wonder in awe at the oldest residential neighbourhood in Buenos Aires: San Telmo. Live and feel the original Tango in the neighbourhood of La Boca: walk along Caminito Street and enjoy the Dancers and souvenir shops. See the mythical Boca Juniors soccer stadium. Contemplate the modernization of the city whilst traveling along Puerto Madero and its exclusive docks, full of excellent restaurants and large offices. Pass through the Retiro neighbourhood and move on to see Palermo and its most exclusive residential area before finally arriving at Recoleta. The tour comes to an end near the Recoleta Cemetery. Here you can choose to be taken back to the hotel with the group, or to continue unguided into the cemetery, where you can find the final resting place of Eva Peron, "Evita." Please note: This is a small group tour. If you wish to stay behind and visit the Recoleta Cemetery, there is an entrance fee of approximately \$15 USD, payable locally, you would then need to make your own way back to the hotel.



TRIP CODE

LATSSAB5

DEPARTURE

Daily

DURATION

27 Days

LOCATIONS

Argentina, Brazil, Peru, Machu Picchu, Amazon, Galapagos Islands



SOUTH AMERICA - SOUTH AMERICA 'BIG FIVE' EXPLORER

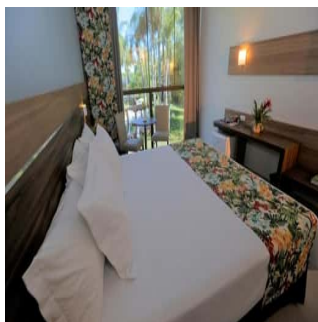
DAY 2: El Querandi Tango Show & Dinner

This evening you will be collected from your hotel to experience a Tango Show with dinner. This is an intimate & passionate tango show, housed in a cozy wood-panelled 19th century building with a colourful history as a meeting point for poets and students in the heart of Buenos Aires's historic centre. After being abandoned in the late 1970s, the bar was restored and reopened in 1992 as El Querandí Tango Hall. The show is directed by Claudio Campos, with musical arrangements by Ado Falasca, and it smoothly charts the history of Argentina's most authentic artistic expression from its origins to the modern day. The dinner is better than many, and at just over an hour long, the show is the perfect length. The three house singers, six dancers and four musicians put on a great show. Dinner will be served from 8.30pm followed by the show commencing at 10.00pm. Please note timings are subject to change and will be confirmed directly to you. On completion of the show, you will be taken to your hotel. Please note this is a small group tour.



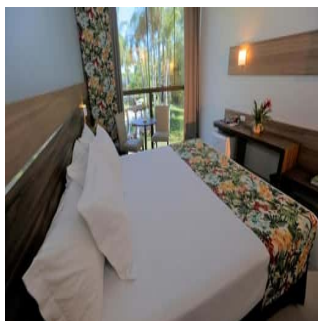
DAY 3: Transfer to the airport for onward destination

You will be collected from your hotel at the appropriate time and transferred to the airport for your onward flight. This service includes a driver only.



DAY 3: Arrival transfer in Iguazu

On arrival, please make your way through to the Arrivals Hall where our representative will be waiting for you to transfer you to your hotel. He/she will be holding a sign with your name on it. Should you not be able to locate them, please refer to the front of your itinerary for emergency contact details of our representative office. Please note this service includes driver and local English speaking guide.



TRIP CODE

LATSSAB5

DEPARTURE

Daily

DURATION

27 Days

LOCATIONS

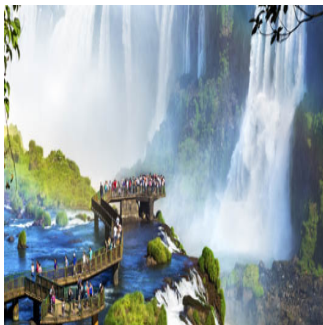
Argentina, Brazil, Peru, Machu Picchu, Amazon, Galapagos Islands



SOUTH AMERICA - SOUTH AMERICA 'BIG FIVE' EXPLORER

DAY 3: Iguazu

The spectacular Iguazu Falls that straddle the Argentine-Brazil border, are made up of 275 individual waterfalls lining a 2.7km wide horseshoe-shaped gorge. The Falls are located where the Iguazu River cascades over the edge of the Paraná Plateau. The Falls can be viewed from both the Argentinian and the Brazilian sides, the Brazilian side offering a broader, panoramic view, with the Argentinian side offering a series of catwalks that allow you to experience the Falls from close range.



DAY 4: Iguazu Falls - Argentinean Side

Early morning pick up from your hotel for your full day of exploring the Argentine side of the falls. This tour always starts early in order to beat the crowds and get the first train to the Devil's Throat. There are walkways over the islands which take you to a balcony over the falls and the most spectacular view of the entire Devil's Gorge. You will then have plenty of time to walk the 800 metres of paths on the upper circuit. These new suspended walkways are detached from the jungle surface so as to protect the fauna by preventing disruption of the natural trails. From this circuit you have a higher sight of the falls, providing you with a magnificent panoramic view. It takes around one hour to cover the upper circuit. The lower circuit contains 600 metres of walkways, also detached from the jungle floor, and has great views from below and around the falls. Once you have finished all the circuits, return to the visitor centre where your vehicles will be waiting to transfer you back to your hotel. Please note there is some degree of difficulty as the path includes many stairs, particularly on the lower circuit. National Park fee is included.



NO IMAGE AVAILABLE

TRIP CODE

LATSSAB5

DEPARTURE

Daily

DURATION

27 Days

LOCATIONS

Argentina, Brazil, Peru, Machu Picchu, Amazon, Galapagos Islands



SOUTH AMERICA - SOUTH AMERICA 'BIG FIVE' EXPLORER

DAY 5: Iguazu Brazilian Falls and Transfer to Airport

After checking out, you will be collected from your hotel for your tour of the Brazilian Falls and transfer to the airport. See the falls from the Brazilian side of the border. After arriving at the visitor centre, we board buses for a tour of the park. Equipped with panoramic windows, the buses are designed to maximize your views of the falls, while the walkways and steps allow you to get up close to the spray. Views of the Floriania Falls, the Devil's Gorge Canyon and the Iguazu River are spectacular and are guaranteed to impress. National park fee included. After the tour you will be transferred to the airport in time to check in for your flight. This is a small group tour and transfer.



TRIP CODE

LATSSAB5

DEPARTURE

Daily

DURATION

27 Days

LOCATIONS

Argentina, Brazil, Peru, Machu Picchu, Amazon, Galapagos Islands

DAY 5: Arrival Transfer in Rio de Janeiro

On arrival, please make your way through to the Arrivals Hall where our representative will be waiting for you to transfer you to your hotel. He/she will be holding a sign with your name on it. Please note this service is with a driver only. Please note, once you arrival at your hotel you will receive a welcome pack, which will provide you with all the useful information you will need about your trip in Brazil.



DAY 5: Rio de Janeiro

Known as the "Cidade Maravilhosa", or Marvellous City, Rio never fails to amaze with its sandy beaches, carefree lifestyle and unparalleled natural beauty. As the capital of Brazil until 1960, Rio is today one of the most culturally and economically prominent cities in the country, receiving more tourists than any other part of Brazil.



SOUTH AMERICA - SOUTH AMERICA 'BIG FIVE' EXPLORER

DAY 6: Corcovado & Sugarloaf with Lunch

After departing from the hotel, the tour takes a scenic drive from Copacabana beach, continuing along Botafogo beach and passing the Palácio Guanabara, official residence of the State's Governor, on the way to Corcovado Hill (704m), and the greatest national icon - The Christ Redeemer of Rio de Janeiro. Here, you will have time to enjoy panoramic views of Rio and appreciate the giant statue, which was recently named as one of the seven new wonders of the world. From here, the tour continues to the district of Urca and the world-famous Sugar Loaf, where you will board the first cable car to the top of Urca Hill (215m), which offers spectacular views of Guanabara Bay. A second cable car will take you on to the Sugar Loaf (395m), giving you a chance to take in the spectacular 360-degree views of the city and surrounds. Upon descending from the Sugarloaf, we pass through the famous beaches of Copacabana and Ipanema en route to a traditional Brazilian BBQ lunch at a local Churrascaria (lunch is included - all beverages are at your own expense). Following lunch, the tour continues with a visit to the Maracanã Stadium (Bellini's statue and Hall of Fame. Entry into the stadium is not included) and a stop at the Sambadrome. While in the city's historic downtown area, you will have a chance to see the Duque de Caxias Palace, Itamaraty Palace, Tiradentes Square and Lapa Arches, followed by a visit to the Metropolitan Cathedral. From here the tour will also make a quick stop to visit the Selaron Stairs, an amazing urban work of art by the late Jorge Selaron. Returning to the hotel along Aterro do Flamengo, we pass by the Monument to the Fallen in World War II and the beaches of Flamengo and Botafogo. Lunch and all entrance fees (for Corcovado & Sugarloaf) are included.



DAY 7: Rio de Janeiro - Free Day

Famed for its breathtaking setting, Rio is undoubtedly one of the most attractive cities in the world. Enjoy your day at leisure by exploring some of its remarkable sites or take the opportunity to relax on one of Rio's famous beaches such as Ipanema or Copacabana.



TRIP CODE

LATSSAB5

DEPARTURE

Daily

DURATION

27 Days

LOCATIONS

Argentina, Brazil, Peru, Machu Picchu, Amazon, Galapagos Islands



SOUTH AMERICA - SOUTH AMERICA 'BIG FIVE' EXPLORER

DAY 8: Transfer to the airport for onward destination

You will be collected from your hotel at the appropriate time and transferred to the airport for your onward flight.



DAY 8: Arrival transfer in Lima

On arrival, please make your way through to the Arrivals Hall where our representative will be waiting for you to transfer you to your hotel. This service includes a driver and local English speaking guide, who will provide you with any useful information needed for your stay. He/she will be holding a sign with your name on it. Should you not be able to locate them, please refer to the front of your itinerary for emergency contact details of our representative office.



TRIP CODE

LATSSAB5

DEPARTURE

Daily

DURATION

27 Days

LOCATIONS

Argentina, Brazil, Peru, Machu Picchu, Amazon, Galapagos Islands



SOUTH AMERICA - SOUTH AMERICA 'BIG FIVE' EXPLORER

DAY 8: Lima

Lima, the capital of Peru, sits on the country's arid Pacific coast. Founded in 1535, its colonial centre is well preserved, but today Lima is a bustling metropolis and one of South America's largest cities. The city is home to the various museums including the Museo Larco that houses a collection of pre-Columbian art and the Museo de la Nación, tracing the history of Peru's ancient civilizations. Lima is known as the "gastronomical capital of the Americas", encompassing specialties from ceviche and traditional coastal cooking to refined global fare. It even boasts several of the top restaurants in the world. If you have any free days during your stay, we recommend that you take a visit to the Larcomar shopping centre. Located on a cliff with spectacular views of the Pacific Ocean in the heart of Lima's Miraflores district, it is worth the visit. You can either walk from Barranco or have your hotel arrange a taxi for you. Additionally, Huacra Pucllana is a massive adobe and clay pyramid built between 200 and 700 AD. It served as an important ceremonial and administrative centre for the advancement of Lima culture, constructed from seven staggered platforms. Take a taxi to this amazing site in Miraflores (closed on Tuesday's). You can take a tour upon arrival, or simply admire the structure while sipping a coffee or a pisco sour in the lovely Peruvian restaurant overlooking the site (open for lunch until 3pm). Or if you are interested in history and archaeology, a visit to the one-of-a-kind private Museo Larco could be an unforgettable experience. Discover over 5000 years of ancient Peruvian civilisations and the intimate bond that existed between pre-Columbian societies and the natural world. Open daily, however it is a good idea to check if a guided tour in English is available prior to visiting.



DAY 9: Lima - City Tour

Today you will be collected from your hotel for your tour of Lima, the Colonial 'City of Kings'. On the city tour you will visit a number of well-known sites including the Cathedral, the Presidential Palace, Santo Domingo Convent and the Plaza de Armas. This is a chance to appreciate Lima's magnificent Colonial architecture as well as vignettes of its pre-Colombian past. On completion of this tour, you will be taken to your hotel. Please note this is a small group tour.



TRIP CODE

LATSSAB5

DEPARTURE

Daily

DURATION

27 Days

LOCATIONS

Argentina, Brazil, Peru, Machu Picchu, Amazon, Galapagos Islands



SOUTH AMERICA - SOUTH AMERICA 'BIG FIVE' EXPLORER

DAY 10: Transfer to the airport for onward destination

You will be collected from your hotel at the appropriate time and transferred to the airport for your onward flight.



DAY 10: Transfer Juliaca Airport to Puno via Sillustani Ro

On arrival, please make your way through to the Arrivals Hall where our representative will be waiting for you to transfer you to your hotel. He/she will be holding a sign with your name on it. Please note this service is with a driver only. Enroute to your hotel, visit the pre-Inca burial ground of Sillustani. You will have time to wander through the remarkable tombs built from volcanic stone. Known as Chullpas, these funerary towers reach heights of up to 12 metres. Overlooking the beautiful Lake Umayo, Sillustani is considered to be one of the most important necropolises in the world. On completion of the tour you will be taken to your hotel.



DAY 10: Puno

Puno lies on the shores of Lake Titicaca, the highest navigable lake in the world. It is the largest city in the Southern Altiplano and an important agricultural and livestock (llamas and alpaca) region. It sits at an altitude of over 3,800 metres and is a picturesque hillside city and a melting pot of the Aymara and Quechua culture.



TRIP CODE

LATSSAB5

DEPARTURE

Daily

DURATION

27 Days

LOCATIONS

Argentina, Brazil, Peru, Machu Picchu, Amazon, Galapagos Islands



SOUTH AMERICA - SOUTH AMERICA 'BIG FIVE' EXPLORER

DAY 11: Titicaca Uncover by Speed Boat

Early this morning you will be collected from your hotel and transferred to the port to board a fully equipped speedboat with on board service to visit various islands on Lake Titicaca. First stop is Taquile Island where you will explore a scenic and less touristy area. Enjoy time on a pristine sandy beach to relax and feel the serenity of Lake Titicaca. We then hike along a pre-Inca trail with spectacular landscapes of the island, visiting families of weavers to learn about their textile art and symbolism. In 2005, "Taquile and its Textile Art" were proclaimed "Masterpieces of the Oral and Intangible Heritage of Humanity" by UNESCO. After three hours on Taquile, board the speedboat for a short journey to the community of Santa Maria-Llachon, on the tip of the Capachica Peninsula. This is a picturesque off the beaten track destination. We are welcomed by the small Quechua speaking community and introduced to an intensive cultural experience, observing the traditions of the community and participating in an ancient ceremony to learn about their magical world. Experience the preparation of "Pachamanca", a traditional way of cooking meat, fish and potatoes using underground ovens, and one of the main dishes of Peruvian cuisine. Enjoy these delicacies in a small, but scenic restaurant (included in tour price). For the more adventurous there is an optional kayak along the coast of Llachon. After lunch we leave Santa Maria and arrive at a remote area of the National Reserve of Lake Titicaca to explore Uros Ccapi. These are considered to be the last authentic floating islands, less commercial and little visited. The Uros are descendants of one of the oldest cultures in South America. There are optional tours in reed boats before we depart back to Puno. On arrival at the port, you will be transferred to your hotel. Please note this is small group tour. Please note there is a minimum number of passengers requested to operate this tour from December to March, if the required number of passengers is not reached we will offer you a similar alternative. Please also note that between the months of January and March the ceremony of "Pachamama" will be subject to weather conditions.



TRIP CODE

LATSSAB5

DEPARTURE

Daily

DURATION

27 Days

LOCATIONS

Argentina, Brazil, Peru, Machu Picchu, Amazon, Galapagos Islands



SOUTH AMERICA - SOUTH AMERICA 'BIG FIVE' EXPLORER

DAY 12: Transfer from Puno hotel to bus or train station

This morning, you will be collected from your hotel and transferred to either the bus or train station for your journey from Puno to Cusco.



DAY 12: Puno to Cusco

The spectacular journey from Puno to Cusco takes you across the Altiplano and you will travel accompanied by an English-speaking guide. The drive takes you through sleepy Andean villages and past spectacular snowcapped mountains, sheer cliffs and rampaging rivers. Stops along the way include the atmospheric towns of Pucara and Andahuaylillas and the pre-Inca ruin of Raqchi. Lunch is included and you will arrive in the famous city of Cusco in the early evening. The journey will take approximately 10 hours.



DAY 12: Arrival transfer in Cusco

On arrival at Cusco bus or train station, you will be met by a representative who will be holding a sign with your name on it, to transfer you to your hotel.



DAY 12: Cusco

Cusco, set at an altitude of 3,400 metres in the Peruvian Andes, was once the capital of the Inca Empire. It is known for its Spanish colonial architecture and Incan remains. Narrow, cobblestoned streets lined by Inca walls stretch out from the main plaza in every direction. Many of the colonial buildings were built on top of Incan foundations and the stonework is unparalleled in its precision and beauty.



TRIP CODE

LATSSAB5

DEPARTURE

Daily

DURATION

27 Days

LOCATIONS

Argentina, Brazil, Peru, Machu Picchu, Amazon, Galapagos Islands



SOUTH AMERICA - SOUTH AMERICA 'BIG FIVE' EXPLORER

DAY 13: Cusco - City Tour

You will be collected from your hotel for a sightseeing tour through Cusco, the heart of the Inca Empire. Visit the fascinating Qorikancha Temple of the Sun, the 12-Angled Rock and the Cathedral, built on the ruins of an Inca Palace. From here head to the archaeological remains located around the city, including the fortress of Sacsayhuaman, Qenko (giant rock), the ancient site of Puca Pucara and finally the Water Temple of Tambomachay. On completion of your tour, you will be taken to your hotel. Included in your tour price is the BTG (Tourist Ticket of Cusco). Please note this is a small group tour.



DAY 14: Ollantaytambo to Aguas Calientes

Travel from Ollantaytambo to Machu Picchu in this comfortable train, and let your feet have rest. Enjoy an authentic Andean experience, while relaxing in modern and comfortable interior design illuminated by Latin American music. Comfortable seats with tables in front to share the journey with friends. *Due to limited space for luggage storage on trains, luggage restrictions apply: one bag or backpack (carry-on luggage) with a maximum weight of 5.0 kg/11 lb, measuring no more than 62 linear inches/157 linear cm (height + length + width)



TRIP CODE

LATSSAB5

DEPARTURE

Daily

DURATION

27 Days

LOCATIONS

Argentina, Brazil, Peru, Machu Picchu, Amazon, Galapagos Islands



SOUTH AMERICA - SOUTH AMERICA 'BIG FIVE' EXPLORER

DAY 14: Sacred Valley Full Day Tour

This morning you will be collected from your hotel for your full day exploration of the Sacred Valley of the Incas. This fertile river valley was home to many important sites for the Incas, both strategic and religious. The first stop is the village of Pisac, with its famous market. The colonial village of Pisac sits at the base of the spectacular Pisac Ruins – a hilltop Inca citadel and fortress with impressive agricultural terracing. On market days Pisac comes alive with locals from nearby hillside villages in traditional dress selling local fruit and vegetables as well as handicrafts. There is free time to wander the colourful market stalls before a typical Andean lunch at a local restaurant. Continue your journey along the River Urubamba, to Ollantaytambo. The town, which is dominated by a giant Inca fortress, is perhaps the best surviving example of Inca town planning and was the scene of a rare Inca victory over the invading Spanish. At the end of the tour you will be transferred to the train station in Ollantaytambo to take the train to Aguas Calientes. Lunch is included. Included in your tour price is the BTG (Tourist Ticket of Cusco) which allows you entrance into 16 attractions around Cusco in ten days. Please note this is a small group tour.



TRIP CODE

LATSSAB5

DEPARTURE

Daily

DURATION

27 Days

LOCATIONS

Argentina, Brazil, Peru, Machu Picchu, Amazon, Galapagos Islands



SOUTH AMERICA - SOUTH AMERICA 'BIG FIVE' EXPLORER

DAY 15: Machu Picchu Guided Tour

Machu Picchu is a 15th century Inca site, located 2,430 metres above sea level on a mountain ridge above the Sacred Valley. It is the most famous of all Inca sites, but it was not until 1911 that it was brought to the world's attention by the American historian Hiram Bingham. The Incas abandoned the city just prior to Spanish colonisation, the city was never pillaged and as a result the ruins are still in fantastic condition. With its location on a dramatic ridgeline surrounded by sheer cliffs and the Urubamba River on three sides, the city of Machu Picchu is a remarkable place to visit. Machu Picchu was declared a UNESCO World Heritage Site in 1983 and in 2007 it was voted one of the new Seven Wonders of the World. The tour starts with a bus ride from Aguas Calientes to Machu Picchu. You will be astonished at your first view of Machu Picchu, a stunning display of ancient architecture with incredible surroundings. Enjoy a guided shared tour of the ruins. The shared tours will generally take circuit 1 which is the high/short route. You will explore the upper platforms of the site, where you can enjoy a panoramic view over the ruins. You will visit the Guardian's hut and then continue to the Puente del Inca (Incan Gate) and the urban sector of the citadel. Take the path on to the quarry and head on to the Casa Del Inca, Hall of Mirrors and Temple of the Condor. Return by bus to Aguas Calientes village. Please note that shared tours run with a maximum of 8 guests and 1 local expert guide. Please be aware that your tour of Machu Picchu does not include an entry permit to Huayna Picchu (the iconic hill behind the Machu Picchu ruins). If you want to climb Huayna Picchu then you need to pre-book your permit with at least 3 months in advance. Please contact your travel specialist if you would like to do this.



TRIP CODE

LATSSAB5

DEPARTURE

Daily

DURATION

27 Days

LOCATIONS

Argentina, Brazil, Peru, Machu Picchu, Amazon, Galapagos Islands



DAY 15: 360 Machu Picchu Train: Mapi - Ollanta PM

This afternoon travel by train from Aguas Calientes to Ollantaytambo. *Due to limited space for luggage storage on trains, luggage restrictions apply: one bag or backpack (carry-on luggage) with a maximum weight of 5.0 kg/11 lb, measuring no more than 62 linear inches/157 linear cm (height + length + width)



SOUTH AMERICA - SOUTH AMERICA 'BIG FIVE' EXPLORER

DAY 15: Private Transfer Ollantaytambo - Cusco

Transfer from Ollantaytambo train station in the Sacred Valley to Cusco.



DAY 16: Transfer to the airport for onward destination

You will be collected from your hotel at the appropriate time and transferred to the airport for your onward flight.



DAY 16: Puerto Maldonado - Refugio Amazonas

On arrival at Puerto Maldonado Airport, you will be met by a representative of Refugio Amazonas to begin the journey to Refugio. Enroute we will stop at the local office so that you can repack your luggage and only take what is required for the next four days. The rest will be stored securely in the office. Continue by road and a two and a half hour boat journey to Refugio Amazonas, located in a 200-hectare private reserve. The boat ride from the Tambopata River Port to Refugio Amazonas takes us past the Infierno Community and the Tambopata National Reserve checkpoint and into the buffer zone of this 1.3 million hectare conservation unit. A boxed lunch is provided to eat along the way. On arrival to the lodge, you will be welcomed and given a brief orientation. After dinner at the lodge there is the option to join a night walk when most of the animals are active but sometimes difficult to see. The frogs are easier to see with their fascinating shapes and colours and fascinating sounds. Note: Please ensure your arrival flight is no later than 13:05



TRIP CODE

LATSSAB5

DEPARTURE

Daily

DURATION

27 Days

LOCATIONS

Argentina, Brazil, Peru, Machu Picchu, Amazon, Galapagos Islands



SOUTH AMERICA - SOUTH AMERICA 'BIG FIVE' EXPLORER

DAY 17: Refugio Amazonas

Refugio Amazonas have a set of activities where you can choose from onsite, allowing you to create your own personalised experience deep in the Amazon. Below are suggested options you may like to choose from through-out your stay. After breakfast venture out onto the lake by canoe or catamaran, looking for wildlife such as hoatzin, caiman, horned screamers, macaws and otters that are sometimes seen in the area. Back on land, a 30 minute walk from the lodge takes you to the 25 metre scaffolding canopy tower, complete with staircase running through the middle and providing safe access to the platforms above. The tower has been built on high ground to give views of the primary rainforest extending out towards the Tambopata National Reserve. Enjoy excellent views across the canopy and look for toucans, macaws and raptors. After lunch you will visit a farm to learn about local agriculture and Amazonian crops before an ethnobotanical tour to learn about the medicinal uses of the various plants and trees of the region. In the evening, Refugio Amazonas staff offer lectures covering topics such as conservation threats, opportunities and projects in the Tambopata National Reserve.



DAY 18: Refugio Amazonas

Refugio Amazonas have a set of activities where you can choose from onsite, allowing you to create your own personalised experience deep in the Amazon. Below are suggested options you may like to choose from through-out your stay. Witness the audio and visual spectacle of a clay lick, watching vibrant coloured macaws, parrots and parakeets feast on clay. Species such as dusky-headed and cobalt-winged parakeets are often seen and with luck we may also see mealy and yellow-crowned Amazons, blue-headed pionus, severe macaw and orange-cheeked (Barraband`s) parrots. After lunch, take a short hike from the lodge brings us to a beautiful Brazil nut forest that has been harvested for decades. Here you can learn about the whole process of the rainforest's only sustainably harvested product, from collection through transportation to drying. In the afternoon, there will be a visit to a peccary clay lick, this time to see mammals. Wild rain forest pigs show up in herds of up to twenty to eat clay, alongside deer, guan and parakeets.



TRIP CODE

LATSSAB5

DEPARTURE

Daily

DURATION

27 Days

LOCATIONS

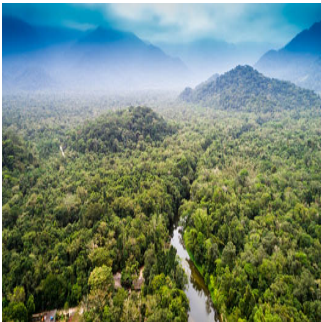
Argentina, Brazil, Peru, Machu Picchu, Amazon, Galapagos Islands



SOUTH AMERICA - SOUTH AMERICA 'BIG FIVE' EXPLORER

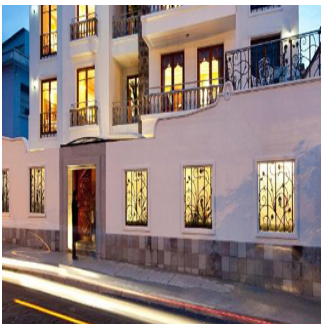
DAY 19: Refugio Amazonas – Puerto Maldonado

After breakfast, return to Puerto Maldonado for your departure flight. Depending on airline schedules, this may require a dawn departure. Please note: Depending on airline schedules, this may require a dawn departure. We recommend flight LA2074 departing at 13:35 *Schedule of activities are subject to change without notice



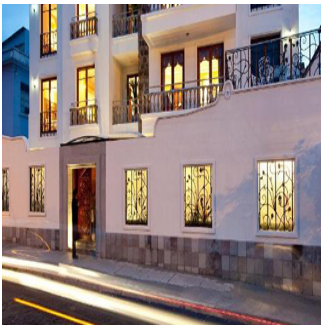
DAY 20: Transfer to the airport for onward destination

You will be collected from your hotel at the appropriate time and transferred to the airport for your onward flight.



DAY 20: Arrival transfer in Quito

On arrival, please make your way through to the Arrivals Hall where our representative will be waiting for you to transfer you to your hotel. This service includes a driver and local English speaking guide, who will provide you with any useful information needed for your stay. He/she will be holding a sign with your name on it. Should you not be able to locate them, please refer to the front of your itinerary for emergency contact details of our representative office.



DAY 20: Quito

Sitting at 2,850 metres above sea level high in the Andean foothills lies Quito, the capital of Ecuador. The city, a short distance from the Equator and with an amazing backdrop of snow-capped mountains, is known for its stunning colonial architecture and art-work. Founded in the 16th century on the ruins of an Inca city, Quito has one of the largest, least-altered and best-preserved historic centres in the Americas. It was declared a UNESCO World Cultural Heritage Site in 1978.



TRIP CODE

LATSSAB5

DEPARTURE

Daily

DURATION

27 Days

LOCATIONS

Argentina, Brazil, Peru, Machu Picchu, Amazon, Galapagos Islands



SOUTH AMERICA - SOUTH AMERICA 'BIG FIVE' EXPLORER

DAY 21: Quito - City Tour and the Equator

This morning you will be collected from your hotel to commence a colonial city tour of Quito exploring the bustling streets and squares of the largest historical old town in the Americas. Visit some of its most important churches such as the majestic La Compañía and iconic San Francisco which have stunning multi-ethnic designs and cultural heritage. We then travel by road to the Equatorial Monument, 25km (16 miles) north of Quito, which marks the exact middle of the World, Latitude 0°, where you can stand with a foot on each hemisphere. A certificate for having crossed the Equator is issued to each guest. The surrounding, volcanic scenery is stunning and you can choose to either visit the Ethnographic Museum or the Inti Ñan Museum, both located near the site of the monument. On completion of the tour, you will be returned to your hotel. Please note this is a private tour that includes a local English speaking guide.



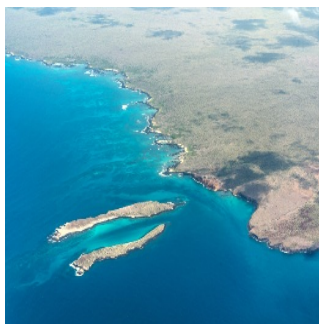
DAY 22: Transfer to the airport for onward destination

You will be collected from your hotel at the appropriate time and transferred to the airport for your onward flight.



DAY 22: Sunday, Embark & Cerro Dragón

Upon arrival at Isla Baltra in the Galapagos Islands, you will meet your guide to transfer to, and embark upon, the M/Y Galapagos Sea Star Journey. In the afternoon, visit Cerro Dragón, Dragon Hill, upon which you are afforded beautiful views of the bay. Take a trail to a hyper-saline lagoon situated behind a beach, where you can find flamingos and pintail ducks amongst other shorebirds. There is also a population of re-introduced land iguanas.



TRIP CODE

LATSSAB5

DEPARTURE

Daily

DURATION

27 Days

LOCATIONS

Argentina, Brazil, Peru, Machu Picchu, Amazon, Galapagos Islands



SOUTH AMERICA - SOUTH AMERICA 'BIG FIVE' EXPLORER

DAY 23: Monday, Black Turtle Cove & Chinese Hat

With an absence of bays, take a kayak or panga to the northern side of Santa Cruz for Black Turtle Cove. The calm waters are frequented by sea turtles that can often be seen mating. The area is also ideal for young sharks and rays that can easily be seen in the clear waters. Continue to the small islet of Chinese Hat, so-called for its distinctive shape. The recent volcanic cone shows lava formations on one side with lava tubes and flows all covered by sea lions, marine iguanas and Galapagos penguins.



DAY 24: Tuesday, Isla Genovesa

A great island for birdwatchers, Isla Genovesa, is in the north of the Galapagos Islands. Make a wet landing on the white sand of Darwin Bay. Take a trail towards a cliff edge, observing red-foots in the trees below, as well as sighting sharp-beaked finches, ground finches and swallow-tailed gulls. At the end of the trail, take in spectacular views of the island. Make your way south to the southern part of Darwin Bay to El Barranco, Prince Philip's Steps. Climb up to find large populations of red-footed and masked boobies as well as storm petrels and short-eared owls.



DAY 25: Wednesday, Isla Bartolomé & Sullivan Bay

Visit the stunning beaches of Isla Bartolomé, home to marine turtles and a small colony of Galapagos penguins. Enjoy excellent views from this small volcanic island, also featuring the famous Pinnacle Rock. Continue to Sullivan Bay on Isla Santiago. The island is volcanically active with some recently formed cones and flows to be seen. You can walk across the lava that looks as if it has only just formed at Sullivan Bay.



DAY 26: Thursday, Isla Santa Cruz & Disembark

Head towards the Highlands of Isla Santa Cruz. Up on the trail, on a clear day you will have great views of rolling hills and volcanic cones covered with lush greenery. Transfer to Baltra Airport for your return flight to the mainland.



TRIP CODE

LATSSAB5

DEPARTURE

Daily

DURATION

27 Days

LOCATIONS

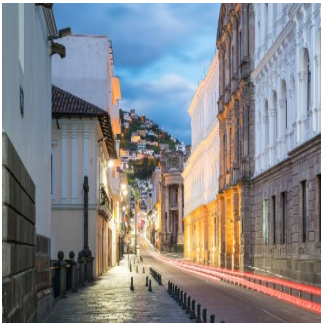
Argentina, Brazil, Peru, Machu Picchu, Amazon, Galapagos Islands



SOUTH AMERICA - SOUTH AMERICA 'BIG FIVE' EXPLORER

DAY 26: Arrive Quito

This evening stay at Wyndham Quito Airport Hotel which is connected by a walkway to the terminal. Remainder of the day at leisure.



DAY 27: Depart Quito

Please make your way to the terminal for your departure flight. Please note check in time is 3 hours prior to scheduled departure time.



TRIP CODE

LATSSAB5

DEPARTURE

Daily

DURATION

27 Days

LOCATIONS

Argentina, Brazil, Peru, Machu Picchu, Amazon, Galapagos Islands



INCLUSIONS & DETAILS

Accommodation	Hotels, lodge in the Amazon and cabin on the Galapagos ship.
Inclusions	<p>Airport transfers Internal flights Accommodation with breakfast All inclusive accommodation in the Amazon and Galapagos Cruise Tours as stated in the itinerary Other meals where stated</p> <p>EXCLUSIONS: Galapagos National Park Entrance Fee (US\$100 per person) Galapagos Transit Control Card (US\$20 per person) Tips, personal expenses Alcoholic beverages in Amazon Lodge International flights Visas</p>
Difficulty Rating	3 Light Adventure (High altitude in some areas)

SOUTH AMERICA - SOUTH AMERICA 'BIG FIVE' EXPLORER

Single Surcharge	Available on request. Contact us for more details.
Notes	All entrance fees are subject to change without prior notice. This is a Tailor-Made itinerary which can be customised to create your own unique journey. Contact us to discuss your travel plans.
Price Dependent upon	Season and availability.

SUSTAINABILITY

Being environmentally accountable is a crucial part of our organisation. Chimu is currently striving towards using less paper, taking several initiatives to do so and tracking our progress along the way. Our goal: A paperless organisation. For this reason, all information given to you will be sent electronically. We encourage those who choose to travel with us to support our aspirations and actions and ask that you reconsider printing out documentation. To view these documents, you can download them to your iPad or portable computer before and during your trip.

Chimu is passionate and dedicated to sustainability measures and understands the crucial part sustainability plays within the tourism industry.

We use local guides and office staff to both maximise local employment opportunities and minimise carbon footprint. Local guides also ensure you benefit from the intimate knowledge, passion and culture of the country you're visiting. Our guides are all highly qualified (most with university degrees) or equip with many years of experience and are paid above the standard wage. Whether it be our knowledgeable local guides, locally produced meals or the transport on tour, we do not use imported goods when local products are available. We aim to minimise our impact on the environment and give as much back as possible to the communities we work in.

On this trip you will stay at the eco-friendly lodge Refugio Amazonas, a proud partner of Wired Amazon, a citizen science program. They ensure that travellers have as little impact on the wildlife as possible and minimize disturbance and also encourage the education and visitation of protection and conservation services, specifically associate with the Amazon. While visiting the many national parks, heritage sites, museums and landmarks our travellers are encouraged to explore whilst remaining culturally aware and sensitive. We further encourage you to buy appropriate souvenirs and discourage the buying of anything wrongfully made or taken from the environment i.e. shells and endangered species products. Information on how you can be environmentally conscious, and travel responsibly will be made available in our Travellers Guides and provided during your travels by guides and staff.

For more information on our sustainability policies, including how we are striving towards being a paperless organisation, click [HERE](#)

TRIP CODE

LATSSAB5

DEPARTURE

Daily

DURATION

27 Days

LOCATIONS

Argentina, Brazil, Peru, Machu Picchu, Amazon, Galapagos Islands

