

SOUTH AMERICA - PERU AMAZON EXTENSION | REFUGIO AMAZONAS



INTRODUCTION

This one-of-a-kind itinerary allows you to experience the best of the Amazon in style while minimizing your ecological footprint.

Lying deep within the Peruvian rainforest, Refugio Amazonas is a pocket of luxury in this vast wilderness. Nature-lovers are invited to step into a world of jungle activities and get involved in the Citizen Science programme, Wired Amazon. Secluded, intimate and luxurious. Refugio Amazonas is a 32-bedroom jungle lodge set within a 200-hectare private reserve within the buffer zone of the Tambopata National Reserve. Approximately four hours from Puerto Maldonado airport in the southeast of Peru, the lodge offers a huge variety of child-friendly adventures with a focus on conservation and science so is the perfect retreat for travellers of all ages. **Choose from a range of stays from 2 nights or more. Contact us for details.**

The Rainforest Expeditions Experience

Rainforest Expeditions has three properties nestled in the Peruvian Amazon. The extensive list of expeditions offer immersion in nature and local culture exchange aimed at providing a comprehensive experience of the rainforest. By staying at one of these three properties, you can make a meaningful contribution to sustainable efforts in preserving and protecting pristine land, wildlife populations and locals. Guests benefit from knowledgeable guides who provide an in-depth understanding of life in the rainforest of Tambopata. Enjoy an open wall facing the rainforest and awake with the sounds of jungle. Properties include Refugio Amazonas, Posada Amazonas & Tambopata Research Centre.

Highlights include:

Clay Licks 🦜 Take a boat trip to the Chuncho Clay Lick inside the Tambopata National Reserve to see macaws descend to the clay lick on clear mornings.

TRIP CODE

PETSRO4

DURATION

4 Days

LOCATIONS

Peru, Amazon



SOUTH AMERICA - PERU AMAZON EXTENSION | REFUGIO AMAZONAS

Canopy Tower - A 30-metre scaffolding canopy tower gives you spectacular views of the vast expanses of standing forest with a good chance of spotting toucans, parrots, macaws or mixed species canopy flocks.

Life in the Rainforest - Visit a working jungle farm and a real Brazil nut concession to learn about the way of life in the rainforest. You will taste exotic tropical fruits and discover medicinal plants from the neighbouring local families that we are helping integrate into the ecotourism industry.

Lake - Paddle around the Lake Condénado on a catamaran, looking for wildlife such as hoatzin, caiman, or horned screamers.

Wired Amazon Science Lab - Hang out with resident biologists as they peer through a stereoscope to properly identify insect specimens before mounting them and sending them off to the University of Guelph for genetic sequencing.

Children's Rainforest Trail - The Amazon's only trail for children and a playground beside the lodge.

Wellness Centre - Enjoy massages and aromatherapy at our wellness center.

**Refugio Amazonas provides special activities for kids and teenagers, such as seed hunting, natural dye tattoos, drone exploration, and storytelling around the campfire. Ask for the family program to enhance your jungle experience with your loved ones!*

On this all-encompassing personalised itinerary, Chimu will provide travel logistics for your travel party for the duration of your journey, plus expert guides for all the major sightseeing as per itinerary. Each night you will stay in superior accommodation, handpicked by our experienced team for their creature comforts, convenient locations, and impeccable service

GREEN POINTS!

☑ In partnership with the locals! 75% of the profits from this amazing lodge goes directly to the local community.

☑ Citizen science projects offer travellers the opportunity to help the Refugio identify and protect new species.

☑ Refugio Amazonas runs one of the most important scientific projects to save the Macaw population a study that is hoped to assist populations all over Latin America.

You can also check out our alternate lodge the [Inkaterra Reserva Amazonica](#) Extension.

Please [contact us](#) for more information.

TRIP CODE

PETSRO4

DURATION

4 Days

LOCATIONS

Peru, Amazon



ITINERARY

SOUTH AMERICA - PERU AMAZON EXTENSION | REFUGIO AMAZONAS

DAY 1: Arrival to Refugio Amazonas

To begin your rainforest adventure, you will take a quick flight from Lima or Cuzco to the Amazonian city of Puerto Maldonado, in Southeastern Peru. Upon arrival at Puerto Maldonado Airport, a Refugio Amazonas representative will greet you and accompany you on the journey to the lodge. You will be taken on a one-hour road trip, followed by a tranquil 1-hour boat trip on the Tambopata River, to arrive at Refugio Amazonas. During the trip, there will be a stop at the local office where you can repack your luggage, bringing only necessary items for the next four days. The remaining belongings will be securely stored at the office. Upon reaching the lodge, you will be warmly welcomed and given a brief orientation. After dinner, you have the option to participate in a night walk, where you can observe the animals that are active during the evening, but often difficult to spot. The nocturnal frogs, with their captivating shapes and colors, as well as interesting sounds, can be seen more easily. Note: Please ensure that your flight arrives in Puerto Maldonado before 12:30pm. *Refugio Amazonas offers a variety of on-site activities and excursions that can be customized. The itinerary presented below is provided as an example and may be subject to changes depending on weather, availability, or your personal preferences.



TRIP CODE

PETSR04

DURATION

4 Days

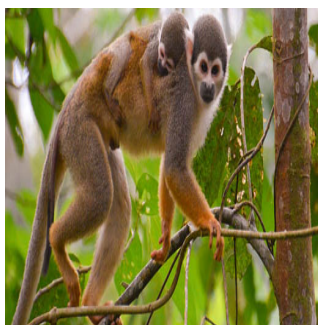
LOCATIONS

Peru, Amazon



DAY 2: Amazon Exploration

After breakfast, you'll have the opportunity to explore the Condénado lake's wildlife from a canoe or catamaran, where you can spot exotic creatures like hoatzin, caiman, horned screamers, macaws, and rare otters. Later, you'll embark on a thirty-minute walk from the lodge to a 25-meter canopy tower with a staircase, offering stunning views of toucans, macaws, and raptors from the treetops. After lunch, you'll visit a local farm to learn about Amazonian crops and local agriculture. An ethnobotanical tour will follow, where you'll gain insights into the medicinal practices of the region. In the evening, Refugio staff will offer engaging lectures that cover conservation challenges, opportunities, and projects in the Tambopata National Reserve.



SOUTH AMERICA - PERU AMAZON EXTENSION | REFUGIO AMAZONAS

DAY 3: Amazon Exploration

Experience the magnificent audio and visual spectacle of a clay lick, where you'll witness vibrant-colored macaws, parrots, and parakeets feast on clay. Species such as dusky-headed and cobalt-winged parakeets are frequently seen, and with some luck, you may also spot mealy and yellow-crowned Amazons, blue-headed pionus, severe macaw, and orange-cheeked (Barraband's) parrots. After lunch, you'll embark on a brief hike from the lodge to a stunning Brazil nut forest, which has been sustainably harvested for decades. Here, you'll learn about the entire process of collecting, transporting, and drying the rainforest's only sustainable product. In the afternoon, the medicinal plants' trail will take you on a journey to explore the vast array of plants and trees that the local population has used for centuries to heal their bodies and minds. You may recognize some of the names, such as Sacha-Ajos, Uña De Gato, Sacha-Charcot, Para-Para, Ayahuasca, among others.



TRIP CODE

PETSRO4

DURATION

4 Days

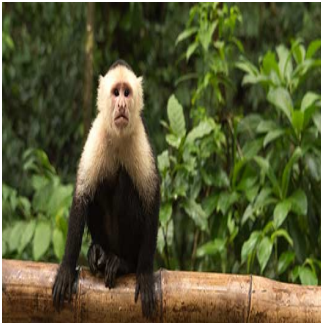
LOCATIONS

Peru, Amazon



DAY 4: Depart Refugio Amazonas

After breakfast, you will embark on a two-hour journey back to Puerto Maldonado for your departure flight. The trip includes a 1-hour boat ride followed by a 1-hour road transfer to Puerto Maldonado. This provides a final opportunity to immerse yourself in the breathtaking natural scenery of the Tambopata National Reserve, offering a chance to spot a variety of wildlife along the way. Please note: Departure from the lodge is at 8am and arrival in Puerto Maldonado around 10am. Departing flights must be booked after 11am to allow sufficient time for your transfer to the airport.




INCLUSIONS & DETAILS

Accommodation	Jungle Lodge
---------------	--------------

SOUTH AMERICA - PERU AMAZON EXTENSION | REFUGIO AMAZONAS

Inclusions	Inclusions Accommodation with full meals All tours, activity services and guides Return transfers from Puerto Maldonado Airport All river transportation Entrance fee to National Park
	Exclusions: International and internal flights not indicated Visa and reciprocity fees (if applicable) Travel Insurance Beverages Personal expenses Gratuities for tour guides/drivers Any items not mentioned as included
Difficulty Rating	2 (light adventure - average fitness required)
Single Surcharge	A single supplement surcharge applies and is subject to availability. Please contact us for more information.
Notes	Prices are based on per person, twin share. Prices are correct at time of publishing but are subject to change at any time. All entrance fees are subject to change without prior notice. Please note the Refugio Amazonas is closed Jan-Mar 2023 and Jan-Mar 2024 - this is due to maintenance on the lodge during rainy season.
Price Dependent upon	Seasonality and availability at time of booking.

TRIP CODE
PETSRO4
DURATION
4 Days
LOCATIONS
Peru, Amazon


SUSTAINABILITY

Being environmentally accountable is a crucial part of our organisation. Chimu is currently striving towards using less paper, taking several initiatives to do so and tracking our progress along the way. Our goal: A paperless organisation. For this reason, all information given to you will be sent electronically. We encourage those who choose to travel with us to support our aspirations and actions and ask that you reconsider printing out documentation. To view these documents, you can download them to your iPad or portable computer before and during your trip.

Chimu is passionate and dedicated to sustainability measures and understands the crucial part sustainability plays within the tourism industry.

We use local guides and office staff to both maximise local employment opportunities and minimise carbon footprint. Local guides also ensure you benefit from the intimate knowledge, passion and culture of the country you're visiting. Our guides are all highly qualified (most with university degrees) or equip with many years of experience and are paid above the standard wage. Whether it be our knowledgeable local guides, locally

SOUTH AMERICA - PERU AMAZON EXTENSION | REFUGIO AMAZONAS

produced meals or the transport on tour, we do not use imported goods when local products are available. We aim to minimise our impact on the environment and give as much back as possible to the communities we work in.

While visiting the many national parks, heritage sites, museums and landmarks our travellers are encouraged to explore whilst remaining culturally aware and sensitive. We further encourage you to buy appropriate souvenirs and discourage the buying of anything wrongfully made or taken from the environment i.e. shells and endangered species products. Information on how you can be environmentally conscious, and travel responsibly will be made available in our Travellers Guides and provided during your travels by guides and staff.

For more information on our sustainability policies, including how we are striving towards being a paperless organisation, click [HERE](#)

TRIP CODE

PETSRO4

DURATION

4 Days

LOCATIONS

Peru, Amazon

