

BRAZIL - SIGNATURE RIO TO BUENOS AIRES



INTRODUCTION

This nine-day superior styled itinerary gives you the best of Rio de Janeiro and Buenos Aires, two of South America's most vibrant cities.

Your handpicked journey starts in the vibrant city of Rio de Janeiro where you will start this memorable journey relaxing on some of the world's best-known beaches. See the famous Sugarloaf Mountain, Christ the Redeemer Statue, learn about the city's history and visit the neighbourhood of Santa Teresa where some of the cities best photo opportunities present themselves with the city below and surrounding favelas.

Break up your city stays with a visit to one of the seven Natural Wonders of the World; Iguazu falls. Find out why these waterfalls are considered to be among some of the largest waterfalls on Earth, experiencing the force and volume of water cascading over 270 vertical drops from both the Argentinian and Brazillian sides.

Finish off in South America's very own 'Paris of the South'; Buenos Aires. We have carefully handpicked customised itineraries that showcase the city's European elegance and Latin energy. Take a tour to delve into the city's history, visiting the neighbourhoods of San Telmo. La Boca, Palermo and Recoleta, then end the day with an intimate Asado dining experience. Witness Argentinian bbq techniques up close as you sit with the chefs around the *parrilla*, accompanied with a wine pairing menu featuring some of the best boutique wines from Argentina. The following evening is your chance to experience what makes Buenos Aires world-famous, a traditional tango show with dinner.

This itinerary is also offered in reverse - [Signature Buenos Aires to Rio](#)

Pricing and availability is subject to change and offer and may be withdrawn or varied at any time. Please [contact us](#) for the latest availability.

ITINERARY

TRIP CODE

MCAHRBA

DEPARTURE

Daily

DURATION

9 Days

LOCATIONS

Brazil, Argentina



BRAZIL - SIGNATURE RIO TO BUENOS AIRES

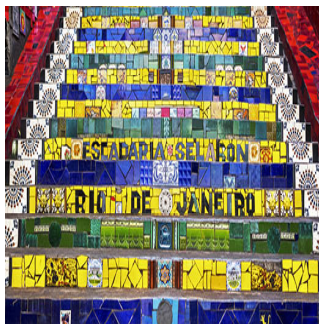
DAY 1: Arrival in Rio de Janeiro

You will arrive in the city of Rio de Janeiro, located on the Baia de Guanabara and the Atlantic Ocean. From the airport you will be transferred to your hotel in Copacabana Beach where you'll stay right on Atlantica Avenue, Rio's most famous beach strip. Today is an arrival day, so you're free to enjoy Copacabana and check out your local surroundings.



DAY 2: Half Day Tour of Santa Teresa & Lapa

Join a discovery tour of Rio de Janeiro that heads to the most beloved neighbourhoods, Santa Teresa and Lapa. The bustling suburb of Lapa is famous for its nightlife, historical monuments, and the Roman-style Acros da Lapa aqueducts. Santa Teresa, which is reached via a charming tram ride over the aqueducts is known for its cobblestone streets, beautiful architecture, charming upper-class residential homes, and stunning views from the hillside overlooking the city. Enjoy a local Brazilian speciality, Acai with your local guide along the way. Finally, a visit to the famous Selaron Staircase. The colourful stairway is covered in mosaic tiles, the work of Chilean born artist Jorge Salarnon. The afternoon is free for you to enjoy the beaches of Rio. (B)



DAY 3: Corcovado & Sugarloaf Tour

With an early start, today you will join a city tour taking in all of Rio's famous sights, including Corcovado, to get up close to the Christ the Redeemer statue. The next stop is Sugar Loaf Mountain, where you will board a cable car to the top of Urca Hill, with spectacular views of Rio's famous beaches, bays, hills, and the city. Enjoy a traditional Brazilian BBQ for lunch and continue exploring more of the city including a visit to the Maracanã Stadium via the famous beaches of Copacabana and Ipanema, a stop at the Sambadrome, the city's historic downtown area, and more. (B,L)



TRIP CODE

MCAHRBA

DEPARTURE

Daily

DURATION

9 Days

LOCATIONS

Brazil, Argentina



BRAZIL - SIGNATURE RIO TO BUENOS AIRES

DAY 4: Rio to Iguazu Falls

A transfer will take you to the airport for your flight to Iguazu. The spectacular Iguazu Falls that straddles the Argentine-Brazil border, is made up of 275 individual waterfalls lining a 2.7km wide horseshoe-shaped gorge. You will have the chance to experience the falls from both the Argentinian and the Brazilian sides, the Brazilian side offering a broader, panoramic view, with the Argentinian side offering a series of walkways that allow you to experience the falls from close range. (B)



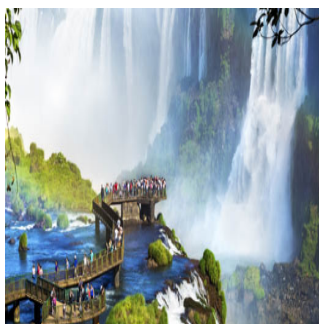
DAY 5: Iguazu Falls

Get ready for a full day of exploring the Argentine side of the falls. We start early to beat the crowds and get the first train to the Devil's Throat. Walk along the paths over the islands which take you to a balcony over the falls and the most spectacular view of the entire Devil's Gorge. You will then have plenty of time to walk the paths on the upper circuit, providing you with a magnificent panoramic view, and the lower circuit, which has great views from below and around the falls. On completion of the tour, you will be taken to your hotel. (B)



DAY 6: Iguazu Falls to Buenos Aires

Today you will cross into Brazil to enjoy a half-day tour of the Brazilian side where you will experience great panoramic views of the Argentinian side of the falls. At the appropriate time, you will be collected from the Brazil National Park and transferred to the airport for your onward flight to Buenos Aires. Buenos Aires, Argentina's elegant, historic and cosmopolitan capital, is known as the "Paris of the South" due to its European atmosphere with glamorous avenues lined with fashionable shops and Parisian-style restaurants and cafes. (B)



TRIP CODE

MCAHRBA

DEPARTURE

Daily

DURATION

9 Days

LOCATIONS

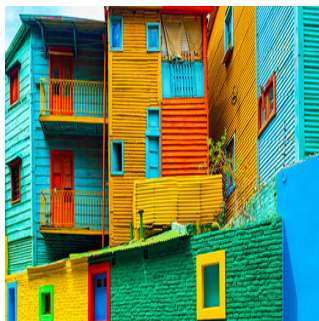
Brazil, Argentina



BRAZIL - SIGNATURE RIO TO BUENOS AIRES

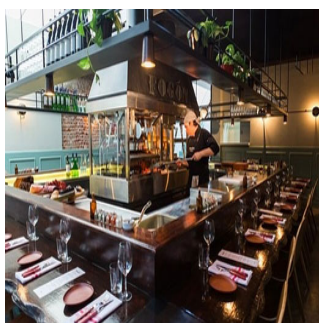
DAY 7: Buenos Aires City Tour

The morning is at leisure before you are collected from your hotel for a three hour afternoon city tour. We have designed this tour exclusively for our guests. You will visit the main square; Plaza De Mayo, home to the famous Casa Rosada and then continue on to the charming suburb of La Boca - the birthplace of Tango where you will have some time to wander the streets. Then head to Recoleta Cemetery, one of the most beautiful in the world. Entrance is included and your guide will point out the graves of famous Argentinian's such as Eva Peron, or Evita. (B).



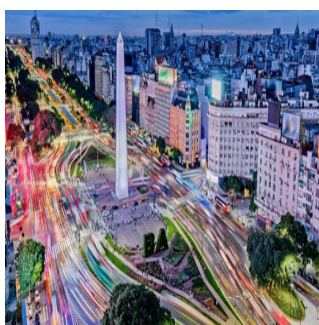
DAY 8: Walking with a Local Tour & Evening Asado Dinner

You will be collected from your hotel in the afternoon for a unique half day walking tour with your own local guide. You will start by exploring the streets of the upscale and exclusive neighbourhood of Recoleta through a local's eyes. Continue on through the beating heart of the city, Retiro, home to many significant government buildings filled with fascinating history of Buenos Aires. Chat with your guide over a local Patagonian Ice Cream or a Coffee, before heading over to the bohemian barrio of San Telmo to explore the local markets, tasting local specialties like Empanada's. You will also visit an old Conventillo and the quaint Plaza Dorrego. In the evening you will be collected from your hotel and transferred to an Asado restaurant where you will enjoy a traditional Argentinian steakhouse. A closed-door dining experience awaits you that explores new ways of serving Argentine Asado classics, along with a wine pairing menu that has also been designed to best enhance the flavours of the ingredients while presenting you with some of the best boutique wines from Argentina. (B,D).



DAY 9: Depart Buenos Aires

Your time in this bustling city comes to an end and you will be transferred from your hotel to your onward flight. If you wish to extend your time in Argentina, check out our Salta or Mendoza extension packages. Or to experience a completely different side of Argentina, head to Patagonia with our El Calafate extension package or our Signature Patagonia package. (B)



TRIP CODE

MCAHRBA

DEPARTURE

Daily

DURATION

9 Days

LOCATIONS

Brazil, Argentina



BRAZIL - SIGNATURE RIO TO BUENOS AIRES

INCLUSIONS & DETAILS

Accommodation	Hotel
Inclusions	<p>Inclusions Private airport transfers Internal flights as part of this itinerary Accommodation with breakfast daily Sightseeing with local English-speaking guide as detailed in itinerary Other meals where stated</p> <p>Exclusions International flights Visa & reciprocity fees (if applicable) Travel insurance Beverages Personal expenses Gratuities for tour guides & drivers Any items not mentioned as included</p>
Difficulty Rating	1 (easy adventure)
Single Surcharge	A single supplement surcharge applies and is subject to availability. Please contact us for more information.
Notes	<p>This itinerary can be done in reverse. Prices are based on per person, twin share. Prices are correct at time of publishing but are subject to change at any time. All entrance fees are subject to change without prior notice.</p>
Price Dependent upon	Seasonality and availability at time of booking.

SUSTAINABILITY

Being environmentally accountable is a crucial part of our organisation. Chimu is currently striving towards using less paper, taking several initiatives to do so, and tracking our progress along the way. Our goal: A paperless organisation. For this reason, all information given to you will be sent electronically. We encourage those who choose to travel with us to support our aspirations and actions and ask that you reconsider printing out documentation. To view these documents, you can download them to your iPad or portable computer before and during your trip.

Chimu is passionate and dedicated to sustainability measures and understands the crucial part sustainability plays within the tourism industry.

TRIP CODE

MCAHRBA

DEPARTURE

Daily

DURATION

9 Days

LOCATIONS

Brazil, Argentina



BRAZIL - SIGNATURE RIO TO BUENOS AIRES

We use local guides and office staff to both maximise local employment opportunities and minimise carbon footprint. Local guides also ensure you benefit from the intimate knowledge, passion, and culture of the country you're visiting. Our guides are all highly qualified (most with university degrees) or equipped with many years of experience and are paid above the standard wage. Whether it be our knowledgeable local guides, locally produced meals, or the transport on tour, we do not use imported goods when local products are available. We aim to minimise our impact on the environment and give as much back as possible to the communities we work in.

While visiting the many national parks, heritage sites, museums, and landmarks, our travellers are encouraged to explore whilst remaining culturally aware and sensitive. We further encourage you to buy appropriate souvenirs and discourage the buying of anything wrongfully made or taken from the environment i.e., shells and endangered species products. Information on how you can be environmentally conscious, and travel responsibly will be made available in our Travellers Guides and provided during your travels by guides and staff.

For more information on our sustainability policies, including how we are striving towards being a paperless organisation, click [HERE](#)

TRIP CODE

MCAHRBA

DEPARTURE

Daily

DURATION

9 Days

LOCATIONS

Brazil, Argentina

