



Chimu The Latin America
and Polar Specialists



Photography Program

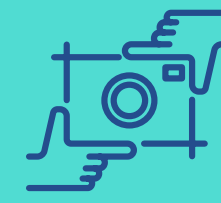
PHOTOGRAPHY PROGRAM

Traveling to Antarctica is the photographic opportunity of a lifetime.

Don't let the unforgettable experience end as you leave Antarctica—take home the best memories by capturing and developing incredible images with our dedicated Antarctic Photography Program.

This program is perfect if you are passionate about photography or want to capture the beautiful landscape and wildlife you will encounter on your incredible Antarctic adventure.

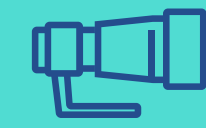
Instead of seeing the workshop program purely as an advanced photography course, consider it a chance to enhance your photographic experiences throughout the excursions and to fast-track your mastery of the craft. This way, you can fully seize the opportunity of a lifetime to capture breathtaking images of Antarctica.



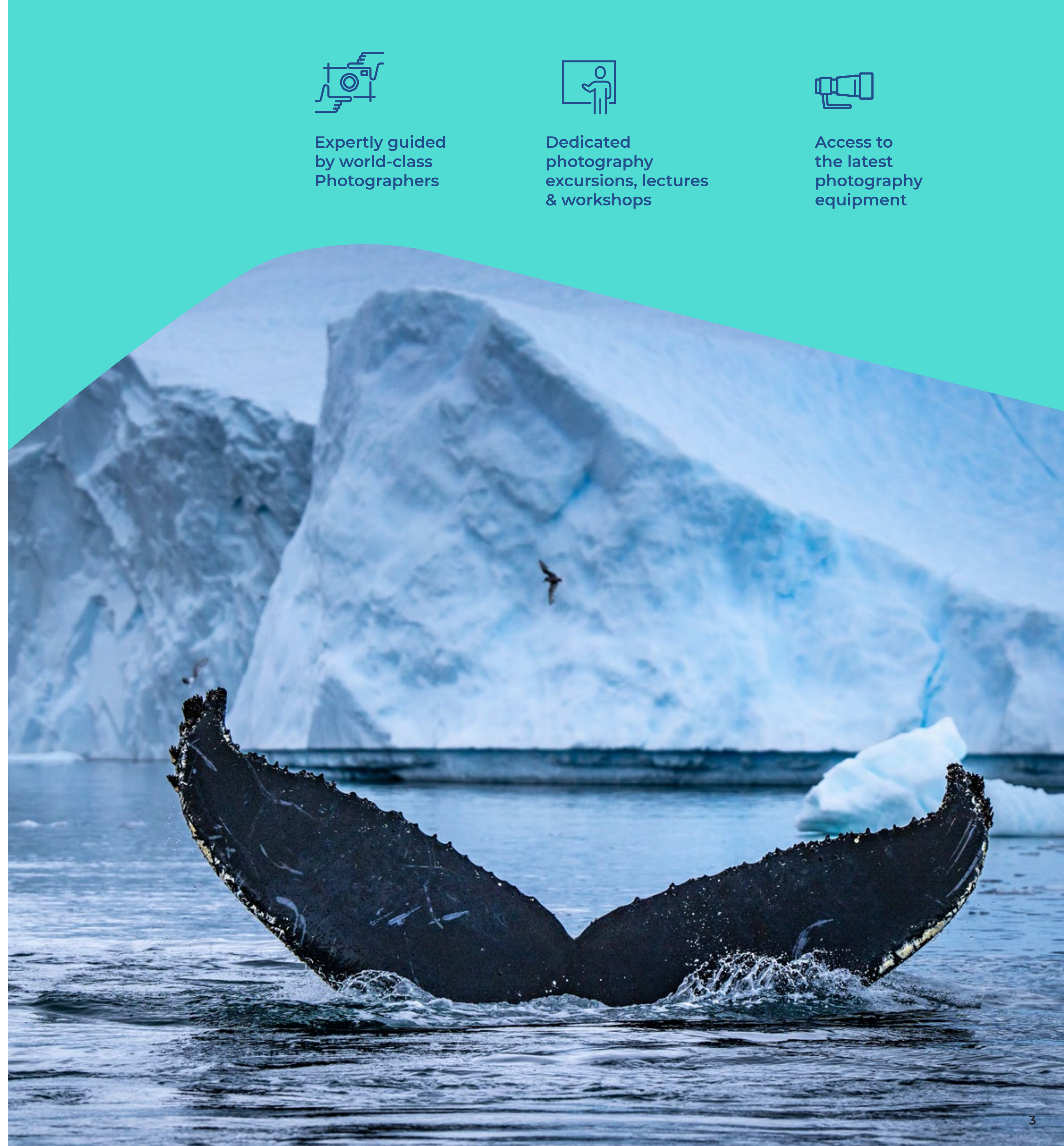
Expertly guided
by world-class
Photographers



Dedicated
photography
excursions, lectures
& workshops



Access to
the latest
photography
equipment



Is the Photography Program for you?

This program offers an opportunity for photography enthusiasts of any skill level to fast-track their learning, gain access to expert advice from our Photography Guides, and make photography a focus of your Antarctic expedition.

We understand that for many—whether seasoned professionals or beginners—traveling to Antarctica is the photographic opportunity of a lifetime.

Whether it's an award-winning penguin image or a perfect iceberg photo that will one day hang on your wall, the Photography Program is designed to give you the guidance, equipment, and opportunity to capture all the incredible images of Antarctica that you hoped for.

By joining our Photography Program, you will also have exclusive excursions with your Photography Guides, which will allow you the space and time to get creative.

Equipment needed

To maximise your learning curve, we encourage photographers to bring their personal cameras, lenses, memory cards, and a laptop or tablet. The ability to transfer images to your computer is important!

Dedicated photography excursions

You will have dedicated Zodiac and photography-guided landings to give you the best possible opportunity to capture amazing images.

Your Polar Photography Guides will accompany you and give tips and tricks for taking that perfect picture. As an exclusive small group, you will be able to capture uninterrupted images of the surroundings and wildlife with ease.

Exclusive photography workshops

Learn more about photography and taking that perfect image in our exclusive photography workshops led by your Polar Photography Guides.

You will learn about creative composition, camera settings and exposure control. The Guides will also offer up some crucial tips and tricks when it comes to Antarctic wildlife and landscape photography.

Secure your place

The Photography Program must be pre-booked as limited spaces are available. Please contact your booking agent to check availability and pricing.

Minimum age

There is no minimum age restriction. However, as this program offers in-depth workshops and lectures, we recommend a minimum age of at least 16.



A TYPICAL DAY

in the Photography Program



05.00 – 06.00 am **Sunrise**

Watch the sunrise on the deck and enjoy capturing beautiful clouds and icebergs passing by—a great way to begin your morning!

07.00 – 08.00 am **Breakfast**

A delicious breakfast is served in the Polaris Restaurant.

09.00 am - 12.30 pm **Join an excursion with your Photography Guides**

Our sturdy Zodiacs will take you ashore after meeting up with your photography group. Enjoy time spent exploring the area, photographing the landscapes and the abundant penguin population. While on shore, your Photography Guides will be available to help with challenging situations such as falling snow, dim light, moving wildlife, and more.

13.00 pm **A tasty lunch awaits you**

Head back to the ship and tuck into a great choice of dishes.

13:45 - 14.30 pm **Time to recharge**

Enjoy a coffee in the Compass Club while editing your photos or socialise while wildlife spotting with the other program participants and your Photography Guides out on deck.



14.45 pm
Afternoon excursion with your Polar Photography Guides

We launch our Zodiacs and take a cruise between icebergs.

The Ocean Endeavour has navigated further down the Antarctic Peninsula and positioned itself close to one of our favorite spots: "Iceberg Alley."

Many of these icebergs, which have calved off the massive ice shelves farther south, drift north in the Bellingshausen Sea, and get stranded in this area during the constant storms.

18.00 pm
Briefing

The Expedition Leader will give a brief recap of the day's events and provide insight into what you can expect to experience tomorrow.

19.00 pm
Polar BBQ dinner on the deck

An excellent meal is a great way to round off the day and share your experiences. As you dine, the Captain sets a course for the location of our next excursion the following day.

21.00 pm
Enjoy the evening

After dinner, there may be a movie screening in the Aurora Lounge or you might prefer to head for a soak in the jacuzzi or retire to the bar and enjoy some time with your Photography Guides and fellow participants to debrief on your day.



"The Antarctic Peninsula is undoubtedly one of the most photogenic regions on Earth. Given it is only very recently that human beings have begun venturing to the frozen continent, the animals here are curious and the landscape is untouched.

Our Photography Program has been designed from the ground up to allow you to make the most of your time in Antarctica photographically, to lean on the expertise of our guides, and utilise their knowledge to ensure you capture the Antarctic in its best light."

Steve Traynor
Expedition Team Manager





SONY

 **Intrepid**

OUR SONY PARTNERSHIP

For most, a voyage to Antarctica is a once-in-a-lifetime opportunity to capture images of one of the least-photographed and last true wildernesses on Earth.

The Sony Partnership has been formed by Chimu's Antarctic operating partner company, Intrepid Travel, allowing all guests on the Ocean Endeavor access to this incredible opportunity.

Through the partnership with Sony Australia, we put industry-leading equipment in your hands. Whether your goal is to change the world through photographs or simply to capture Antarctica in the best light possible, we want to give you the tools and the guidance to do so.

At a sensitive time for our planet's climate, photographs of the Antarctic and its inhabitants can play an important role in shaping the future of the continent.

Intrepid and Chimu believe every Antarctic visitor has the opportunity to document this unique ecosystem and to help tell the story of Antarctica.

SONY





SONY EQUIPMENT

To help you capture Antarctica in the best light possible, we're onboarding an assortment of industry-leading Sony cameras and lenses, including the Alpha 7R IV and Alpha 9, as well as professional-grade wide-angle and telephoto lenses, for you to use throughout your Antarctic voyage.

With an array of equipment to suit all ability levels, this is a core part of our Photography workshops program. It gives you the tools to develop your photography on board and to capture those Antarctic moments just as you see them.

We believe everyone should have an equal opportunity to express themselves in Antarctica and become part of a community of photographers shaping its future.



We have a wide range of Sony camera units and lenses available for your use on loan during the program. Some examples include:

Sony Alpha 9 & Alpha 7R IV

The **Alpha 9** is Sony's first camera aimed at professional action photographers. It is perfect for shooting Antarctic wildlife. Its 24MP, full-frame mirrorless camera can shoot at 20 frames per second with full autofocus.



The **Alpha 7R IV** is a high-resolution full-frame mirrorless camera built around a BSI-CMOS sensor that outputs 60.2MP images. Despite its high resolution, it can shoot up to 10 frames per second with full autofocus and shoot 4K video from its sensor's full width or from an APS-C/Super 35 crop.



100-400mm f/4.5-5.6 G Master



This first-class G Master zoom lens covers a large focal length range of 100 to 400 mm and is ideal for nature photography as you get closer to the wildlife. It offers image quality and AF performance and lets you quickly track and capture even moving objects with outstanding resolution and clarity.

Sony nano-coating suppresses unwanted reflections that can lead to light reflections and ghost effects in difficult shooting situations.

Reduce light reflections, especially when shooting in a bright environment such as Antarctica provides more flexibility for image cut-out and composition.

For a complete list of the Sony equipment provided, please contact your booking agent.



POLAR PHOTOGRAPHY Q&A

What kind of camera should I bring?

All cameras are welcome and catered for in the workshop program - from smartphones to more serious cameras. The photography opportunities become plentiful as soon as we leave port, so we suggest you arrive with at least some experience and familiarity with your camera. It's also a good idea to bring along your camera's manual for quick reference when needing to find new settings and functions.

Do I need to be an advanced photographer to participate?

No! We've designed the program content to cater to all ability levels. Rather than seeing the program as an advanced photography course, it's better to think of it as a chance to maximise your photographic opportunities across excursions and to accelerate your learning of the craft to ensure you make the most of your once-in-a-lifetime chance to capture stunning images of the Antarctic.

What sort of content will be covered in the program?

The Antarctic presents many opportunities and challenges to photographers. The wildlife and landscapes here are unlike any others on Earth, meaning unique subjects for once-in-a-lifetime images are around every corner.

The onboard program will prepare you for what to expect - both technically and conceptually - each day.

Your Polar Photography Guides will cover topics like creative composition, exposure settings, digital workflow and editing all in consideration of the trip's planned itinerary, meaning that you can embark upon each excursion with the confidence and knowledge to achieve stunning results.

How can I keep my camera safe from the elements in Antarctica?

While in Antarctica, the cold, wind, and waves of the Antarctic Peninsula can mean occasionally challenging conditions for photographers. We suggest bringing along a few tools for keeping your camera dry and warm, which will enable you

to maximize your time behind the lens. This includes a dry bag or a bag with great insulation, several cleaning cloths, a "rocket blower" for getting rid of water droplets and dust, several memory cards, and a few spare batteries for your camera, as Lithium units tend to drain quickly in lower temperatures.

Should I bring a laptop/iPad?

While we will certainly be looking to maximise our time taking photographs on excursions and out on deck around the ship, on sea days we will also be offering editing workshops along with advice on storing, processing and formatting your images ready for print and social media.

Much like your choice of camera, we suggest bringing your own laptop or device - with software that you are familiar with. For those photographers who are shooting RAW files, it is also a good idea to make sure that your device is capable of reading the image files that come from your camera before you join your voyage.

Should I bring a flash or other lights with me?

Due to the sensitive nature of Antarctic wildlife (most of whom have never seen a human being before!), we don't encourage using flash photography while on excursions.

A flash is a terrific idea if you are interested in photographing around the ship, capturing images of the spaces and faces you have shared your voyage with. However, it is mostly unnecessary when outside due to the long hours of Antarctic daylight.

Should I bring a tripod?

The lighting in Antarctica is typically sufficient for shutter speeds that do not necessitate a tripod.

If you choose to bring a tripod for shore landings, please note that it must be bio-secured after each landing. Additionally, tripods cannot be placed close to wildlife and then left unattended; this must adhere to IAATO distance guidelines from wildlife. It is not recommended to use a tripod while on board due to vibrations caused by the ship engines.

My camera has interchangeable lenses. Which should I bring?

Whether Zodiac cruising, during shore landings, or photographing from the ship, the vast array of photographic opportunities in the Antarctic means that on any given day you could see whales on the horizon or sit on the beach just feet away from penguins.

But Antarctica's elements and our hands-on excursions can also mean that changing lenses is not always ideal.

Considering these things, we suggest bringing a couple of zoom lenses that will cover most focal lengths. A 24-70mm and a 70-200mm should cover most scenarios and the wildlife we will likely encounter.

While the wildlife in Antarctica is rarely shy, an even longer telephoto zoom lens is an added bonus for those with a keen interest in wildlife photography.

A 100-400mm is typically more than adequate.

Should I bring any other equipment?

While the Antarctic's photogenic nature means you can capture astounding images on your smartphone and camera alike, several pieces of equipment can help to keep your camera safe and enhance your creative capabilities.

A few items you might like to consider adding to your kit (though they are by no means essential) include a UV filter to avoid damage to your lens from snow and sand, a circular polarising filter to reduce glare and reflections likely encountered when out on the water, and a neutral density filter to allow for long exposures during the extended daylight hours.

If you're interested in shooting video, a shotgun microphone that can be mounted on your camera is great for capturing better sound and an inexpensive stabiliser/gimbal will help you achieve much smoother footage when out and about in Zodiacs.

Your Packing List:

In order to get the most of the Photography Program, we recommend you bring the following:

- Camera(s)
- Lens(es)
- Spare batteries
- Battery charger & power leads
- Extra memory cards
- Laptop, iPad, or device and power cables
- Power adaptor
- Dry bag/waterproof bag for camera
- Cleaning products/lens cloths
- Warm gloves that you can wear while operating your camera

Optional items you may wish to bring:

- Lens filters (ND, polarising)
- Tripod (see notes on tripods)
- Wireless/remote cable release
- Cleaning supplies:
 - Rocket blower
 - Sensor cleaners
- Knee pads to protect your knees when kneeling in Zodiacs

