

ECUADOR - GALAPAGOS 5 DAY CRUISE B | CORAL I & II



INTRODUCTION

Cruise the Galapagos Islands with this 5 day itinerary full of beautiful nature and exploration.

Go deep water snorkeling in Vicente Roca Point, at one of the richest marine areas in the world and have the chance to see Nazca and Blue-footed Boobies, Noddies and Brown Pelicans. Also visit Fernandina Island, the youngest island of the Galapagos which offers beautiful volcanic landscapes and is probably the only island in the world completely free of introduced species.

ITINERARY

DAY 1: Baltra Airport

Departure from Quito or Guayaquil to Baltra (2 ½ hours flight). Arriving in Galapagos, passengers are picked up at the airport by our naturalist guides and taken on a ten minute bus drive to the pier to board the M/Y Coral II. Highlands Tortoise Reserve & Pit Craters (Santa Cruz Island) Dry landing. In the central highlands of Santa Cruz Island you have your best opportunity to interact at close quarters with totally wild, Galapagos giant tortoises. A short walk among these huge, 600lb, reptiles will also offer the chance for more highland species, especially several species of the famed finches. A visit to the collapsed, twin sinkholes (Gemelos) puts you in a stunning forest of the endemic tree-forming Scalesia. Apart from the dramatic scenery, this area is well known for its diversity of passerine bird species.



TRIP CODE

ECTSC5D

DEPARTURE

Selected Wednesdays

DURATION

5 Days

LOCATIONS

Ecuador, Galapagos Islands




ECUADOR - GALAPAGOS 5 DAY CRUISE B | CORAL I & II

DAY 2: Vicente Roca Point (Isabela Island)

AM- Punta Vicente Roca (Isabela Island) This is a spectacular visitor site, surrounded by immense cliffs of the eroded volcano. Studded with resting seabirds such as brown noddies and Nazca boobies, we will enjoy them in close proximity from our dinghies. Snorkeling here is superb, with certain species of fish only found in the west of the archipelago. We also have a very real chance of swimming with penguins and potentially a plethora of green turtles. PM - Punta Espinosa (Fernandina Island) Dry landing. The youngest island of Galapagos and one of the most pristine in the world. Fernandina is simply the marine iguana capital of the world. This desolate volcanic backdrop is home to a huge concentration of these enigmatic reptiles. Incongruously, sharing the same shoreline, we can find the diminutive Galapagos penguins. Here we also have the exciting opportunity to snorkel with marine iguanas feeding underwater, penguins, turtles and the bizarre, endemic, flightless cormorants.



| |
|--|
| TRIP CODE |
| ECTSC5D |
| DEPARTURE |
| Selected Wednesdays |
| DURATION |
| 5 Days |
| LOCATIONS |
| Ecuador, Galapagos Islands |
|  |

DAY 3: Urbina Bay (Isabela Island)

AM - Urbina Bay (Isabela Island) Wet landing. At the far end of a long, level hike we arrive at a strange phenomenon where large blocks of coral lie completely exposed after a dramatic geological uplift in 1954. Located at the western base of Alcedo Volcano we hope to run into a few very impressive land iguanas as well as some of the volcano's endemic Galapagos giant tortoises during the wet season. PM - Tagus Cove (Isabela) Dry landing. A well-known hideout and deep water anchorage in the days of pirates, Tagus Cove was also one of the few sites visited by Charles Darwin and the HMS Beagle in 1835. A beautiful hike leads us past an overview of Darwin Lake and on to a stunning volcanic landscape revealing Isabela island's dramatic northern volcanoes. Once back at sea level the perfect activity is to snorkel along a submerged wall with turtles, lots of fish, penguins and potentially flightless cormorants. You might even be tempted by a panga ride or kayak!




ECUADOR - GALAPAGOS 5 DAY CRUISE B | CORAL I & II

DAY 4: Egas Port (Santiago Island)

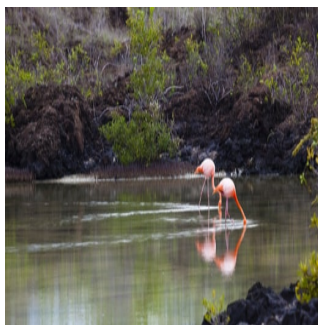
AM - Egas Port (Santiago Island) Wet landing. The black volcanic sand sets this landing apart from most. It is best known for the dramatic shoreline where you meet a host of species that chose to live between land and sea. Particular among these are the endemic Galapagos fur seals which maintain a small colony at the end of your walk. Other species of note include American oystercatchers, sea lions, waders, herons, lava lizards and even Galapagos hawks. An optional visit takes you to an abandoned salt mine famous in its day for supplying salt to mainland Ecuador. PM - Sullivan Bay (Santiago Island) Wet landing. Although, when viewed from the sea, the site does not look especially interesting visitors are always totally enthralled by the amazing beds of pahoehoe lava from the recent flow on the island. It is a landscape and macro photographer's dream. The importance of pioneer plants such as the tiny Mollugo will be discussed as you hike over the lava. After your land visit you can enjoy a refreshing snorkel in the company of sea lions, turtles and rays.



| |
|--|
| TRIP CODE |
| ECTSC5D |
| DEPARTURE |
| Selected Wednesdays |
| DURATION |
| 5 Days |
| LOCATIONS |
| Ecuador, Galapagos Islands |
|  |

DAY 5: Bachas Beach (Santa Cruz Island)


AM - Bachas Beach (Santa Cruz Island) Wet landing. Named for some wrecked World War II barges whose ribs are still visible in the sand this visitor site offers great swimming, a lovely walk along the shore and a visit to a lagoon behind the high tide line with wading birds, marine iguanas and sometimes even flamingoes. The two beaches are also favorite nesting sites for green turtles which often leave tractor-like tracks in the sand. After the visit you will be taken to the airport for your return flight to Guayaquil or Quito.



| INCLUSIONS & DETAILS | |
|----------------------|----------|
| Accommodation | Standard |

ECUADOR - GALAPAGOS 5 DAY CRUISE B | CORAL I & II

| | |
|-----------------------------|--|
| Inclusions | <ul style="list-style-type: none"> Shipboard accommodation All meals whilst on board including snacks All shore excursions Guiding and lectures by Galapagos Naturalist Guide English-speaking Expedition team Fuel surcharge Welcome and farewell cocktails <p>Exclusions</p> <ul style="list-style-type: none"> Return airfares from mainland Ecuador Galapagos National Park Entrance Fee (US\$100 per person subject to change) Galapagos Transit Control Card (US\$20 per person subject to change) Visa Fees (if applicable) Travel insurance Gratuities for the crew Optional activities whilst on board |
| Difficulty Rating | 1 (easy) |
| Single Surcharge | Available upon request |
| Notes | Contact us for more details |
| Price Dependent upon | Season and availability |

| |
|--|
| TRIP CODE |
| ECTSC5D |
| DEPARTURE |
| Selected Wednesdays |
| DURATION |
| 5 Days |
| LOCATIONS |
| Ecuador, Galapagos Islands |
|  |

SUSTAINABILITY

Chimu Adventures undertakes a number of sustainability measures within its operations including:

- 1) Only using local guides and office staff to both maximise local employment opportunities and minimise carbon footprints. Local guides also ensure you benefit from the intimate knowledge, passion and culture of the country you're visiting.
- 2) Where possible, using locally owned and operated boutique hotels to maximise the return to the local community.
- 3) Chimu's "Pass it on" programme has provided funding to hundreds of local community projects in Latin America. Our aim is to empower local communities, helping them to develop their own infrastructure for the future. Since 2006, we have been working with Kiva (a well-known Non-Governmental Organisation), providing hundreds of loans to local businesses all over South America.
- 4) In our pre tour information we provide a range of tips and advice on how to minimise your impact on both local environments and communities.
- 5) Chimu Adventures' offices also take a number of sustainability measures including carbon offsets for company vehicles and most staff travel. Chimu Adventure's internal processes are also structured to create a paperless office and to reduce waste. There are

ECUADOR - GALAPAGOS 5 DAY CRUISE B | CORAL I & II

also internal programmes to help staff minimise their carbon footprint such as our staff bike purchase assistance plan which encourages office staff to commute to work via bicycle. Currently almost half of our office based staff commute to work via bicycle.

TRIP CODE

ECTSC5D

DEPARTURE

Selected Wednesdays

DURATION

5 Days

LOCATIONS

Ecuador, Galapagos
Islands

