

SOUTH AMERICA - THE GRINGO TRAIL



INTRODUCTION

Choose this suggested itinerary or customise to create your own unique journey. Operates daily to suit your travel plans. Price based on Standard accommodation. Superior or Deluxe also available.

Your journey starts in Buenos Aires. After a few days here, say goodbye to the big city as you fly to Iguazu Falls. After a quick onward flight, you will begin the Gringo Trail which starts in Salta with a few days to explore the city and its surrounding area. From Salta, continue to Uyuni, but not before a couple of pitstops in La Quiaca and Tupiza. In Uyuni, experience the famed Salt Flats. Then it'll be off to La Paz before heading to Peru, beginning in Puno then to Cusco for your trip to the Incan ruins of Machu Picchu.

ITINERARY

DAY 1: Arrival transfer in Buenos Aires

On arrival, please make your way through to the Arrivals Hall where our representative will be waiting for you to transfer you to your hotel. This service includes a driver and local English speaking guide, who will provide you with any useful information needed for your stay. He/she will be holding a sign with your name on it.



TRIP CODE

MCTSGRI

DEPARTURE

Daily

DURATION

20 Days

LOCATIONS

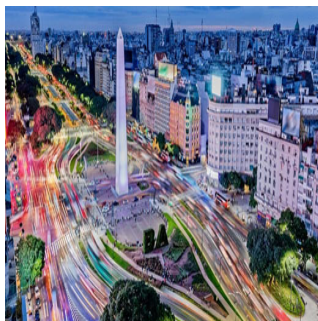
Argentina, Bolivia, Peru, Machu Picchu



SOUTH AMERICA - THE GRINGO TRAIL

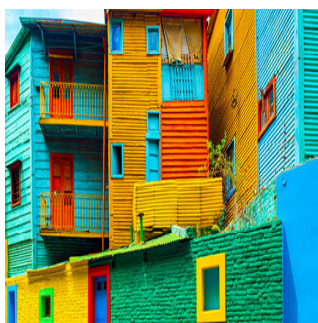
DAY 1: Buenos Aires

Buenos Aires, Argentina's elegant, historic and cosmopolitan capital, is known as the "Paris of the South" due to its European atmosphere with glamorous avenues lined with fashionable shops and Parisian-style restaurants and cafes. Located on the western shore of the estuary of the Río de la Plata, Buenos Aires has many fascinating neighbourhoods to explore including the colourful and lively La Boca, home to art galleries and tango shows; San Telmo with its restored mansions and antique stores and Recoleta, the city's most exclusive area.



DAY 2: Morning Highlights of Buenos Aires City Tour

You will be collected from your hotel for your three-hour morning tour visiting the most important highlights of the city of Buenos Aires. Discover the history of the Plaza de Mayo Square, the site of Argentina's most important historical events - see its surroundings and the most emblematic buildings and learn all about them. Then enjoy Mayo Avenue and wonder in awe at the oldest residential neighbourhood in Buenos Aires: San Telmo. Live and feel the original Tango in the neighbourhood of La Boca: walk along Caminito Street and enjoy the Dancers and souvenir shops. See the mythical Boca Juniors soccer stadium. Contemplate the modernization of the city whilst traveling along Puerto Madero and its exclusive docks, full of excellent restaurants and large offices. Pass through the Retiro neighbourhood and move on to see Palermo and its most exclusive residential area before finally arriving at Recoleta. The tour comes to an end near the Recoleta Cemetery. Here you can choose to be taken back to the hotel with the group, or to continue unguided into the cemetery, where you can find the final resting place of Eva Peron, "Evita." Please note: This is a small group tour. If you wish to stay behind and visit the Recoleta Cemetery, there is an entrance fee of approximately \$15 USD, payable locally, you would then need to make your own way back to the hotel.



TRIP CODE

MCTSGRI

DEPARTURE

Daily

DURATION

20 Days

LOCATIONS

Argentina, Bolivia, Peru, Machu Picchu



SOUTH AMERICA - THE GRINGO TRAIL

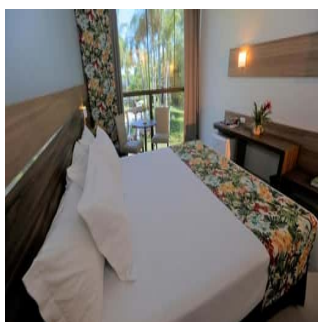
DAY 2: El Querandi Tango Show & Dinner

This evening you will be collected from your hotel to experience a Tango Show with dinner. This is an intimate & passionate tango show, housed in a cozy wood-panelled 19th century building with a colourful history as a meeting point for poets and students in the heart of Buenos Aires's historic centre. After being abandoned in the late 1970s, the bar was restored and reopened in 1992 as El Querandí Tango Hall. The show is directed by Claudio Campos, with musical arrangements by Ado Falasca, and it smoothly charts the history of Argentina's most authentic artistic expression from its origins to the modern day. The dinner is better than many, and at just over an hour long, the show is the perfect length. The three house singers, six dancers and four musicians put on a great show. Dinner will be served from 8.30pm followed by the show commencing at 10.00pm. Please note timings are subject to change and will be confirmed directly to you. On completion of the show, you will be taken to your hotel. Please note this is a small group tour.



DAY 3: Transfer to the airport for onward destination

You will be collected from your hotel at the appropriate time and transferred to the airport for your onward flight. This service includes a driver only.



TRIP CODE

MCTSGRI

DEPARTURE

Daily

DURATION

20 Days

LOCATIONS

Argentina, Bolivia, Peru, Machu Picchu



SOUTH AMERICA - THE GRINGO TRAIL

DAY 3: Iguazu Arrival And Brazil Falls Tour

On arrival, please make your way through to the Arrivals Hall where our representative will be waiting for you to transfer you to your hotel. He/she will be holding a sign with your name on it. Should you not be able to locate them, please refer to the front of your itinerary for emergency contact details of our representative office. Enroute to your hotel, you will visit the Brazil side of the falls. After arriving at the visitor centre, board one of the Park Authority's tourist buses and enter the National Park. Equipped with panoramic windows, the buses are designed to maximize your views of the falls, while the walkways and steps provide you with great panoramic views of the Argentinian side of the falls. Views of the Floriana Falls, the Devil's Gorge Canyon and the Iguazu River are spectacular and are guaranteed to impress. National Park Fee included. On completion of your tour you will be taken to your hotel. Please note this is a small group tour service and includes local english speaking guide.



TRIP CODE

MCTSGRI

DEPARTURE

Daily

DURATION

20 Days

LOCATIONS

Argentina, Bolivia, Peru, Machu Picchu



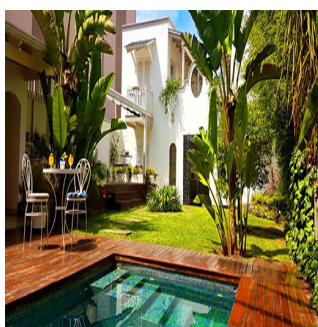
DAY 4: Iguazu Falls - Argentinean Side

After an early morning pick up from your hotel, we travel to the Argentinean side of the Iguazu Falls. Beginning at the visitor's centre, we take a ride on the Rainforest Ecological train before exploring the upper and lower circuit footbridges. The footbridges, which are raised off the jungle floor, provide panoramic views from above and below the falls. A visit to Devil's Gorge arguably the most spectacular falls, is one of the day's highlights.



DAY 5: Transfer to the airport for onward destination

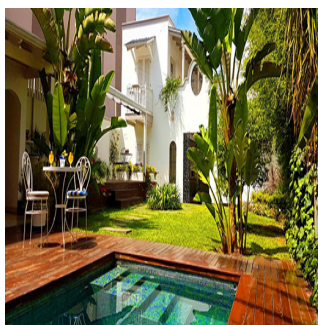
You will be collected from your hotel at the appropriate time and transferred to the airport for your onward flight.



SOUTH AMERICA - THE GRINGO TRAIL

DAY 5: Arrival transfer in Salta

On arrival, please make your way through to the Arrivals Hall where our representative will be waiting for you to transfer you to your hotel. This service includes a driver and local English speaking guide, who will provide you with any useful information needed for your stay. He/she will be holding a sign with your name on it. Should you not be able to locate them, please refer to the front of your itinerary for emergency contact details of our representative office.



DAY 5: Salta

Known as "Salta la Linda" (Salta the Pretty), Salta is a provincial capital in the mountainous north western part of Argentina. Founded in 1582, it is known for its Spanish colonial architecture and cobblestone streets as well as its Andean heritage. The centre of the city is the Plaza 9 de Julio, an elegant square bordered by the cathedral and El Cabildo, an 18th century town hall that is now a historical museum.



DAY 6: Salta - Cachi - Cafayate

We set out from Salta travelling south to El Carril and entering the Laurel and Escoipe Gorges. From here we head up the Cuesta del Obispo, enjoying stunning views of the Enchanted Valley below before reaching the Mill Stone. At 3,384 meters, this is the highest point of the trip. From here we cross the Los Cardones National Park, named after the cactus plants that grow here before stopping at the charming mountain town of Cachi. We continue along Route 40 to arrive in the sleepy town of Cafayate where we spend the night.



DAY 7: Cafayate - Salta

We begin this morning with a tour of Cafayate before boarding the bus for our return journey. This time we follow Route 68 traversing the Quebrada de las Conchas (Valley of Shells), where erosion caused by wind and water has carved various recognisable shapes out of the bright red rock.



NO IMAGE
AVAILABLE

TRIP CODE

MCTSGRI

DEPARTURE

Daily

DURATION

20 Days

LOCATIONS

Argentina, Bolivia, Peru, Machu Picchu



SOUTH AMERICA - THE GRINGO TRAIL

DAY 8: Salta Private Transfer to La Quiaca

Private transfer from your hotel in Salta to the border with Bolivia at La Quiaca. Please note this transfer includes local English speaking driver and only operates during the day. Journey will take approximately five hours and 30 minutes.



DAY 8: La Quiaca - Tupiza

Once you have passed through the border formalities and enter into Boliva, you will be met by our representative who will drive you to Tupiza where you will overnight.



DAY 9: Tupiza - Uyuni - Colchani

DAY 9: Uyuni

Uyuni, founded in 1889 by Bolivian president Aniceto Arce, is still an important military base. It lies in south-western Bolivia, 3,670 metres above sea level and situated on the edge of the Salar de Uyuni, the largest salt flat in the world. The Salar de Uyuni covers 12,000 square kilometres of the Bolivian Altiplano and is fringed by the mountains of the Andes. Beneath it lies the world's largest lithium reserve estimated to be about 100 million tons. The salt in the salt flats is over 120 metres deep. The area is remote, arid and cold, stark, yet stunning, boasting extraordinary beauty and a silence that is captivating.



DAY 10: Salt Flats

Today spend the day exploring the Salt Flats. Enroute visit a Salt Factory, the salt mounts and Salt Museum. Enter the impressive Salt Flats and head north to visit the pre-Columbian Pucara de Ayque Fort and the nearby chullpares on the foothills of Thunupa volcano. A picnic lunch in the middle of the Salt Flats is included.



TRIP CODE

MCTSGRI

DEPARTURE

Daily

DURATION

20 Days

LOCATIONS

Argentina, Bolivia, Peru, Machu Picchu



SOUTH AMERICA - THE GRINGO TRAIL

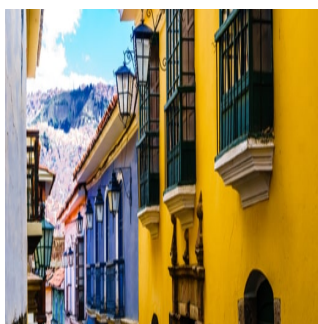
DAY 11: Salt Flats - La Paz

Today visit Isla Incahuasi, home to a special habitat of giant cactus and volcanic rocks. Enjoy a picnic lunch and continue onto the Ojo de Agua (Eyes of Salt), where water bubbles up from subterranean rivers flowing under the Salt Flats. Continue to Uyuni Airport in time to board a flight to La Paz.



DAY 12: La Paz City and Moon Valley

In the morning you will have a tour of the city of La Paz and its surroundings, where it can transport you to a mysterious past where any corner of any street is a hidden treasure. The Native, colonial and modern areas, Indian Market, Witch Doctor's Market & breathtaking panoramas are all framed by the majestic Illimani" mountain. You will then visit the Moon Valley, a clay formation resembling the face of the Moon. By afternoon you will arrive at Huatajata to experience the Andean Roots Eco Village and The Altiplano Museum where you will be told of the cultural heritage of the Aymaras and the Incas. You can go shopping for local handicrafts and visit fishing villages; then meet the Limachi family; builders of the RA II and Tigris for Thor Heyerdhal, epic expeditions across the Atlantic Ocean. You can spend some time at the Kallawayaya Natural Spa where we use thousand years' old methods and treatments for stress and cosmetology. Later an audiovisual and night visit to "The Mystic World of the Kallawayas, natural healers of Bolivia is planned. They believe that you first have to heal the soul in order to heal your body. Tata Benjo, our Kallawayaya, will bless visitors and answer questions by casting his sacred coca leaves. Candlelight dinner follows. Night visit to the Native Observatory Alajpacha; learn from the Aymaras cosmovision & Southern constellations. Overnight at the unique Inca Utama Hotel & Spa.



TRIP CODE

MCTSGRI

DEPARTURE

Daily

DURATION

20 Days

LOCATIONS

Argentina, Bolivia, Peru, Machu Picchu



SOUTH AMERICA - THE GRINGO TRAIL

DAY 13: La Paz to Copacabana

This morning you will be collected from your La Paz hotel and travel north through the highlands and parallel to the Andes Royal Range to Copacabana, a small town located on the shored of Lake Titica. Visit the famous Virgen Morena and its church, have a stroll through the town and board the boat that will take you to the Island of the Sun. Enjoy a typical lunch Aptapi and then hike for about 45 minutes to the Ecolodge La Estancia. Dinner included this evening.



DAY 14: Copacabana to Puno

The morning is at leisure. Around noon visit the Inca "Grand Stairs" and the Sacred Fountain; taste the water believed to give eternal youth and happiness. Lunch at the Uma Kollu archaeological Restaurant; Visit the small handicraft market. Hydrofoil cruise to Copacabana. Once in Copacabana, visit to the shrine and the Dark Indian Virgin". Overland journey to your hotel in Puno.



DAY 14: Puno

Puno lies on the shores of Lake Titicaca, the highest navigable lake in the world. It is the largest city in the Southern Altiplano and an important agricultural and livestock (llamas and alpaca) region. It sits at an altitude of over 3,800 metres and is a picturesque hillside city and a melting pot of the Aymara and Quechua culture.



TRIP CODE

MCTSGRI

DEPARTURE

Daily

DURATION

20 Days

LOCATIONS

Argentina, Bolivia, Peru, Machu Picchu



SOUTH AMERICA - THE GRINGO TRAIL

DAY 15: Titicaca Explorer

Early this morning you will be collected from your hotel and transferred to the port to board a fully equipped speedboat to visit various islands on Lake Titicaca. First stop is Taquile Island where you will explore a scenic and less touristy area. Enjoy time on a pristine sandy beach to relax and feel the serenity of Lake Titicaca. We then hike along a pre-Inca trail with spectacular landscapes of the island, visiting families of weavers to learn about their textile art and symbolism. In 2005, "Taquile and its Textile Art" were proclaimed "Masterpieces of the Oral and Intangible Heritage of Humanity" by UNESCO. Afterwards, board the speedboat for a short journey to the community of Santa Maria-Llachon, on the tip of the Capachica Peninsula. This is a picturesque off the beaten track destination. We are welcomed by the small Quechua speaking community and introduced to an intensive cultural experience, observing the traditions of the community and participating in an ancient ceremony to learn about their magical world. Experience the preparation of "Pachamanca", a traditional way of cooking meat, fish and potatoes using underground ovens, and one of the main dishes of Peruvian cuisine. Enjoy these delicacies in a small, but scenic restaurant (included in tour price). For the more adventurous there is an optional kayak along the coast of Llachon. After lunch we leave Santa Maria and arrive at a remote area of the National Reserve of Lake Titicaca to explore Uros Titino. These are considered to be the last authentic floating islands, less commercial and little visited. The Uros are descendants of one of the oldest cultures in South America. There are optional tours in reed boats before we depart back to Puno. On arrival at the port, you will be transferred to your hotel. Please note this is small group tour. Please note there is a minimum number of passengers required to operate this tour, if the required number of passengers is not reached we will offer you a similar alternative. Order of excursions may also change. Please also note that between the months of January and March the ceremony of "Pachamama" will be subject to weather conditions



TRIP CODE

MCTSGRI

DEPARTURE

Daily

DURATION

20 Days

LOCATIONS

Argentina, Bolivia, Peru, Machu Picchu



SOUTH AMERICA - THE GRINGO TRAIL

DAY 16: Transfer from Puno hotel to bus or train station

This morning, you will be collected from your hotel and transferred to either the bus or train station for your journey from Puno to Cusco.



DAY 16: Puno to Cusco

The spectacular journey from Puno to Cusco takes you across the Altiplano and you will travel accompanied by an English-speaking guide. The drive takes you through sleepy Andean villages and past spectacular snowcapped mountains, sheer cliffs and rampaging rivers. Stops along the way include the atmospheric towns of Pucara and Andahuaylillas and the pre-Inca ruin of Raqchi. Lunch is included and you will arrive in the famous city of Cusco in the early evening. The journey will take approximately 10 hours.



DAY 16: Arrival transfer in Cusco

On arrival at Cusco bus or train station, you will be met by a representative who will be holding a sign with your name on it, to transfer you to your hotel.



DAY 16: Cusco

Cusco, set at an altitude of 3,400 metres in the Peruvian Andes, was once the capital of the Inca Empire. It is known for its Spanish colonial architecture and Incan remains. Narrow, cobblestoned streets lined by Inca walls stretch out from the main plaza in every direction. Many of the colonial buildings were built on top of Incan foundations and the stonework is unparalleled in its precision and beauty.



TRIP CODE

MCTSGRI

DEPARTURE

Daily

DURATION

20 Days

LOCATIONS

Argentina, Bolivia, Peru, Machu Picchu



SOUTH AMERICA - THE GRINGO TRAIL

DAY 17: Cusco - City Tour

You will be collected from your hotel for a sightseeing tour through Cusco, the heart of the Inca Empire. Visit the fascinating Qorikancha Temple of the Sun, the 12-Angled Rock and the Cathedral, built on the ruins of an Inca Palace. From here head to the archaeological remains located around the city, including the fortress of Sacsayhuaman, Qenqo (giant rock), the ancient site of Puca Pucara and finally the Water Temple of Tambomachay. On completion of your tour, you will be taken to your hotel. Included in your tour price is the BTG (Tourist Ticket of Cusco). Please note this is a small group tour.



DAY 18: Sacred Valley Tour

This morning you will be collected from your hotel for full day of exploring the Sacred Valley of the Incas. This fertile river valley was home to many important sites for the Incas, both strategic and religious. The first stop is the village of Pisac, with its famous market. The colonial village of Pisac sits at the base of the spectacular Pisac Ruins - a hilltop Inca citadel and fortress with impressive agricultural terracing. On market days Pisac comes alive with locals from nearby hillside villages in traditional dress selling local fruit and vegetables as well as handicrafts. There is free time to wander the colourful market stalls before a typical Andean lunch at a local restaurant. Continue your journey along the River Urubamba, to Ollantaytambo. The town, which is dominated by a giant Inca fortress, is perhaps the best surviving example of Inca town planning and was the scene of a rare Inca victory over the invading Spanish. Lunch is included.



DAY 18: Ollantaytambo to Aguas Calientes

Travel from Ollantaytambo to Machu Picchu in this comfortable train, and let your feet have rest. Enjoy an authentic Andean experience, while relaxing in modern and comfortable interior design illuminated by Latin American music. Comfortable seats with tables in front to share the journey with friends. *Due to limited space for luggage storage on trains, luggage restrictions apply: one bag or backpack (carry-on luggage) with a maximum weight of 5.0 kg/11 lb, measuring no more than 62 linear inches/157 linear cm (height + length + width)



TRIP CODE

MCTSGRI

DEPARTURE

Daily

DURATION

20 Days

LOCATIONS

Argentina, Bolivia, Peru, Machu Picchu



SOUTH AMERICA - THE GRINGO TRAIL

DAY 19: Machu Picchu Guided Tour

Machu Picchu is a 15th century Inca site, located 2,430 metres above sea level on a mountain ridge above the Sacred Valley. It is the most famous of all Inca sites, but it was not until 1911 that it was brought to the world's attention by the American historian Hiram Bingham. The Incas abandoned the city just prior to Spanish colonisation, the city was never pillaged and as a result the ruins are still in fantastic condition. With its location on a dramatic ridgeline surrounded by sheer cliffs and the Urubamba River on three sides, the city of Machu Picchu is a remarkable place to visit. Machu Picchu was declared a UNESCO World Heritage Site in 1983 and in 2007 it was voted one of the new Seven Wonders of the World. The tour starts with a bus ride from Aguas Calientes to Machu Picchu. You will be astonished at your first view of Machu Picchu, a stunning display of ancient architecture with incredible surroundings. Enjoy a guided shared tour of the ruins. The shared tours will generally take circuit 1 which is the high/short route. You will explore the upper platforms of the site, where you can enjoy a panoramic view over the ruins. You will visit the Guardian's hut and then continue to the Puente del Inca (Incan Gate) and the urban sector of the citadel. Take the path on to the quarry and head on to the Casa Del Inca, Hall of Mirrors and Temple of the Condor. Return by bus to Aguas Calientes village. Please note that shared tours run with a maximum of 8 guests and 1 local expert guide. Please be aware that your tour of Machu Picchu does not include an entry permit to Huayna Picchu (the iconic hill behind the Machu Picchu ruins). If you want to climb Huayna Picchu then you need to pre-book your permit with at least 3 months in advance. Please contact your travel specialist if you would like to do this.



TRIP CODE

MCTSGRI

DEPARTURE

Daily

DURATION

20 Days

LOCATIONS

Argentina, Bolivia, Peru, Machu Picchu



DAY 19: 360 Machu Picchu Train: Mapi - Ollanta PM

This afternoon travel by train from Aguas Calientes to Ollantaytambo. *Due to limited space for luggage storage on trains, luggage restrictions apply: one bag or backpack (carry-on luggage) with a maximum weight of 5.0 kg/11 lb, measuring no more than 62 linear inches/157 linear cm (height + length + width)



SOUTH AMERICA - THE GRINGO TRAIL

DAY 19: Private Transfer Ollantaytambo - Cusco

Transfer from Ollantaytambo train station in the Sacred Valley to Cusco.



DAY 20: Transfer to the airport for onward destination

You will be collected from your hotel at the appropriate time and transferred to the airport for your onward flight.



TRIP CODE

MCTSGRI

DEPARTURE

Daily

DURATION

20 Days

LOCATIONS

Argentina, Bolivia, Peru, Machu Picchu



INCLUSIONS & DETAILS

Accommodation	Hotels and rustic hostels in the Bolivian Salt Flats
Inclusions	<div> <div> <p>Airport transfers</p> <p>Internal flights</p> <p>Accommodation with breakfast</p> <p>All inclusive accommodation in the Amazon and Galapagos Cruise</p> <p>Tours as stated in the itinerary</p> <p>Other meals where stated</p> </div> <div> <p>EXCLUSIONS:</p> <p>Personal expenses</p> <p>Gratuities for staff/guides</p> <p>Alcoholic beverages in Amazon Lodge</p> <p>International flights</p> <p>Visa and reciprocity fees (if applicable)</p> <p>Any items not mentioned as included</p> </div> </div>
Difficulty Rating	3 Light Adventure (High altitude in some areas)
Single Surcharge	Available on request. Contact us for more details.

SOUTH AMERICA - THE GRINGO TRAIL

Notes

All entrance fees are subject to change without prior notice.
This is a Tailor-Made itinerary which can be customised to create your own unique journey. Contact us to discuss your travel plans.

Price Dependent upon

Season and availability

SUSTAINABILITY

Being environmentally accountable is a crucial part of our organisation. Chimu is currently striving towards using less paper, taking several initiatives to do so and tracking our progress along the way. Our goal: A paperless organisation. For this reason, all information given to you will be sent electronically. We encourage those who choose to travel with us to support our aspirations and actions and ask that you reconsider printing out documentation. To view these documents, you can download them to your iPad or portable computer before and during your trip.

Chimu is passionate and dedicated to sustainability measures and understands the crucial part sustainability plays within the tourism industry.

We use local guides and office staff to both maximise local employment opportunities and minimise carbon footprint. Local guides also ensure you benefit from the intimate knowledge, passion and culture of the country you're visiting. Our guides are all highly qualified (most with university degrees) or equip with many years of experience and are paid above the standard wage. Whether it be our knowledgeable local guides, locally produced meals or the transport on tour, we do not use imported goods when local products are available. We aim to minimise our impact on the environment and give as much back as possible to the communities we work in.

While visiting the many national parks, heritage sites, museums and landmarks our travellers are encouraged to explore remain culturally aware and sensitive. We further encourage you to buy appropriate souvenirs and discourage the buying of anything wrongfully made or taken from the environment i.e. shells and endangered species products. Information on how you can be environmentally conscious, and travel responsibly will be made available in our Travellers Guides and provided during your travels by guides and staff.

For more information on our sustainability policies, including how we are striving towards being a paperless organisation, click [HERE](#)

TRIP CODE

MCTSGRI

DEPARTURE

Daily

DURATION

20 Days

LOCATIONS

Argentina, Bolivia, Peru, Machu Picchu

