

SOUTH AMERICA - SOUTH AMERICA EXPRESS



INTRODUCTION

Choose this suggested itinerary or customise to create your own unique journey. Operates daily to suit your travel plans. Price based on budget accommodation. Superior or Deluxe also available.

Fly into the Argentinian capital, Buenos Aires, to begin your trip across South America. After a few days to enjoy the elegant metropolis, make your way to the majestic cascades of Iguazu Falls. See both the Brazilian and Argentinian sides of the falls then travel to Rio de Janeiro, one of the most attractive cities in the world. The Peruvian capital of Lima is ready to be explored for the day before you fly to Cusco. Here, you will see not only the modern city, but the ruins of the ancient Incan civilization at Ollantaytambo and Machu Picchu.

ITINERARY

DAY 1: Arrival transfer in Buenos Aires

On arrival, please make your way through to the Arrivals Hall where our representative will be waiting for you to transfer you to your hotel. This service includes a driver and local English speaking guide, who will provide you with any useful information needed for your stay. He/she will be holding a sign with your name on it.



TRIP CODE

MCTSSAE

DEPARTURE

Daily

DURATION

12 Days

LOCATIONS

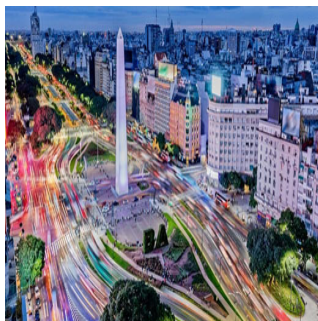
Argentina, Brazil, Peru, Machu Picchu



SOUTH AMERICA - SOUTH AMERICA EXPRESS

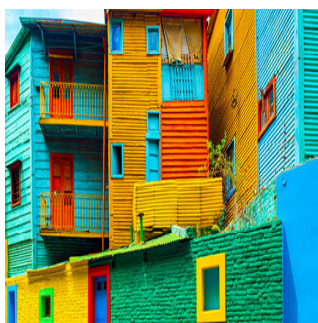
DAY 1: Buenos Aires

Buenos Aires, Argentina's elegant, historic and cosmopolitan capital, is known as the "Paris of the South" due to its European atmosphere with glamorous avenues lined with fashionable shops and Parisian-style restaurants and cafes. Located on the western shore of the estuary of the Río de la Plata, Buenos Aires has many fascinating neighbourhoods to explore including the colourful and lively La Boca, home to art galleries and tango shows; San Telmo with its restored mansions and antique stores and Recoleta, the city's most exclusive area.



DAY 2: Morning Highlights of Buenos Aires City Tour

You will be collected from your hotel for your three-hour morning tour visiting the most important highlights of the city of Buenos Aires. Discover the history of the Plaza de Mayo Square, the site of Argentina's most important historical events - see its surroundings and the most emblematic buildings and learn all about them. Then enjoy Mayo Avenue and wonder in awe at the oldest residential neighbourhood in Buenos Aires: San Telmo. Live and feel the original Tango in the neighbourhood of La Boca: walk along Caminito Street and enjoy the Dancers and souvenir shops. See the mythical Boca Juniors soccer stadium. Contemplate the modernization of the city whilst traveling along Puerto Madero and its exclusive docks, full of excellent restaurants and large offices. Pass through the Retiro neighbourhood and move on to see Palermo and its most exclusive residential area before finally arriving at Recoleta. The tour comes to an end near the Recoleta Cemetery. Here you can choose to be taken back to the hotel with the group, or to continue unguided into the cemetery, where you can find the final resting place of Eva Peron, "Evita." Please note: This is a small group tour. If you wish to stay behind and visit the Recoleta Cemetery, there is an entrance fee of approximately \$15 USD, payable locally, you would then need to make your own way back to the hotel.



TRIP CODE

MCTSSAE

DEPARTURE

Daily

DURATION

12 Days

LOCATIONS

Argentina, Brazil, Peru, Machu Picchu



SOUTH AMERICA - SOUTH AMERICA EXPRESS

DAY 2: El Querandi Tango Show & Dinner

This evening you will be collected from your hotel to experience a Tango Show with dinner. This is an intimate & passionate tango show, housed in a cozy wood-panelled 19th century building with a colourful history as a meeting point for poets and students in the heart of Buenos Aires's historic centre. After being abandoned in the late 1970s, the bar was restored and reopened in 1992 as El Querandí Tango Hall. The show is directed by Claudio Campos, with musical arrangements by Ado Falasca, and it smoothly charts the history of Argentina's most authentic artistic expression from its origins to the modern day. The dinner is better than many, and at just over an hour long, the show is the perfect length. The three house singers, six dancers and four musicians put on a great show. Dinner will be served from 8.30pm followed by the show commencing at 10.00pm. Please note timings are subject to change and will be confirmed directly to you. On completion of the show, you will be taken to your hotel. Please note this is a small group tour.



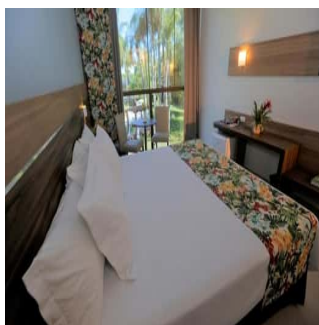
DAY 3: Transfer to the airport for onward destination

You will be collected from your hotel at the appropriate time and transferred to the airport for your onward flight. This service includes a driver only.



DAY 3: Arrival transfer in Iguazu

On arrival, please make your way through to the Arrivals Hall where our representative will be waiting for you to transfer you to your hotel. He/she will be holding a sign with your name on it. Should you not be able to locate them, please refer to the front of your itinerary for emergency contact details of our representative office. Please note this service is with driver only. *Please note the Iguazu Tourist Tax will now be charged on check out at all Iguazu hotels. The amount is currently ARS50 (USD3.40) per person per stay. Please note this tax is subject to change without prior notice.



TRIP CODE

MCTSSAE

DEPARTURE

Daily

DURATION

12 Days

LOCATIONS

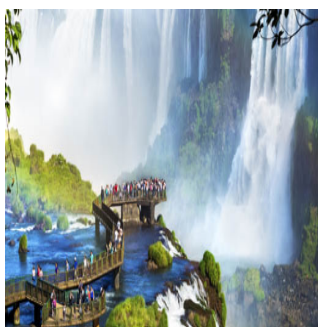
Argentina, Brazil, Peru, Machu Picchu



SOUTH AMERICA - SOUTH AMERICA EXPRESS

DAY 3: Iguazu

The spectacular Iguazu Falls that straddle the Argentine-Brazil border, are made up of 275 individual waterfalls lining a 2.7km wide horseshoe-shaped gorge. The Falls are located where the Iguazu River cascades over the edge of the Paraná Plateau. The Falls can be viewed from both the Argentinian and the Brazilian sides, the Brazilian side offering a broader, panoramic view, with the Argentinian side offering a series of catwalks that allow you to experience the Falls from close range.



DAY 4: Iguazu Falls - Argentinean Side

Early morning pick up from your hotel for your full day of exploring the Argentine side of the falls. This tour always starts early in order to beat the crowds and get the first train to the Devil's Throat. There are walkways over the islands which take you to a balcony over the falls and the most spectacular view of the entire Devil's Gorge. You will then have plenty of time to walk the 800 metres of paths on the upper circuit. These new suspended walkways are detached from the jungle surface so as to protect the fauna by preventing disruption of the natural trails. From this circuit you have a higher sight of the falls, providing you with a magnificent panoramic view. It takes around one hour to cover the upper circuit. The lower circuit contains 600 metres of walkways, also detached from the jungle floor, and has great views from below and around the falls. Once you have finished all the circuits, return to the visitor centre where your vehicles will be waiting to transfer you back to your hotel. Please note there is some degree of difficulty as the path includes many stairs, particularly on the lower circuit. National Park fee is included.



NO IMAGE
AVAILABLE

TRIP CODE

MCTSSAE

DEPARTURE

Daily

DURATION

12 Days

LOCATIONS

Argentina, Brazil, Peru, Machu Picchu



SOUTH AMERICA - SOUTH AMERICA EXPRESS

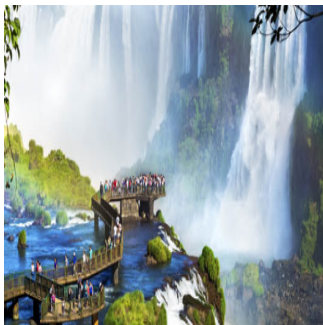
DAY 5: Iguazu Brazilian Falls and Transfer to Airport

After checking out, you will be collected from your hotel for your tour of the Brazilian Falls and transfer to the airport. See the falls from the Brazilian side of the border. After arriving at the visitor centre, we board buses for a tour of the park. Equipped with panoramic windows, the buses are designed to maximize your views of the falls, while the walkways and steps allow you to get up close to the spray. Views of the Floriania Falls, the Devil's Gorge Canyon and the Iguazu River are spectacular and are guaranteed to impress. National park fee included. After the tour you will be transferred to the airport in time to check in for your flight. This is a small group tour and transfer.



DAY 5: Arrival Transfer in Rio de Janeiro

On arrival, please make your way through to the Arrivals Hall where our representative will be waiting for you to transfer you to your hotel. He/she will be holding a sign with your name on it. Please note this service is with a driver only. Please note, once you arrival at your hotel you will receive a welcome pack, which will provide you with all the useful information you will need about your trip in Brazil.



TRIP CODE

MCTSSAE

DEPARTURE

Daily

DURATION

12 Days

LOCATIONS

Argentina, Brazil, Peru, Machu Picchu



SOUTH AMERICA - SOUTH AMERICA EXPRESS

DAY 6: Corcovado & Sugarloaf with Lunch

After departing from the hotel, the tour takes a scenic drive from Copacabana beach, continuing along Botafogo beach and passing the Palácio Guanabara, official residence of the State's Governor, on the way to Corcovado Hill (704m), and the greatest national icon - The Christ Redeemer of Rio de Janeiro. Here, you will have time to enjoy panoramic views of Rio and appreciate the giant statue, which was recently named as one of the seven new wonders of the world. From here, the tour continues to the district of Urca and the world-famous Sugar Loaf, where you will board the first cable car to the top of Urca Hill (215m), which offers spectacular views of Guanabara Bay. A second cable car will take you on to the Sugar Loaf (395m), giving you a chance to take in the spectacular 360-degree views of the city and surrounds. Upon descending from the Sugarloaf, we pass through the famous beaches of Copacabana and Ipanema en route to a traditional Brazilian BBQ lunch at a local Churrascaria (lunch is included - all beverages are at your own expense). Following lunch, the tour continues with a visit to the Maracanã Stadium (Bellini's statue and Hall of Fame. Entry into the stadium is not included) and a stop at the Sambadrome. While in the city's historic downtown area, you will have a chance to see the Duque de Caxias Palace, Itamaraty Palace, Tiradentes Square and Lapa Arches, followed by a visit to the Metropolitan Cathedral. From here the tour will also make a quick stop to visit the Selaron Stairs, an amazing urban work of art by the late Jorge Selaron. Returning to the hotel along Aterro do Flamengo, we pass by the Monument to the Fallen in World War II and the beaches of Flamengo and Botafogo. Lunch and all entrance fees (for Corcovado & Sugarloaf) are included.



TRIP CODE

MCTSSAE

DEPARTURE

Daily

DURATION

12 Days

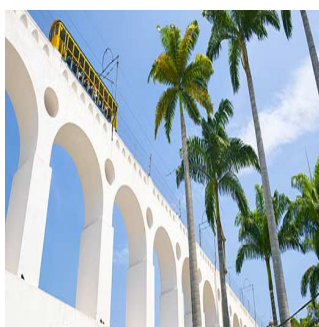
LOCATIONS

Argentina, Brazil, Peru, Machu Picchu



DAY 7: Rio de Janeiro - Free Day

Famed for its breathtaking setting, Rio is undoubtedly one of the most attractive cities in the world. Enjoy your day at leisure by exploring some of its remarkable sites or take the opportunity to relax on one of Rio's famous beaches such as Ipanema or Copacabana.



SOUTH AMERICA - SOUTH AMERICA EXPRESS

DAY 8: Transfer to the airport for onward destination

You will be collected from your hotel at the appropriate time and transferred to the airport for your onward flight.



DAY 8: Arrive Lima

This evening stay at Lima’s premier airport hotel Wyndham Costa del Sol Airport Hotel which is connected by a walkway to the terminal. Remainder of the day at leisure.



DAY 9: Depart Lima

Please make your way to the terminal for your departure flight. Please note check in time is 3 hours prior to scheduled departure time.



DAY 9: Arrival transfer in Cusco

On arrival, please make your way through to the Arrivals Hall where our representative will be waiting for you to transfer you to your hotel. He/she will be holding a sign with your name on it. Please note this service is with a driver only.



TRIP CODE

MCTSSAE

DEPARTURE

Daily

DURATION

12 Days

LOCATIONS

Argentina, Brazil, Peru, Machu Picchu



SOUTH AMERICA - SOUTH AMERICA EXPRESS

DAY 9: Cusco

Cusco, set at an altitude of 3,400 metres in the Peruvian Andes, was once the capital of the Inca Empire. It is known for its Spanish colonial architecture and Incan remains. Narrow, cobblestoned streets lined by Inca walls stretch out from the main plaza in every direction. Many of the colonial buildings were built on top of Incan foundations and the stonework is unparalleled in its precision and beauty.



DAY 9: Cusco - City Tour

You will be collected from your hotel for a sightseeing tour through Cusco, the heart of the Inca Empire. Visit the fascinating Qorikancha Temple of the Sun, the 12-Angled Rock and the Cathedral, built on the ruins of an Inca Palace. From here head to the archaeological remains located around the city, including the fortress of Sacsayhuaman, Qenqo (giant rock), the ancient site of Puca Pucara and finally the Water Temple of Tambomachay. On completion of your tour, you will be taken to your hotel. Included in your tour price is the BTG (Tourist Ticket of Cusco). Please note this is a small group tour.



DAY 10: Sacred Valley Tour

This morning you will be collected from your hotel for full day of exploring the Sacred Valley of the Incas. This fertile river valley was home to many important sites for the Incas, both strategic and religious. The first stop is the village of Pisac, with its famous market. The colonial village of Pisac sits at the base of the spectacular Pisac Ruins - a hilltop Inca citadel and fortress with impressive agricultural terracing. On market days Pisac comes alive with locals from nearby hillside villages in traditional dress selling local fruit and vegetables as well as handicrafts. There is free time to wander the colourful market stalls before a typical Andean lunch at a local restaurant. Continue your journey along the River Urubamba, to Ollantaytambo. The town, which is dominated by a giant Inca fortress, is perhaps the best surviving example of Inca town planning and was the scene of a rare Inca victory over the invading Spanish. Lunch is included.



TRIP CODE

MCTSSAE

DEPARTURE

Daily

DURATION

12 Days

LOCATIONS

Argentina, Brazil, Peru, Machu Picchu



SOUTH AMERICA - SOUTH AMERICA EXPRESS

DAY 10: Ollantaytambo to Aguas Calientes

Travel from Ollantaytambo to Machu Picchu in this comfortable train, and let your feet have rest. Enjoy an authentic Andean experience, while relaxing in modern and comfortable interior design illuminated by Latin American music. Comfortable seats with tables in front to share the journey with friends. *Due to limited space for luggage storage on trains, luggage restrictions apply: one bag or backpack (carry-on luggage) with a maximum weight of 5.0 kg/11 lb, measuring no more than 62 linear inches/157 linear cm (height + length + width)



DAY 11: Machu Picchu Guided Tour

Machu Picchu is a 15th century Inca site, located 2,430 metres above sea level on a mountain ridge above the Sacred Valley. It is the most famous of all Inca sites, but it was not until 1911 that it was brought to the world's attention by the American historian Hiram Bingham. The Incas abandoned the city just prior to Spanish colonisation, the city was never pillaged and as a result the ruins are still in fantastic condition. With its location on a dramatic ridgeline surrounded by sheer cliffs and the Urubamba River on three sides, the city of Machu Picchu is a remarkable place to visit. Machu Picchu was declared a UNESCO World Heritage Site in 1983 and in 2007 it was voted one of the new Seven Wonders of the World. The tour starts with a bus ride from Aguas Calientes to Machu Picchu. You will be astonished at your first view of Machu Picchu, a stunning display of ancient architecture with incredible surroundings. Enjoy a guided shared tour of the ruins. The shared tours will generally take circuit 1 which is the high/short route. You will explore the upper platforms of the site, where you can enjoy a panoramic view over the ruins. You will visit the Guardian's hut and then continue to the Puente del Inca (Incan Gate) and the urban sector of the citadel. Take the path on to the quarry and head on to the Casa Del Inca, Hall of Mirrors and Temple of the Condor. Return by bus to Aguas Calientes village. Please note that shared tours run with a maximum of 8 guests and 1 local expert guide. Please be aware that your tour of Machu Picchu does not include an entry permit to Huayna Picchu (the iconic hill behind the Machu Picchu ruins). If you want to climb Huayna Picchu then you need to pre-book your permit with at least 3 months in advance. Please contact your travel specialist if you would like to do this.



TRIP CODE

MCTSSAE

DEPARTURE

Daily

DURATION

12 Days

LOCATIONS

Argentina, Brazil, Peru, Machu Picchu



SOUTH AMERICA - SOUTH AMERICA EXPRESS

DAY 11: 360 Machu Picchu Train: Mapi - Ollanta PM

This afternoon travel by train from Aguas Calientes to Ollantaytambo. *Due to limited space for luggage storage on trains, luggage restrictions apply: one bag or backpack (carry-on luggage) with a maximum weight of 5.0 kg/11 lb, measuring no more than 62 linear inches/157 linear cm (height + length + width)



DAY 11: Private Transfer Ollantaytambo - Cusco

Transfer from Ollantaytambo train station in the Sacred Valley to Cusco.



DAY 12: Transfer to the airport for onward destination

You will be collected from your hotel at the appropriate time and transferred to the airport for your onward flight.



TRIP CODE

MCTSSAE

DEPARTURE

Daily

DURATION

12 Days

LOCATIONS

Argentina, Brazil, Peru, Machu Picchu



INCLUSIONS & DETAILS

Accommodation

Hotels

SOUTH AMERICA - SOUTH AMERICA EXPRESS

Inclusions	Airport transfers Internal flights Accommodation with breakfast Tours as detailed in itinerary Other meals where stated EXCLUSIONS: Tips, personal expenses International flights Visas Gratuities for tour guides and drivers Any items not mentioned in the itinerary Travel insurance
Difficulty Rating	3 Light Adventure (high altitude in some areas)
Single Surcharge	Contact us for more details
Notes	This itinerary can be also be done in the reverse. Contact us for more details.
Price Dependent upon	Season and availability

SUSTAINABILITY

Being environmentally accountable is a crucial part of our organisation. Chimu is currently striving towards using less paper, taking several initiatives to do so and tracking our progress along the way. Our goal: A paperless organisation. For this reason, all information given to you will be sent electronically. We encourage those who choose to travel with us to support our aspirations and actions and ask that you reconsider printing out documentation. To view these documents, you can download them to your iPad or portable computer before and during your trip.

Chimu is passionate and dedicated to sustainability measures and understands the crucial part sustainability plays within the tourism industry.

We use local guides and office staff to both maximise local employment opportunities and minimise carbon footprint. Local guides also ensure you benefit from the intimate knowledge, passion and culture of the country you're visiting. Our guides are all highly qualified (most with university degrees) or equip with many years of experience and are paid above the standard wage. Whether it be our knowledgeable local guides, locally produced meals or the transport on tour, we do not use imported goods when local products are available. We aim to minimise our impact on the environment and give as much back as possible to the communities we work in.

While visiting the many national parks, heritage sites, museums and landmarks our travellers are encouraged to explore whilst remaining culturally aware and sensitive. We further encourage you to buy appropriate souvenirs and discourage the buying of anything wrongfully made or taken from the environment i.e. shells and endangered species products. Information on how you can be environmentally conscious, and travel responsibly will be made available in our Travellers Guides and provided during your

TRIP CODE

MCTSSAE

DEPARTURE

Daily

DURATION

12 Days

LOCATIONS

Argentina, Brazil, Peru, Machu Picchu



SOUTH AMERICA - SOUTH AMERICA EXPRESS

travels by guides and staff.

For more information on our sustainability policies, including how we are striving towards being a paperless organisation, click [HERE](#)

TRIP CODE
MCTSSAE
DEPARTURE
Daily
DURATION
12 Days
LOCATIONS
Argentina, Brazil, Peru, Machu Picchu
