

## THE ARCTIC - ATLANTIC CANADA EXPLORER | OCEAN ENDEAVOUR



### INTRODUCTION

Sail into spring on Canada's east coast and explore Newfoundland, Nova Scotia, New Brunswick and Saint-Pierre. Your vessel for 11 days will be the spacious and comfortable Ocean Endeavour. The diverse cultures that have influenced this area include Mi'kmaq, Acadian, English, Scottish, Irish and French and wildlife possibilities include marine mammals, seabirds and wild horses. Those with an interest in history can delve into the diverse past of Atlantic Canada. As the Gulf Stream warms up this time of year so does the scenery and you will witness it via on shore excursions from the expedition ship.

### Special Guest Margaret Atwood

Since her childhood spent in the woods of Northern Ontario and Quebec, Margaret has been a passionate conservationist and a tireless advocate for birds. A deep believer in the power of getting people out into nature, Margaret has been travelling as a staff member with Adventure Canada for twenty years. Join her on this voyage of discovery.

### ITINERARY

#### DAY 1: St Johns

Welcome to St. John's—the vibrant capital of Newfoundland and Labrador. Sailing out of the historic port, Signal Hill keeps watch as we exit the world-famous narrows. The charming houses of The Battery are always a hit with shutterbugs. Watch for icebergs, whales and seabirds as we sail!



#### TRIP CODE

ACADACA

#### DEPARTURE

23/06/2022

#### DURATION

12 Days

#### LOCATIONS

Canadian Arctic



# THE ARCTIC - ATLANTIC CANADA EXPLORER | OCEAN ENDEAVOUR

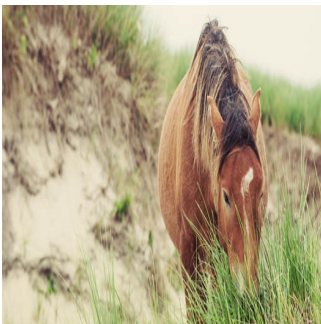
## DAY 2: At Sea

We'll be in full-on learning mode as our expedition team shares the fascinating history and ecology of Sable Island. On deck, we'll be watching for marine mammals and seabirds in the rich waters of the northwest Atlantic.



## DAY 3: Sable Island - Day 3 to 4

A sandbar as long as Manhattan—but only about a kilometre wide—Sable Island is home to many varieties of birds, including the Ispwich Sparrow; the largest grey seal colony in the world; and the world-famous Sable Island horses. Unique weather conditions prevail at Sable Island. We'll maximize opportunities to walk the dunes, cruise the shores and view the wildlife. We'll also learn first-hand about Sable Island's fascinating human history.



## DAY 5: The Gully Marine Protected Area

The Gully is a Marine Protected Area where the sea floor plunges two and a half kilometres into a submarine valley. The Gully is one of the most prominent undersea features in eastern Canada. Significant coral communities make for a diversity of both shallow and deep-water fish, which draws whales and dolphins. Join our on board researchers to appreciate the abundance of marine life!



## DAY 6: Fortress of Louisbourg

Built by the French in 1720, the fortifications at Louisbourg were captured by the British in 1745, later returned to the French, captured again in 1758 and then destroyed. Reconstructed in the 1960s and 1970s, the Fortress of Louisbourg National Historic Site offers a telling glimpse into military colonial Canada.



### TRIP CODE

ACADACA

### DEPARTURE

23/06/2022

### DURATION

12 Days

### LOCATIONS

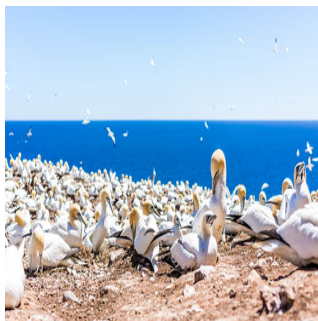
Canadian Arctic



## THE ARCTIC - ATLANTIC CANADA EXPLORER | OCEAN ENDEAVOUR

### DAY 7: Bird Island and Cape Breton

Conditions permitting, we'll enjoy a Zodiac cruise at the Bird Islands, just off Cape Breton's coast near Cape Dauphin. This critical seabird nesting and breeding area includes the largest colony of Great Cormorants in Canada. We'll also be looking for Black-legged Kittiwakes, Razorbills and Atlantic Puffins, Black Guillemots and perhaps Leach's Storm-petrels. Cape Breton island is a bastion of Gaelic music and culture, "more Scots than the Scots." Its rugged highlands and wind-swept coasts are home to the world-famous Cabot Trail and Cape Breton Highlands National Park.



### DAY 8: Cheticamp

Today we call in at the fishing village of Cheticamp, on the western shore of Cape Breton Island. A busy fishing harbour, rug-hooking museum, shops and restaurants offer a taste of Acadian heritage. Nearby Cape Breton Highlands National Park is world-renowned for scenery and wildlife. If weather permits, we'll hike the spectacular Skyline Trail.



### DAY 9: Prince Edward Island

Historic Charlottetown, Prince Edward Island is known as the Birthplace of Confederation. A charming town and the capital of Canada's smallest province, Charlottetown offers access to all of PEI within a relatively short drive. Optional excursions will include a visit to Green Gables, —fictional home of the famous Anne—, and Lennox Island Mi'kmaq First Nation.



### DAY 10: South Coast Newfoundland

The wild and windswept coast of southern Newfoundland is home to a few remaining outpost communities. Visits here are often a highlight of our trips. There are many choices of unique bays and coves to explore via Zodiac or land excursions. Along the coast, the geology is outstanding, and the plant life is gorgeous. We'll be on the watch for wildlife too. We'll make the most of every chance to explore this beautiful and remote coast.



#### TRIP CODE

ACADACA

#### DEPARTURE

23/06/2022

#### DURATION

12 Days

#### LOCATIONS

Canadian Arctic





THE ARCTIC - ATLANTIC CANADA EXPLORER | OCEAN ENDEAVOUR

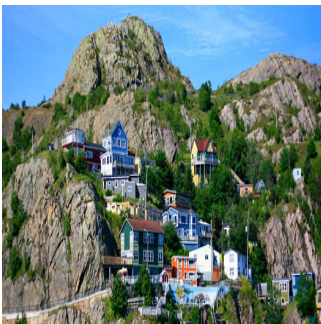
DAY 11: Saint-Pierre, France

Just off the shores of Newfoundland lie the islands of Saint-Pierre and Miquelon—an official territory of France. The colourful town of Saint-Pierre makes a charming finale to our trip. Winding streets with shops, houses, and cafés bring a taste of Europe to the east coast of North America.



DAY 12: Disembarkation in St John's

On the final day of our expedition, we sail back though the picturesque Narrows and into St. John’s harbour. We will say our farewells in North America's oldest city.



TRIP CODE

ACADACA

DEPARTURE

23/06/2022

DURATION

12 Days

LOCATIONS

Canadian Arctic



INCLUSIONS & DETAILS

|                   |  |
|-------------------|--|
| Accommodation     | Standard   |
| Inclusions        | <p><b>Inclusions</b></p> <p>Cabin accommodation on board the ship</p> <p>All onboard meals</p> <p>One way charter flight St John's to Saint- Pierre</p> <p>Applicable taxes and credit card fees</p> <p>Complimentary expedition jacket</p> <p>Special access permits and entry fees</p> <p>Port fees</p> <p>All zodiac excursions and interactive workshops</p> <p><b>Exclusions</b></p> <p>USD\$528 FUEL SURCHAGRE</p> <p>Gratuities</p> <p>Mandatory medical evacuation insurance</p> <p>Additional expenses due to delays or itinerary changes</p> <p>Pre and post trip accommodation.</p> |
| Difficulty Rating | 2 (light adventure)  |
| Single Surcharge  | Please Note: Category 3 to 7 cabins have no single supplement. Contact us for more details.  |

## THE ARCTIC - ATLANTIC CANADA EXPLORER | OCEAN ENDEAVOUR

### Notes

**2022 DEPARTURE:** \*plus \$528 USD fuel surcharge (\$44 per day)  
\*

### Special Guest Margaret Atwood

Since her childhood spent in the woods of Northern Ontario and Quebec, Margaret has been a passionate conservationist and a tireless advocate for birds. A deep believer in the power of getting people out into nature, Margaret has been travelling as a staff member with Adventure Canada for twenty years. Join her on this voyage of discovery.

**Price Dependent upon** Season and availability

### TRIP CODE

ACADACA

### DEPARTURE

23/06/2022

### DURATION

12 Days

### LOCATIONS

Canadian Arctic

## SUSTAINABILITY

Being environmentally accountable is a crucial part of our organisation. Chimu is currently striving towards using less paper, taking several initiatives to do so and tracking our progress along the way. Our goal: A paperless organisation. For this reason, all information given to you will be sent electronically. We encourage those who choose to travel with us to support our aspirations and actions and ask that you reconsider printing out documentation. To view these documents, you can download them to your iPad or portable computer before and during your trip.

Chimu is passionate and dedicated to sustainability measures and understands the crucial part sustainability plays within the tourism industry.

We use local guides and office staff to both maximise local employment opportunities and minimise carbon footprint. Local guides also ensure you benefit from the intimate knowledge, passion and culture of the country you're visiting. Our guides are all highly qualified (most with university degrees) or equip with many years of experience and are paid above the standard wage. Whether it be our knowledgeable local guides, locally produced meals or the transport on tour, we do not use imported goods when local products are available. We aim to minimise our impact on the environment and give as much back as possible to the communities we work in.

The Ocean Endeavour in the Arctic works closely with the First Nations communities by direct employment and is a part of a Discovery Fund. Every customer contributes directly to the Fund when they purchase a trip to the Arctic. The Fund covers issues like habitat enhancement, youth outreach, community support and charity projects. The Scientist-in-residence program offers spacem time and resources aboard The Ocean Endeavour for practicing scientists and researchers. Passenger contributions to the citizen science program is also facilitated onboard. While visiting the many national parks, heritage sites, museums and landmarks our travellers are encouraged to explore whilst remaining culturally aware and sensitive. We further encourage you to buy appropriate souvenirs and discourage the buying of anything wrongfully made or taken from the environment i.e. shells and endangered species products. Information on how you can be environmentally conscious, and travel responsibly will be made available in our Travellers Guides and provided during your travels by guides and staff.



## THE ARCTIC - ATLANTIC CANADA EXPLORER | OCEAN ENDEAVOUR

For more information on our sustainability policies, including how we are striving towards being a paperless organisation, click [HERE](#)

### TRIP CODE

ACADACA

### DEPARTURE

23/06/2022

### DURATION

12 Days

### LOCATIONS

Canadian Arctic

