

## THE ARCTIC - OUT OF THE NORTHWEST PASSAGE | OCEAN ENDEAVOUR



### INTRODUCTION

This is one of the world's most incredible Arctic voyages. Starting with a flight from Calgary, the cruise begins in Kugluktuk, Nunavut, Canada. This route takes you out of the Northwest Passage. You will cruise through glaciers, fjords, icebergs, historic sites and epic views. Wildlife viewing is a huge highlight with the possibility to see marine mammals, polar bears and seabirds. This 17-day expedition is aboard the comfortable Ocean Endeavour. Excursions include hiking, photography, birdwatching, visiting Nunavut's communities and there will be educational lectures from the ship's expert expedition team. This voyage will take you to the top of the world, ending in Kangerlussuaq, Greenland before your flight to Toronto Canada.

Mandatory charter flight information and cost. **2024 DEPARTURE:**

-Northbound Charter Flight: Yellowknife, NT, Canada to Kugluktuk (Coppermine), NU, Canada. Early-morning departure. **Price: \$1,320 USD**

-Southbound Charter Flight: Kangerlussuaq, Greenland to Toronto, ON, Canada. Evening arrival. **Price: \$1,375 USD**

**PLEASE NOTE: Pricing is subject to change and availability at the time of booking. Cabins are subject to availability and currency fluctuations. Contact us for more information.**

### ITINERARY

#### TRIP CODE

ACADOTNP

#### DEPARTURE

12/09/2024

#### DURATION

17 Days

#### LOCATIONS

Canadian Arctic, Greenland



# THE ARCTIC - OUT OF THE NORTHWEST PASSAGE | OCEAN ENDEAVOUR

## DAY 1: Yellowknife - Kugluktuk

After your charter flight from Yellowknife, NT, you'll transfer to the Ocean Endeavour by Zodiac. Begin your journey in Kugluktuk, the westernmost community in Nunavut, located at the mouth of the Coppermine River. Known for many years as Coppermine, the community reverted to its original Inuinnaqtun name—meaning “place of moving waters”—on January 1st, 1996. Iqaluktuuttiaq (Cambridge Bay), NU is an alternate embarkation point that may be used based on sea, ice, and weather conditions. PLEASE NOTE: We highly recommend you spend the night in Yellowknife before your charter flight.



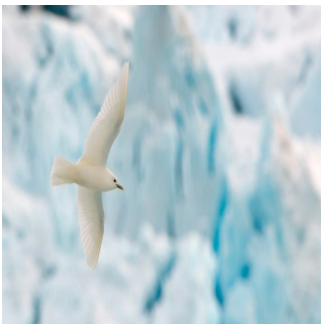
## DAY 2: Kitikmeot Region - Day 2 to 4

The Kitikmeot Region consists of parts of Victoria Island, the adjacent part of the mainland as far as the Boothia Peninsula, King William Island, and the southern portion of Prince of Wales Island. Its regional seat is Iqaluktuuttiaq (Cambridge Bay), though it also contains five other hamlets (including Uqsuqtuuq and Kugluktuk). Recently, the Kitikmeot Region has been in the news since the finding of the lost ships of the Franklin Expedition in its waters. It is Nunavut’s least-populated region, though wildlife abounds here both in the sea and on land.



## DAY 5: Prince Regent Inlet

This passage marks an area rich in marine and avian life. Thick-billed Murres, Ivory Gulls, beluga, narwhal and bowhead whales reside in the ice-strewn waters. In addition to abundant wildlife, we'll delve deeper into the exploration of the Northwest Passage and mercantile efforts of the Hudson's Bay Company.



### TRIP CODE

ACADOTNP

### DEPARTURE

12/09/2024

### DURATION

17 Days

### LOCATIONS

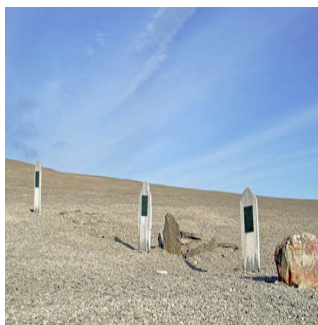
Canadian Arctic, Greenland



## THE ARCTIC - OUT OF THE NORTHWEST PASSAGE | OCEAN ENDEAVOUR

### DAY 6: Beechey Island

In 1845, Sir John Franklin set out from England with HMS Erebus and Terror, attempting to sail through the Northwest Passage. Franklin's party overwintered at Beechey Island where three of his men died. Numerous search parties later used Beechey as a depot and rendezvous. Amundsen, Bernier, and Larsen visited Beechey. Thomas Morgan of HMS Investigator was buried there in 1854 alongside Franklin's men. The graves and the ruins of Northumberland House are a haunting memorial.



### DAY 7: Lancaster Sound - Day 7 to 8

We will spend the day exploring the ocean wilderness of Tallurutiup Imanga (Lancaster Sound). In August of 2017, this enormous body of water was declared a National Marine Conservation Area. Large populations of marine mammals, including narwhal, beluga and bowhead whales transit and feed in this area. There is a great selection of landing sites available, depending on weather, wildlife, and sea conditions.



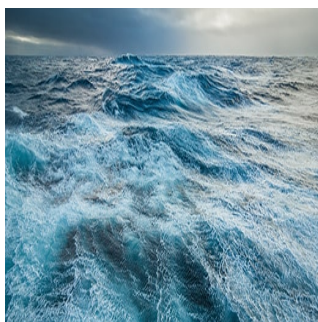
### DAY 9: Ajuittuq (Grise Fiord)

Ajuittuq means 'place that never thaws.' 1,150 kilometres above the Arctic Circle, Canada's northernmost "civilian" community originated in the Cold War; in 1953, residents were relocated to Ajuittuq to boost Canadian sovereignty. In 2016, the census placed the population at 129. Our activities will centre in the village where we will have a chance to meet members of the community, learn about their way of life, and hear their poignant stories.



### DAY 10: Smith Sound - Day 10 to 11

Smith Sound served as the main route for explorers and adventurers searching for the North Pole. Adolphus Greely, Sir George Nares, and Elisha Kent Kane all travelled these waters with varying degrees of success. Between forty-eight and seventy-two kilometres wide and eighty-eight kilometres long, Smith Sound divides Ellesmere Island from Greenland. Here, the sea ice provided an ancient Inuit travel route. Optimal sea ice conditions in Smith Sound can also make for excellent wildlife viewing.



#### TRIP CODE

ACADOTNP

#### DEPARTURE

12/09/2024

#### DURATION

17 Days

#### LOCATIONS

Canadian Arctic, Greenland



# THE ARCTIC - OUT OF THE NORTHWEST PASSAGE | OCEAN ENDEAVOUR

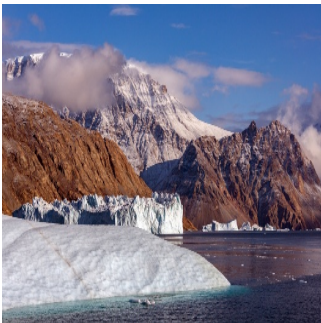
## DAY 12: At Sea

On this exploration day, we'll be making the most of what the wind, weather and wildlife have to offer. Our expedition staff will scan for polar bears, walrus, whales, seals, and seabirds as we go.



## DAY 13: Northwest Greenland - Day 13 to 14

We will explore stunning fjords that line the coast. Glaciers and icebergs abound here. In true expedition style, we will seek opportunities to hike, explore, and view wildlife as conditions allow.



## DAY 15: Ilulissat

Ilulissat translates literally into “iceberg”, an apt name for this site at the mouth of the Ilulissat Icefjord—a UNESCO World Heritage Site. The icefjord is the outlet of the Sermeq Kujalleq Glacier, source of many of the icebergs in the north Atlantic. Here, we will cruise in our fleet of Zodiacs to appreciate the icebergs. And we'll visit the bustling town of Ilulissat, with its museums, cafes, craft shops, and busy fishing harbour.



## DAY 16: Itilleq Fjord

The west Greenland coastline is a rich mixture of fishing communities, many islands and complex coastal waterways. The waters are relatively warm here, due to the West Greenland current and the more southerly location. This makes for lush vegetation. As we enter the Arctic autumn, the tundra foliage will be in gorgeous colour. We will be making an expedition stop here to explore the landscape of wild Greenland.



### TRIP CODE

ACADOTNP

### DEPARTURE

12/09/2024

### DURATION

17 Days

### LOCATIONS

Canadian Arctic, Greenland



THE ARCTIC - OUT OF THE NORTHWEST PASSAGE | OCEAN ENDEAVOUR

DAY 17: Kangerlussuaq - Toronto

Sondre Stromfjord is one of the longest fjords in the world and boasts 168 kilometres of superb scenery. We end our adventure by sailing up this dramatic fjord where we'll have a good chance of experiencing the majesty of the Northern Lights. Kangerlussuaq, the town at its eastern head, is a former US Air Force base and Greenland’s primary flight hub. Here you will disembark the Ocean Endeavour and transfer to the airport for your return charter flight to Toronto.



TRIP CODE

ACADOTNP

DEPARTURE

12/09/2024

DURATION

17 Days

LOCATIONS

Canadian Arctic, Greenland


INCLUSIONS & DETAILS

Accommodation	Cabin Onboard a Ship
---------------	----------------------



THE ARCTIC - OUT OF THE NORTHWEST PASSAGE | OCEAN ENDEAVOUR

Inclusions	<b>INCLUSIONS</b> Cabin accommodation on board the Ocean Endeavour Applicable taxes and Credit card fees Complimentary Expedition jacket (Ocean Endeavour only) Contribution to Adventure Canada's Discovery Fund Special access permits, entry and park fees Team of expedition staff Guided activities Sightseeing and community visits All Zodiac excursions Port fees Pre-departure materials Educational program Interactive workshops Evening entertainment All shipboard meals
	<b>EXCLUSIONS</b> Mandatory Charter flights (please see notes for more details) Commercial flights Program Enhancements/optional excursions Airport transfers, taxes and excess baggage charges unless specified Meals other than those specified in the pre-departure information Pre or post cruise travel expenses Visa (if applicable) and passport fees Travel insurance (compulsory) Fuel surcharge may be applied to all bookings Paid adventure options and all personal expenses Tobacco, alcoholic or beverages (other than coffee and tea) Miscellaneous extras Laundry and communication charges on board Gratuities for Expedition team and crew (recommended US\$15 per person per day) Personal expenses Mandatory medical evacuation insurance Additional expenses in the event of delays or itinerary changes Pre- & post-trip hotel accommodation Possible fuel surcharges and administrative fees
	<b>Difficulty Rating</b> 2 (light adventure)
	<b>Single Surcharge</b> Please Note: Category 3 to 7 cabins have no single supplement. Contact us for more details. Subject to limited availability.

<b>TRIP CODE</b>
ACADOTNP
<b>DEPARTURE</b>
12/09/2024
<b>DURATION</b>
17 Days
<b>LOCATIONS</b>
Canadian Arctic, Greenland


## THE ARCTIC - OUT OF THE NORTHWEST PASSAGE | OCEAN ENDEAVOUR

### Notes

Mandatory charter flight information and cost **2024**

#### DEPARTURE:

- Northbound Charter Flight: Yellowknife, NT, Canada to Kugluktuk (Coppermine), NU, Canada. Early-morning departure. **Price: \$1,320 USD**
- Southbound Charter Flight: Kangerlussuaq, Greenland to Toronto, ON, Canada. Evening arrival. **Price: \$1,375 USD**

Prices are based on per person, twin share\* (unless otherwise stated for triple/quad cabins)  
Prices are correct at time of publishing but are subject to change at any time.  
Itinerary is subject to change depending on weather and ice conditions

### Price Dependent upon

Departure date, fuel surcharges, cabin category, currency fluctuations, seasonality and availability.

### TRIP CODE

ACADOTNP

### DEPARTURE

12/09/2024

### DURATION

17 Days

### LOCATIONS

Canadian Arctic, Greenland



## SUSTAINABILITY

Being environmentally accountable is a crucial part of our organisation. Chimu is currently striving towards using less paper, taking several initiatives to do so and tracking our progress along the way. Our goal: A paperless organisation. For this reason, all information given to you will be sent electronically. We encourage those who choose to travel with us to support our aspirations and actions and ask that you reconsider printing out documentation. To view these documents, you can download them to your iPad or portable computer before and during your trip.

Chimu is passionate and dedicated to sustainability measures and understands the crucial part sustainability plays within the tourism industry.

We use local guides and office staff to both maximise local employment opportunities and minimise carbon footprint. Local guides also ensure you benefit from the intimate knowledge, passion and culture of the country you're visiting. Our guides are all highly qualified (most with university degrees) or equip with many years of experience and are paid above the standard wage. Whether it be our knowledgeable local guides, locally produced meals or the transport on tour, we do not use imported goods when local products are available. We aim to minimise our impact on the environment and give as much back as possible to the communities we work in.

The Ocean Endeavour in the Arctic works closely with the First Nations communities by direct employment and is a part of a Discovery Fund. Every customer contributes directly to the Fund when they purchase a trip to the Arctic. The Fund covers issues like habitat enhancement, youth outreach, community support and charity projects. The Scientist-in-residence program offers spacem time and resources aboard The Ocean Endeavour for practicing scientists and researchers. Passenger contributions to the citizen science program is also facilitated onboard. While visiting the many national parks, heritage sites, museums and landmarks our travellers are encouraged to explore whilst remaining culturally aware and sensitive. We further encourage you to buy

# THE ARCTIC - OUT OF THE NORTHWEST PASSAGE | OCEAN ENDEAVOUR

appropriate souvenirs and discourage the buying of anything wrongfully made or taken from the environment i.e. shells and endangered species products. Information on how you can be environmentally conscious, and travel responsibly will be made available in our Travellers Guides and provided during your travels by guides and staff.

For more information on our sustainability policies, including how we are striving towards being a paperless organisation, click [HERE](#)

TRIP CODE
ACADOTNP
DEPARTURE
12/09/2024
DURATION
17 Days
LOCATIONS
Canadian Arctic, Greenland
