

GREENLAND - UNDER THE NORTHERN LIGHTS | OCEAN EXPLORER




INTRODUCTION

Cruise along Greenland's remote northern coast and the Vestfjords of Iceland on this incredible cruise to some of the last unspoiled wilderness on Earth. Discover the largest fjord systems on Earth, rugged landscapes and iconic arctic wildlife - all whilst having the the unique opportunity to view the spectacular Northern Lights. At Ittqortoormiit you will have the opportunity to be immersed in local Arctic culture before marvelling at massive icebergs and towering bird cliffs.

**Current Discounts, promotions and pricing are available until 04 Feb 2024, however discounts may be withdrawn or changed at any time and are subject to availability on selected cabins and departure dates. Some current in market offers may be combinable and Shackleton Club Past Passenger and multi trip discounts may be applied subject to confirmation at the time of booking. Prices are subject to change based on currency fluctuations, fuel surcharges, and other external factors. No discount applies to any transfer packages, additional activities or pre/post services. The advertised prices may also include a 'Pay in full at time of booking' which is a 5-10% early payment discount, which requires the full balance to be paid at the time of booking to apply. Further conditions may apply, [contact us](#) for more information.*

ITINERARY

TRIP CODE
ACQEUNA
DEPARTURE
20/09/2024
DURATION
14 Days
LOCATIONS
Iceland and Greenland


GREENLAND - UNDER THE NORTHERN LIGHTS | OCEAN EXPLORER

DAY 1: Arrive in Reykjavik, Iceland

Arrive in the Icelandic capital in the morning and make your way to your included hotel. You will have the day to explore the city on your own.



DAY 2: Embarkation Day in Reykjavik

This afternoon, you'll board your vessel and begin your expedition. Get ready for a great adventure ahead!



DAY 3: Exploring the Vestfjords

Each region of Iceland has its own appeal for nature, bird and history lovers, and the little-visited Vestfjords (Westfjords), where the land meets the sea in the most dramatic fashion, is no exception. Exploring this rugged peninsula at the country's remote north western tip offers awe-inspiring vistas of mountains, fjords and towering cliffs. If we're lucky and conditions allow, we might cruise along Látrabjarg, Europe's largest bird cliff, teeming with puffins, razorbills, guillemots and more. Another possible destination is the quaint island of Flatey, where a replica of Iceland's largest medieval manuscript, Flateyjarbók, can be viewed in the library. The church here features murals symbolizing life on the island, including one of Jesus wearing a classic Icelandic sweater.



TRIP CODE

ACQEUNA

DEPARTURE

20/09/2024

DURATION

14 Days

LOCATIONS

Iceland and Greenland



GREENLAND - UNDER THE NORTHERN LIGHTS | OCEAN EXPLORER

DAY 4: At Sea

As we cruise north across the Denmark Strait, your Expedition Team will prepare you for the adventures that await. Learn about the storied history and politics of the Arctic, it's fascinating wildlife, geology, ecology and climate, and the incredible sights you will soon explore. The team will also search for the seabirds soaring around your ship, as well as the whales that frequent the waters here.



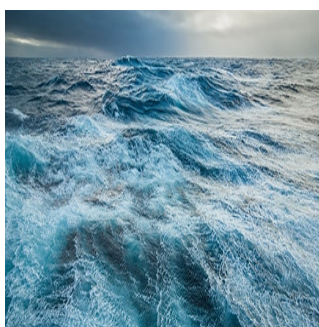
DAY 5: Exploring Northwest Greenland - Day 5 to 12

During your tour of Greenland's remote northeast coast, you'll enjoy Zodiac cruises and shore visits to several locations. We'll also keep an eye out for grazing muskoxen, as 40 percent of the world's muskoxen population lives in Northeast Greenland National Park. Sailing through spectacular Scoresbysund, the birthplace of many icebergs, you'll immediately see why some say it's the most beautiful fjord system on the planet. Sites such as Frederiksdal and Sydkap offer opportunities to explore the colourful tundra and the remains of ancient Thule settlements. At the entrance of the sound is East Greenland's most northerly community, Ittoqqortoormiit, where you may spend time interacting with the Inuit people and learning about their way of life. You may also have a chance to see the northern lights here if the skies are clear. Deeper in the sound, Røde Øya offers a picturesque locale for admiring the beauty of sky-blue bergs set against striking red sandstone cliffs. Magnificent vistas also await at Kong Oscar Fjord, with possible landings at Ella Øya, renowned for its rugged cliffs and ice-choked waters, and flower-rich Botanikerbugt, on Ymer Øya.



DAY 13: At Sea

As your arctic adventure winds down, take in a presentation by our onboard experts, share your photos, sip an icy cocktail in the bar or watch a movie—there are many activities during your time at sea. Your Expedition Team will also be on hand to answer any questions and point out wildlife.



TRIP CODE

ACQEUNA

DEPARTURE

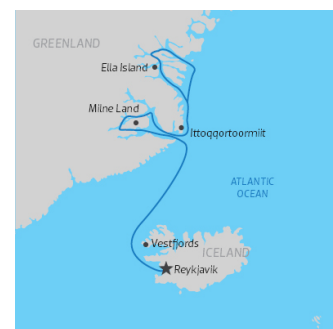
20/09/2024

DURATION

14 Days

LOCATIONS

Iceland and Greenland



GREENLAND - UNDER THE NORTHERN LIGHTS | OCEAN EXPLORER

DAY 14: Depart Reykjavik, Iceland

You'll disembark in Reykjavik, Iceland's capital, at the end of your journey. If you have booked post-expedition accommodation, we provide a transfer to a central downtown location.



TRIP CODE

ACQEUNA

DEPARTURE

20/09/2024

DURATION

14 Days

LOCATIONS

Iceland and Greenland



INCLUSIONS & DETAILS

Accommodation	Cabin on board ship
Inclusions	<div>INCLUSIONS</div> <div>Cabin accommodation on board vessel All meals & snacks whilst on board One night pre voyage in Reykjavik including breakfast Guiding and lectures by experienced expedition crew All scheduled landings and excursions by zodiac Landing fees Pre and post cruise and ferry transfers</div> <div>EXCLUSIONS</div> <div>International Flights All items of a personal nature Customary gratuities for staff/crew Any pre or post cruise travel extensions Travel insurance</div>
Difficulty Rating	2 (light adventure)
Single Surcharge	Available on request. Please contact us for more information.
Notes	Please note this itinerary may be subject to change depending on weather and sea conditions.
Price Dependent upon	Departure date, seasonality and availability.

SUSTAINABILITY

Being environmentally accountable is a crucial part of our organisation. Chimu is currently striving towards using less paper, taking several initiatives to do so and

GREENLAND - UNDER THE NORTHERN LIGHTS | OCEAN EXPLORER

tracking our progress along the way. Our goal: A paperless organisation. For this reason, all information given to you will be sent electronically. We encourage those who choose to travel with us to support our aspirations and actions and ask that you reconsider printing out documentation. To view these documents, you can download them to your iPad or portable computer before and during your trip.

Chimu is passionate and dedicated to sustainability measures and understands the crucial part sustainability plays within the tourism industry.

We use local guides and office staff to both maximise local employment opportunities and minimise carbon footprint. Local guides also ensure you benefit from the intimate knowledge, passion and culture of the country you're visiting. Our guides are all highly qualified (most with university degrees) or equip with many years of experience and are paid above the standard wage. Whether it be our knowledgeable local guides, locally produced meals or the transport on tour, we do not use imported goods when local products are available. We aim to minimise our impact on the environment and give as much back as possible to the communities we work in.

Quark expeditions undertake a number of sustainable initiatives dedicated to environmental protection and education. Charities supported include Polar Bears International, which undertakes conservation efforts to save the endangered species and 'Clean up Svalbard' which aids in collecting refuse from beaches and wilderness areas on the island. Technical elements on vessels include the use of Marine Gas Oil (MGO) a low emission factor fuel, as well as the use of recyclable water bottles and acid-free paper. While visiting the many national parks, heritage sites, museums and landmarks our travellers are encouraged to explore whilst remaining culturally aware and sensitive. We further encourage you to buy appropriate souvenirs and discourage the buying of anything wrongfully made or taken from the environment i.e. shells and endangered species products. Information on how you can be environmentally conscious, and travel responsibly will be made available in our Travellers Guides and provided during your travels by guides and staff.

For more information on our sustainability policies, including how we are striving towards being a paperless organisation, click [HERE](#)

TRIP CODE

ACQEUNA

DEPARTURE

20/09/2024

DURATION

14 Days

LOCATIONS

Iceland and Greenland

