

SOUTH AMERICA - SIGNATURE GALAPAGOS EXPRESS



INTRODUCTION

Join this 8 day, superior experience of Quito and the Galapagos Islands. The cruise offers all the creature comforts of superior accommodation onboard the MC Seaman Journey, a luxurious sixteen passenger catamaran, and three nights accommodation in Quito at the boutique five star Illa Experience hotel.

You will enjoy a few days sightseeing Quito from the hotel, which is centrally located in the city's old town, before boarding your cruise and experiencing the spectacular scenery, natural wonders and incredible flora and fauna of the Galapagos Islands. There, you will observe Galapagos tortoises in their habitat, snorkel the white coral beach of Cerro Brulo, observe sea lions and sharks at Espanola Island and spot blue-footed boobies and albatrosses at Suarez Point.

Every day of this express South American tour is an adventure as you encounter the fascinating and colourful creatures who call these islands their home.

> Add extensions to make it yours!

[How our signature tours work - Pick your Signature tour & add extensions to make it yours!](#)

This superior itinerary includes accommodation onboard the Seaman Journey - a luxurious 16 passenger catamaran and three nights in Quito staying the Illa Experience hotel, a boutique 5 star hotel located in the city's old town, this hotel is the perfect base to explore the best sights and attractions the city has to offer.

ITINERARY

TRIP CODE

ECSJGALB

DEPARTURE

Selected Fridays

DURATION

8 Days

LOCATIONS

Quito, Ecuador, Galapagos Islands



SOUTH AMERICA - SIGNATURE GALAPAGOS EXPRESS

DAY 1: Arrive in Quito

Welcome to Quito, Ecuador, a City declared a UNESCO World Cultural Heritage Site in 1978. You will be transferred from the airport to your hotel which sits nestled in the Andean foothills, 2,850 metres above sea level. The city is known for its stunning colonial architecture, artwork and amazing snow-capped mountain backdrop.



DAY 2: Quito

You will tour the bustling streets, charming squares and majestic churches of Quito city and its old town before venturing into the city's surrounds. There, we will head 25km north and visit the Equatorial Monument. It marks the exact middle of the World, Latitude 0°, where you can stand with one foot on each side of the hemisphere. The surrounding volcanic scenery is stunning and you can choose to visit either the Ethnographic Museum or the Intinan Museum, both located near the site of the monument. (B,L)



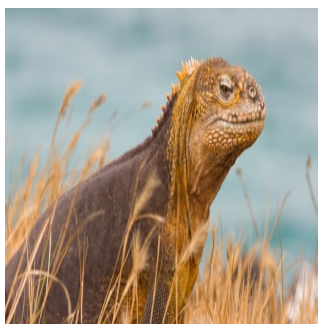
DAY 3: Cotopaxi National Park Excursion

Today you will head south from Quito to visit Cotopaxi National Park. Cotopaxi is the highest active volcano in the world. Despite the altitude, the park is home to numerous birds and varied plant life. Weather permitting, there are spectacular views from the north face of the mountain. The surrounding scenery includes volcanoes like Pasochoa, Ruminahui and Sincholagua. You will also have the opportunity to visit a local indigenous market. (B)



DAY 4: Fly to Galapagos Islands

Fly from Quito to the Galapagos. On arrival you will meet your naturalist guides who will collect your luggage and escort you by bus to the harbour to board the MC Galapagos Seaman Journey. In the afternoon you will visit the San Cristobal Interpretation Centre to learn about the history of the islands, local conservation efforts and the natural history. (B,L,D)



TRIP CODE

ECSJGALB

DEPARTURE

Selected Fridays

DURATION

8 Days

LOCATIONS

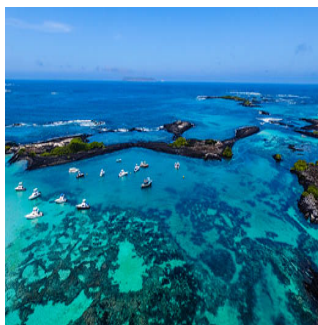
Quito, Ecuador, Galapagos Islands



SOUTH AMERICA - SIGNATURE GALAPAGOS EXPRESS

DAY 5: San Cristobal

Today begins with a trip to Galapaguera, a breeding station and sanctuary for the giant Galapagos tortoise. The species is under threat and this centre provides a safe place to observe them in their natural habitat. This afternoon, head to the beautiful white coral sand beach of Cerro Brujo where there is the chance to swim and snorkel with sea lions and Galapagos turtles. Spot other local species like the blue-footed boobies, frigate birds and the San Cristobal lava lizard. (B,L,D)



DAY 6: Espanola Island

This morning we head to the isolated southern island of Espanola. Brimming with native species like the Espanola mockingbird, lava lizard and waved albatross. Gardner Bay is a prime location for swimming, snorkelling and relaxing. You may also see sea lions, sharks and sea turtles in the clear waters. This afternoon's excursion takes you to Suarez Point. Watch the blue-footed and Nazca boobies dance and the large albatrosses launch off the cliff. There's a blowhole which can create spurts of 30-50 metre high. (B,L,D)



DAY 7: Floreana Island

One of the most impressive flamingo lagoons is located at Cormorant Point on Floreana Island. There you will see flamingos and various other shorebird species and there are two beaches to visit, Green Beach and Flour Sand Beach. Here green sea turtles come to nest and you can also see rays in the water. You will have the chance to take a walk and go snorkelling. Spend the afternoon relaxing at Post Office Bay, which is a post office like no other. Today tourists leave letters and post cards here and you can sift through them to find any that might be close to your home. The idea is to take one and deliver them by hand. (B,L,D)



TRIP CODE

ECSJGALB

DEPARTURE

Selected Fridays

DURATION

8 Days

LOCATIONS

Quito, Ecuador, Galapagos Islands



SOUTH AMERICA - SIGNATURE GALAPAGOS EXPRESS

DAY 8: Turtles Trail and Fly to Quito

Spend your final morning learning about the protection and conservation efforts of the islands at Turtle Trails. After, you will head to Baltra Airport to fly back to Quito or Guayaquil. (B)



INCLUSIONS & DETAILS

Accommodation

Hotel & Cabin on board a Catamaran Yacht

INCLUDED:

- 3 nights in Quito / Illa Experience hotel Luxury room
- \$100 USD on board credit
- Round trip flight to/from Galapagos
- Galapagos National Park Entrance fee USD 100, 00 p/p
- Galápagos Ingala card USD 20,00 p/p
- Transfers in Galapagos
- Accommodation on board in double cabin
- All meals during the cruise
- Naturalist Bilingual Guide level III
- All visits and excursions according to the itinerary
- Snorkel Gear (mask, tube and fins)
- Kayaks
- Unlimited purified water, coffee and tea

Mainland services

- English speaking guide + private transportation
- Tours and airport transfers as listed on the program
- Hotel accommodations as listed on the program subject to availability
- Meals as listed B: breakfast. L: lunch and D: dinner.

NOT INCLUDED:

- Negative PCR test for Covid-19 (taken 96 hours before the departure)
- Local Taxes
- Travel Insurance
- Personal expenses and tips
- Alcoholic drinks
- Items not specified
- Additional visits
- Additional meals

Inclusions

Difficulty Rating

2 (light adventure - average fitness required)

TRIP CODE

ECSJGALB

DEPARTURE

Selected Fridays

DURATION

8 Days

LOCATIONS

Quito, Ecuador, Galapagos Islands



SOUTH AMERICA - SIGNATURE GALAPAGOS EXPRESS

Single Surcharge	A single supplement surcharge applies and is subject to availability. Please contact us for more information.
Notes	Prices are based on per person, twin share. Prices are correct at time of publishing but are subject to change at any time. All entrance fees are subject to change without prior notice.
Price Dependent upon	Seasonality and availability at time of booking.

SUSTAINABILITY

Being environmentally accountable is a crucial part of our organisation. Chimu is currently striving towards using less paper, taking several initiatives to do so, and tracking our progress along the way. Our goal: A paperless organisation. For this reason, all information given to you will be sent electronically. We encourage those who choose to travel with us to support our aspirations and actions and ask that you reconsider printing out documentation. To view these documents, you can download them to your iPad or portable computer before and during your trip.

Chimu is passionate and dedicated to sustainability measures and understands the crucial part sustainability plays within the tourism industry.

We use local guides and office staff to both maximise local employment opportunities and minimise carbon footprint. Local guides also ensure you benefit from the intimate knowledge, passion, and culture of the country you're visiting. Our guides are all highly qualified (most with university degrees) or equipped with many years of experience and are paid above the standard wage. Whether it be our knowledgeable local guides, locally produced meals, or the transport on tour, we do not use imported goods when local products are available. We aim to minimise our impact on the environment and give as much back as possible to the communities we work in.

While visiting the many national parks, heritage sites, museums, and landmarks, our travellers are encouraged to explore whilst remaining culturally aware and sensitive. We further encourage you to buy appropriate souvenirs and discourage the buying of anything wrongfully made or taken from the environment i.e., shells and endangered species products. Information on how you can be environmentally conscious, and travel responsibly will be made available in our Travellers Guides and provided during your travels by guides and staff.

For more information on our sustainability policies, including how we are striving towards being a paperless organisation, click [HERE](#)

TRIP CODE
ECSJGALB
DEPARTURE
Selected Fridays
DURATION
8 Days
LOCATIONS

Quito, Ecuador, Galapagos Islands

