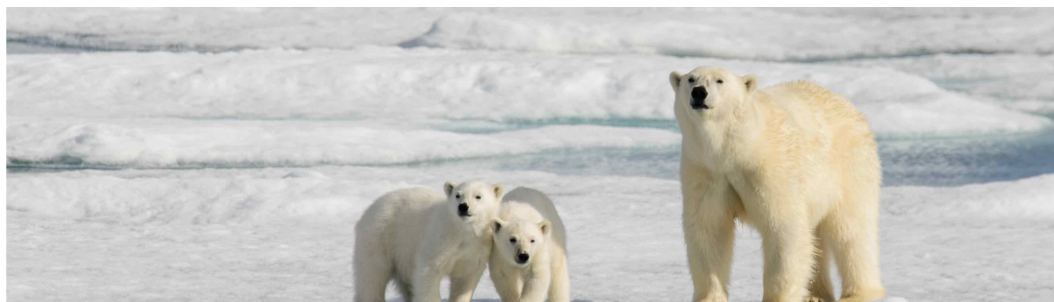


## SPITSBERGEN - NORTH SPITSBERGEN EXPLORER | PLANCIUS



### INTRODUCTION

### GET A USD\$1,000 DISCOUNT!\*

Start your North Spitsbergen cruise with a stroll through the old town of Longyearbyen, and then accompany our expedition to the northern part of the island to see the breathtaking scenery, the enormous number of seabirds, and, of course, the polar bear, who is the main attraction.

*Please Note: All itineraries are for guidance only. Programs may vary depending on ice, weather, and wildlife conditions. Landings are subject to site availabilities, permissions, and environmental concerns per AECO regulations. Official sailing plans and landing slots are scheduled with AECO prior to the start of the season, but the expedition leader determines the final plan. Flexibility is paramount for expedition cruises. The average cruising speed of our vessel is 10.5 knots.*

*\*Discount of USD\$1,000 is available to new bookings only, on selected departure dates only. Cabins subject to availability at the booking of booking. Discount cannot be combined with other promotions and/or discounts. Not redeemable for cash. Prices may be based on quad share. Please contact us for more details and availability. Offer valid until 30 Apr 2024 unless withdrawn prior.*

### ITINERARY

#### TRIP CODE

ACOWPBI

#### DEPARTURE

06/06/2024, 13/06/2024,  
27/06/2024, 03/06/2025,  
24/06/2025

#### DURATION

8 Days

#### LOCATIONS

Svalbard



## SPITSBERGEN - NORTH SPITSBERGEN EXPLORER | PLANCIUS

### DAY 1: Embark in Longyearbyen

You touch down in Longyearbyen, the administrative center of Spitsbergen, the largest island of the Svalbard archipelago. Enjoy strolling around this former mining town, whose parish church and Svalbard Museum make for fascinating attractions. Though the countryside appears stark, more than a hundred species of plant have been recorded in it. In the early evening the ship sails out of Isfjorden, where you might spot the first minke whale of your voyage.



### DAY 2: Sailing to Raudfjorden

Sailing to Raudfjorden, on the north coast of Spitsbergen, you take in an expansive fjord spilling with glaciers – and maybe even visited by ringed and bearded seals. The cliffs and shoreline of this fjord also support thriving seabird colonies, rich vegetation, and the possibility of polar bears.



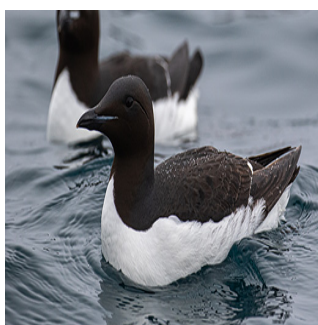
### DAY 3: Monaco Glacier

Depending on the weather, you could sail into Liefdefjorden and cruise within sight of the 5-kilometer-long (3.1 miles) face of the precipitous Monaco Glacier. The waters in front of this glacier are a favorite feeding spot for thousands of kittiwakes, and the base of the ice is a popular polar bear hunting ground. If ice conditions prevent sailing here early in the season, an alternate route along the west coast of Spitsbergen can be implemented.



### DAY 4: Hinlopen Strait

Today you sail into Hinlopen Strait, home to bearded seals, ringed seals, and polar bears. At the entrance there is even the possibility to spot blue whales. After cruising among the ice floes of Lomfjordshalvøya in the Zodiacs, you can view the bird cliffs of Alkefjellet with their thousands of Brünnich's guillemots. On the east side of Hinlopen Strait, you may attempt a landing on Nordaustlandet. Here reindeer, pink-footed geese, and walrus are likely sights. You can take an alternate route if ice prevents entry into Hinlopen.



#### TRIP CODE

ACOWPBI

#### DEPARTURE

06/06/2024, 13/06/2024,  
27/06/2024, 03/06/2025,  
24/06/2025

#### DURATION

8 Days

#### LOCATIONS

Svalbard



**SPITSBERGEN - NORTH SPITSBERGEN EXPLORER | PLANCIUS**

**DAY 5: Nordaustlandet**

The northernmost point of your voyage may be north of Nordaustlandet, in the Seven Islands. Here you reach 80° north, just 870 km (540 miles) from the geographic North Pole. Polar bears inhabit this region, so the ship may park for several hours among the pack ice before wheeling around west again.



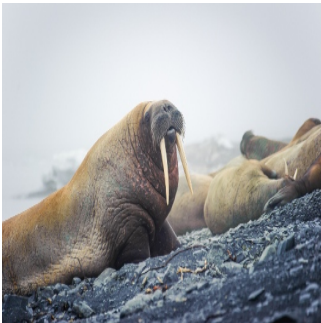
**DAY 6: Kongsfjorden**

While retracing your route west, keep watch for polar bears and elusive Greenland (bowhead) whales. About 40 nautical miles west of Spitsbergen, you sail the edge of the continental shelf. Here fin whales forage during the summer in the upwelling zones (where cold, nutrient-rich water wells up from below the sea’s surface) that run along the Spitsbergen banks. At the mouth of Kongsfjorden, you have a good chance of sighting minke whales.



**DAY 7: Forlandsundet**

Walrus sometimes haul out in Forlandsundet, your next stop. Alternatively, you might sail into St. Johns Fjord or south to the mouth of Isfjorden, landing at Alkhornet. Seabirds nest on these cliffs, Arctic foxes search below for fallen eggs and chicks, and reindeer graze the sparse vegetation. You arrive in Longyearbyen later at night.



**DAY 8: Disembark in Longyearbyen**

Every adventure, no matter how grand, must eventually come to an end. You disembark in Longyearbyen, taking home memories that will accompany you wherever your next adventure lies.



**TRIP CODE**

ACOWPBI

**DEPARTURE**

06/06/2024, 13/06/2024,  
27/06/2024, 03/06/2025,  
24/06/2025

**DURATION**

8 Days

**LOCATIONS**


Svalbard



SPITSBERGEN - NORTH SPITSBERGEN EXPLORER | PLANCIUS

INCLUSIONS & DETAILS


|                   |  |
|-------------------|--|
| Accommodation     | Cabin on board a ship  |
| Inclusions        | <div> <b>INCLUSIONS</b><br/>                     All meals onboard including snacks, coffee and tea.<br/>                     Accommodation onboard the Plancius in booked cabin category<br/>                     Onboard lecture program from Expeditions Team and Naturalists<br/>                     All applicable shore excursions and Zodiac cruising (except paid adventure options with cost)<br/>                     Use of rubber boots &amp; snowshoes<br/>                     Transfers and baggage handling between the airport, hotels and ship (*only for those passengers on the group flights to and from Longyearbyen).<br/>                     All port taxes<br/>                     All landing fees                 </div> <div> <b>EXCLUSIONS</b><br/>                     International or internal flights unless specified<br/>                     Airport transfers, taxes and excess baggage charges unless specified<br/>                     Meals other than those specified in the pre-departure information<br/>                     Pre or post cruise travel expenses<br/>                     Visa (if applicable) and passport fees<br/>                     Travel insurance (compulsory)<br/>                     Fuel surcharge may be applied to all bookings<br/>                     Paid adventure options and all personal expenses<br/>                     Tobacco, alcoholic or beverages (other than coffee and tea)<br/>                     Miscellaneous extras<br/>                     Laundry and communication charges on board<br/>                     Gratuities for Expedition team and crew (recommended US\$15 per person per day)                 </div> |
| Difficulty Rating | 2 (light adventure)  |
| Single Surcharge  | Available on request for some cabin categories. Subject to availability. Contact us for more details.  |

|  |
|--|
| TRIP CODE  |
| ACOWPBI  |
| DEPARTURE  |
| 06/06/2024, 13/06/2024, 27/06/2024, 03/06/2025, 24/06/2025                           |
| DURATION   |
| 8 Days   |
| LOCATIONS  |
| Svalbard   |
|  |

SPITSBERGEN - NORTH SPITSBERGEN EXPLORER | PLANCIUS

|                      |  |
|----------------------|--|
| Notes                | <p><i>All itineraries are for guidance only. Programs may vary depending on ice, weather, and wildlife conditions. Landings are subject to site availabilities, permissions, and environmental concerns per AECO regulations. Official sailing plans and landing slots are scheduled with AECO prior to the start of the season, but the expedition leader determines the final plan. Flexibility is paramount for expedition cruises. The average cruising speed of our vessel is 10.5 knots.</i></p> |
|                      | <p>Prices are based on per person, and may be basedf on quad/triple/twin share.<br/> Prices are correct at time of publishing but are subject to change at any time.<br/> Itinerary is subject to change depending on weather and ice conditions</p>   |
| Price Dependent upon | <p>Departure date, fuel surcharges, cabin category, currency fluctuations, seasonality and availability.</p>   |

SUSTAINABILITY

|  |
|--|
| TRIP CODE  |
| ACOWPBI  |
| DEPARTURE  |
| 06/06/2024, 13/06/2024, 27/06/2024, 03/06/2025, 24/06/2025                           |
| DURATION   |
| 8 Days   |
| LOCATIONS  |
| Svalbard   |
|  |