

AMAZON - BRAZIL AMAZON EXTENSION | JUMA LODGE



INTRODUCTION

The Juma Lodge is the perfect place to enjoy a true ecotourism adventure in the Amazon. The lodge is located on the Rio Juma, 100 km from Manaus. Here you will find the most diverse ecosystems and exuberant landscapes of the Amazon rainforest, igapÃ³s, terra firme and beaches. Your stay will take place in a family atmosphere where you will be able to share in the riches of the place and the deep knowledge of the region. While you are enjoying the rainforest you will also be learning and discovering this unique region from the people who know it best.

If wanting to spoil yourself, upgrade to our luxurious [Anavilhanas Amazon Lodge Extension](#).

Pricing and availability is subject to change and offer and may be withdrawn or varied at any time. Please [contact us](#) for the latest availability.

ITINERARY

TRIP CODE

BRTSMTA

DEPARTURE

Daily

DURATION

4 Days

LOCATIONS

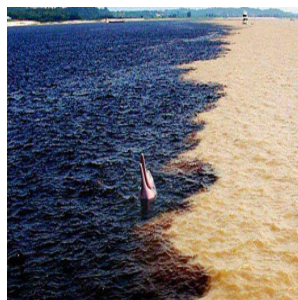
Brazil, Amazon

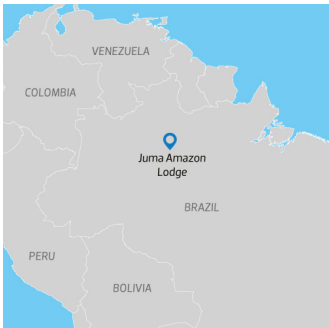


AMAZON - BRAZIL AMAZON EXTENSION | JUMA LODGE

DAY 1: Juma Amazon Lodge - Arrival

The capital of Amazonas, Manaus, is located at the banks of the Negro River. Juma Amazon Lodge is located 62 miles (100 km) southeast of Manaus in a fully preserved area of 17,300 acres (7,000 hectares). Departure toward Juma begins early in the morning, with guests being picked up between 6:30 and 7:30am at their Manaus hotel or at the airport*. The journey to Juma takes a total of three hours divided into three parts: speed boat, van, and speed boat again. En route to Juma, we stop to observe the magnificent Meeting of the Waters, where the muddy waters of the Solimões River meet the black waters of the Negro River. At this crucial junction point, the two rivers, without mixing, run side by side, thus forming the great Amazon River. Passengers will feel the difference in temperature between the two distinct rivers. Upon arrival at Juma Amazon Lodge, enjoy a warm greeting where a welcome drink with exotic fruits awaits you. You'll then have your first lunch at the lodge, comprised of both regional and international cuisine. Following lunch, we will depart for a canoe trip. Our canoeing tour provides an in-depth exploration of the igarapés (Amazonian creeks) and the igapós (flooded forest), an experience made possible only by paddle canoes. During the excursion, you'll be encouraged to swim and may encounter some of the river's most majestic creatures: pink dolphins. Return to the lodge for dinner. Later, we'll embark on an evening expedition to observe frogs, birds and most importantly, caimans. Our guide uses his flashlight to help spot caimans. With this light, we can see the caiman's eyes, which reflects a bright red dot, as the animal remains paralysed and clearly visible. The guide is then able to bring the caiman aboard for participants to see. Afterward, the caiman is returned to the river, unharmed. * We also offer an afternoon pick up in Manaus which departs from the Manaus airport at approximately 1:30pm. However for those arriving via afternoon transfer, lunch and canoe tour are not offered. Guests with flights arriving into Manaus after 1:30pm will be required to stay in a city hotel and will be picked up for the early morning transfer the following day. Each day is a sample itinerary only. The activities mentioned are available on a small group basis and will be selected with your guide and fellow travellers once at the lodge. Day to day excursions will vary based on individual capabilities, weather or other unforeseen conditions. ** Please note: Guests are allowed to bring 10kg (22lbs) of luggage per person. Luggage exceeding this amount can be stored in Juma Opera Hotel in Manaus safely and free of charge until you return from the lodge. Ensure you have what you need in a separate bag within the luggage allowance to take with you.

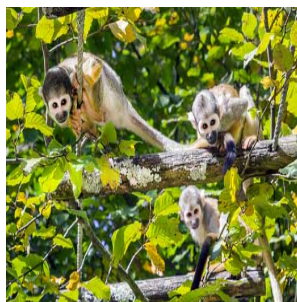


TRIP CODE
BRTSMTA
DEPARTURE
Daily
DURATION
4 Days
LOCATIONS
Brazil, Amazon


AMAZON - BRAZIL AMAZON EXTENSION | JUMA LODGE

DAY 2: Juma Amazon Lodge - Excursion

Early in the morning we will depart for a sunrise excursion witnessing the transformation of the sky and listening to the sounds of the waking birds. Our guides are equipped with binoculars to complement this experience with bird watching. Enjoy a breakfast with typical fruits and regional food. Depart for a jungle hike. In this educational jungle walk, our expert guide will introduce you to the wildlife of the Amazon. He will show you plants and describe their uses, as many are edible or medicinal. The paths implemented in exploration walks are constantly changed to avoid damaging the forest with overuse. Return to the lodge for lunch with regional and international cuisine. After lunch we'll take a tour around the lodge. This tour allows guests to experience Juma, built completely upon stilts, from a unique perspective: underneath. This fascinating approach provides insight regarding the construction of Juma and the role of sustainability within the lodge. Later in the afternoon we'll board a motorboat with one of our guides to fish and learn more about the infamous piranha, as well as other Amazonian fish native to the river. While enjoying the sunset from the boat we'll return to Juma. Dinner will be provided from the fish you caught earlier in the afternoon. Following dinner, one of our native guides will offer an informal lecture regarding everyday life in the Amazon, and the legends, traditions, and culture of the region. Each day is a sample itinerary only. The activities mentioned are available on a small group basis and will be selected with your guide and fellow travellers once at the lodge. Day to day excursions will vary based on individual capabilities, weather or other unforeseen conditions.



TRIP CODE

BRTSMTA

DEPARTURE

Daily

DURATION

4 Days

LOCATIONS

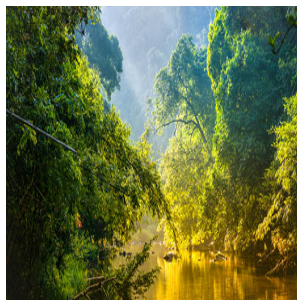
Brazil, Amazon



AMAZON - BRAZIL AMAZON EXTENSION | JUMA LODGE

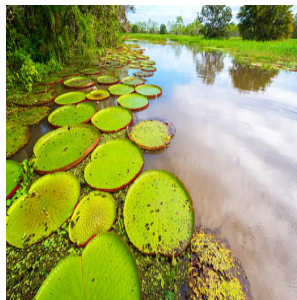
DAY 3: Juma Amazon Lodge - Excursion

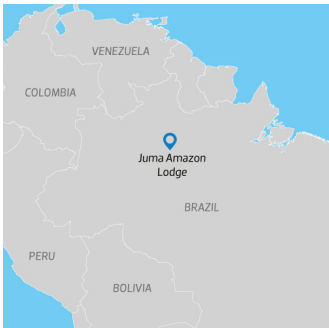
Wake early for another spectacular morning in the Amazon. After breakfast, depart the lodge for a hike, followed by a stop in a captivating area of the forest to eat lunch (regional cuisine baked over a fire) and subsequently rest in hammocks, as the natives do. In the afternoon, we will visit a local native house and learn from the inhabitants about their fascinating culture. A native will share his knowledge of the traditional medicinal plants and demonstrate how to prepare manioc flour, one of the region's main economic resources. Return to the lodge and enjoy a dinner featuring regional and international cuisine. Each day is a sample itinerary only. The activities mentioned are available on a small group basis and will be selected with your guide and fellow travellers once at the lodge. Day to day excursions will vary based on individual capabilities, weather or other unforeseen conditions.



DAY 4: Depart Juma Amazon Lodge

Enjoy your final breakfast at the lodge before your departure. On the way back to Manaus, we will stop at the Pirarucu Floating Dock to see the giant Pirarucu fish (also known as Arapaima), reaching 3 meters high (9,8 ft) and 200 kg (440 lbs). From the Floating Dock you can feed the fish and observe their impressive strength. From there you will return to Manaus, arriving around 12:00pm. On arrival you will be dropped off either at the airport or your Manaus hotel.




TRIP CODE
BRTSMTA
DEPARTURE
Daily
DURATION
4 Days
LOCATIONS
Brazil, Amazon


INCLUSIONS & DETAILS

Accommodation	Jungle Lodge
----------------------	--------------

AMAZON - BRAZIL AMAZON EXTENSION | JUMA LODGE

Inclusions	<p>Inclusions</p> <p>Return transfers from Manaus airport/hotel to Lodge Accommodation in a rustic cabin with private facilities All meals while at the lodge including water, juice, coffee & tea Activities with local English-speaking guides as detailed in the itinerary</p>
	<p>Exclusions</p> <p>Optional tours: Meeting of the Waters, and City Tour International and internal flights not indicated Visa and reciprocity fees (if applicable) Travel Insurance Beverages Personal expenses Gratuities for tour guides/drivers Any items not mentioned as included</p>
Difficulty Rating	1 (easy adventure)
Single Surcharge	A single supplement surcharge applies and is subject to availability. Please contact us for more information.
Notes	<p>The order of activities are subject to change. Prices are based on per person, twin share. Prices are correct at time of publishing but are subject to change at any time. All entrance fees are subject to change without prior notice.</p>
Price Dependent upon	Seasonality and availability at time of booking.

TRIP CODE
BRTSMTA
DEPARTURE
Daily
DURATION
4 Days
LOCATIONS
Brazil, Amazon


SUSTAINABILITY