

# ANTARCTIC PENINSULA - CLASSIC ANTARCTICA 10 DAYS | MV USHUAIA



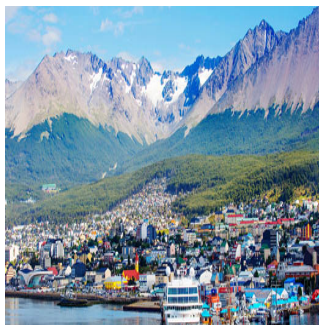
## INTRODUCTION

Undertake a truly unforgettable expedition cruise to the wonders of the 'Frozen white continent'. Experience the incredible wonders of Antarctica on the MV Ushuaia, a true expedition vessel. Cross the infamous and daring Drake Passage. As the seas calm you will witness the first sightings of snow-capped peaks as you reach the South Shetland Islands. Explore, king George Island where penguins, elephant seals and giant petrels reign superior. Humpback whales and orcas dance in the water in backdrops of snow capped peaks and crystal glaciers. This experience perfectly combines incredible natural landscapes with indescribable wildlife experiences.

## ITINERARY

### DAY 1: Depart from Ushuaia

Embarkation on the Ushuaia is scheduled for the afternoon. Here you will meet your expedition and lecture staff as well as your fellow crew. After you have settled into your cabins you will sail along the famous Beagle Channel and the scenic Mackinlay Pass.



### TRIP CODE

ACANCAT

### DEPARTURE

03/11/2025, 22/11/2025,  
11/12/2025, 20/12/2025,  
29/12/2025, 07/01/2026,  
16/01/2026, 17/03/2026,  
26/03/2026

### DURATION

10 Days

### LOCATIONS

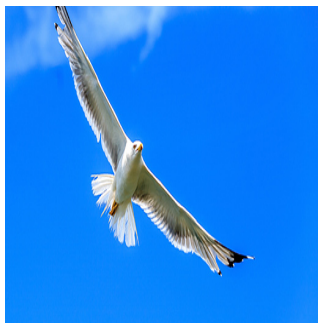
Antarctic Peninsula




# ANTARCTIC PENINSULA - CLASSIC ANTARCTICA 10 DAYS | MV USHUAIA

## DAY 2: Crossing the Drake Passage - Days 2 & 3

Named after the renowned explorer, Sir Francis Drake, who sailed these waters in 1578, the Drake Passage also marks the Antarctic Convergence, a biological barrier where cold polar water sinks beneath the warmer northern waters. This creates a great upwelling of nutrients, which sustains the biodiversity of this region. The Drake Passage also marks the northern limit of many Antarctic seabirds. As we sail across the passage, lecturers will be out with you on deck to help in the identification of an amazing variety of seabirds, including many albatrosses, which follow in our wake. The USHUAIA's open bridge policy allows you to join our officers on the bridge and learn about navigation, watch for whales, and enjoy the view. A full program of lectures will be offered as well. The first sightings of icebergs and snow-capped mountains indicate that we have reached the South Shetland Islands, a group of twenty islands and islets first sighted in February 1819 by Capt. William Smith of the brig Williams. With favorable conditions in the Drake Passage our lecturers and naturalists will accompany you ashore as you experience your first encounter with the penguins and seals on Day 3.

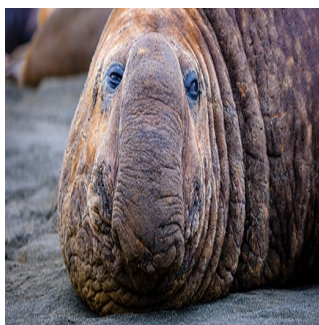


<b>TRIP CODE</b>
ACANCAT
<b>DEPARTURE</b>
03/11/2025, 22/11/2025, 11/12/2025, 20/12/2025, 29/12/2025, 07/01/2026, 16/01/2026, 17/03/2026, 26/03/2026
<b>DURATION</b>
10 Days
<b>LOCATIONS</b>
Antarctic Peninsula


## ANTARCTIC PENINSULA - CLASSIC ANTARCTICA 10 DAYS | MV USHUAIA

### DAY 4: Antarctic Peninsula - Days 4 to 7

The South Shetland Islands are a haven for wildlife. Vast penguin rookeries, beaches ruled by Antarctic fur seals and Southern elephant seals make every day spent in this amazing island group unforgettable. Sailing through the narrow passage into the flooded caldera of Deception Island is truly amazing. King George Island, the largest of the South Shetland Islands, features colonies of nesting Adélie and Chinstrap Penguins, Kelp Gulls, Blue-eyed Cormorants, Antarctic Terns and Southern Giant Petrels and is home to scientific bases of many different countries. Macaroni, Chinstrap and Gentoo Penguins as well as elephant seals await you at Livingston Island. The Antarctic Peninsula's remarkable history will provide you with a type of excitement often only associated with the early explorers. You will have plenty of time to explore its amazing scenery, a pristine wilderness of snow, ice, mountains and waterways, and an incredible wide variety of wildlife. Apart from penguins and seabirds you are very likely to see Weddell, crabeater and leopard seals as well as Minke, killer (orca) and humpback whales at close range. We hope to navigate some of the most beautiful waterways (depending on the ice conditions): the Gerlache Strait, the Neumayer Channel, and the Lemaire Channel, the latter are narrow passages between towering rock faces and spectacular glaciers. We plan to make at least two landings per day and possible landing sites may include: Paradise Bay is perhaps the most aptly named place in the world and we attempt a landing on the continent proper. After negotiating the icebergstrewn waters of the Antarctic Sound, we hope to visit the bustling Adélie Penguin (over 100,000 pairs breed here) and Blue-eyed Cormorant colonies on Paulet Island. The Nordenskjöld expedition built a stone survival hut here in 1903. Today its ruins have been taken over by nesting penguins. Further exploration may take you to the Melchior Island group, Cuverville Island, Portal Point, Neko Harbour, Pléneau Island and if ice conditions permit, to Petermann Island for a visit to the southernmost colony of Gentoo Penguins.



#### TRIP CODE

ACANCAT

#### DEPARTURE

03/11/2025, 22/11/2025,  
11/12/2025, 20/12/2025,  
29/12/2025, 07/01/2026,  
16/01/2026, 17/03/2026,  
26/03/2026

#### DURATION

10 Days

#### LOCATIONS

Antarctic Peninsula



# ANTARCTIC PENINSULA - CLASSIC ANTARCTICA 10 DAYS | MV USHUAIA

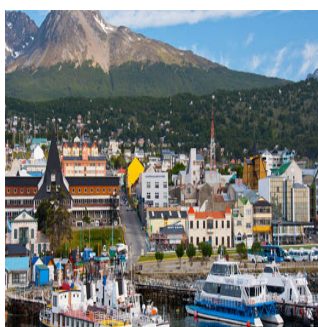
**DAY 8: At Sea crossing the Drake Passage Day 8 & 9**

We leave Antarctica and head north across the Drake Passage. Join our lecturers and naturalists on deck as we search for seabirds and whales and enjoy some final lectures. Take the chance to relax and reflect on the fascinating adventures of the past days on the way back to Ushuaia.



**DAY 10: Disembarkation in Ushuaia**

Disembarkation is scheduled for the early morning. You will disembark in Ushuaia after breakfast where you can continue to whatever journey may lay ahead. Please note: Cruise itinerary is subject to change depending on weather conditions, ice conditions and other factors.



## TRIP CODE

ACANCAT

## DEPARTURE

03/11/2025, 22/11/2025, 11/12/2025, 20/12/2025, 29/12/2025, 07/01/2026, 16/01/2026, 17/03/2026, 26/03/2026

## DURATION

10 Days

## LOCATIONS

Antarctic Peninsula



## INCLUSIONS & DETAILS

<b>Accommodation</b>	Cabin on board ship
<b>Inclusions</b>	<p><b>INCLUSIONS</b></p> <ul style="list-style-type: none"> <li>All accommodation on board the MV Ushuaia</li> <li>All meals on board</li> <li>All scheduled landings and excursions</li> <li>All port fees</li> <li>All landing fees</li> <li>Group arrival/departure transfers in Ushuaia</li> <li>Detailed post-expedition log</li> <li>Programs of lectures by naturalists and leadership by experienced expedition staff</li> </ul> <p><b>EXCLUSIONS</b></p> <ul style="list-style-type: none"> <li>Airfares to and from embarkation and disembarkation city</li> <li>Visa fees (if applicable)</li> <li>Travel insurance</li> <li>Personal expenses such laundry, on board communication</li> <li>Gratuities for the crews</li> <li>Pre or post cruise travel expenses</li> <li>Optional activities</li> </ul>

# ANTARCTIC PENINSULA - CLASSIC ANTARCTICA 10 DAYS | MV USHUAIA

<b>Difficulty Rating</b>	2 (light adventure)
<b>Single Surcharge</b>	Available upon request, and subject to availability. Contact us for more details.
<b>Notes</b>	Prices are based on per person, twin share* (unless otherwise stated for triple/quad cabins) Prices are correct at time of publishing but are subject to change at any time. Itinerary is subject to change depending on weather and ice conditions
<b>Price Dependent upon</b>	Departure date, fuel surcharges, cabin category, currency fluctuations, seasonality and availability.

## SUSTAINABILITY

<b>TRIP CODE</b>
ACANCAT
<b>DEPARTURE</b>
03/11/2025, 22/11/2025, 11/12/2025, 20/12/2025, 29/12/2025, 07/01/2026, 16/01/2026, 17/03/2026, 26/03/2026
<b>DURATION</b>
10 Days
<b>LOCATIONS</b>
Antarctic Peninsula

