

# GALAPAGOS ISLANDS - CENTRAL & EASTERN ISLANDS | REINA SILVIA VOYAGER




## INTRODUCTION

This 10-day eastern and central islands Galapagos adventure is aboard the Reina Silvia Voyager, starting and ending in the fascinating Ecuadorian capital of Quito. This small ship, carrying up to 16 passengers, is a shining example of understated comfort, sailing into hard to reach areas for optimum wildlife viewing. After transferring from Quito to Santa Cruz, the Reina Silvia will transport you to the islands of Espanola, San Cristobal, Santa Fe, South Plaza, Genovesa, Santiago and Rabida. Expect to see vast white beaches; bird colonies; sea lions; iguanas; multiple boobie species; volcanic landscape; wild flamingos; and experience some of the best snorkelling in the archipelago.

Please enquire for rates, dates and applicable departures. Prices are subject to change and availability. Terms and conditions apply please contact us for more details.

\* Itinerary is subject to change depending on weather conditions and government regulations.

## ITINERARY

<b>TRIP CODE</b>
ECGACERQ
<b>DEPARTURE</b>
Selected Fridays
<b>DURATION</b>
10 Days
<b>LOCATIONS</b>
Galapagos Islands


## GALAPAGOS ISLANDS - CENTRAL & EASTERN ISLANDS | REINA SILVIA VOYAGER

### DAY 1: Quito

Arrive in Quito at any time. This day can be spent at your own leisure. Quito sits at high altitude under the towering Pichincha volcano. It is a beautiful city, arguably one of the most beautiful in South America. The city stretches along the valley and is surrounded by the Andes. The Old Town of Quito is awash with history, with more than 30 churches to explore, and a number of fascinating museums. La Compania de Jesus is considered to be the most beautiful and ornate churches in the Americas. The city's oldest street, Calle La Ronda, is well worth exploring. \*Please note that the round trip flight to the Galapagos Islands is included.



### DAY 2: Quito & Puerto Ayora

Transfer early to the airport for the flight to the Galápagos Islands. Upon arrival, meet the Naturalist Guide and cross to Santa Cruz islands to visit the highlands and the Charles Darwin Research Station before boarding the boat in the late afternoon from Puerto Ayora. After arrival in Baltra, visit of the highlands of Santa Cruz Island for a special opportunity to view the islands' most famous reptile: the giant tortoises in their wild habitat. What a privilege to see an endangered species roving in this lush environment! The vegetation of the area includes the Scalesia Forest (an endemic giant daisy tree) and birds such as the vermilion flycatcher will delight everyone with its scarlet feathers against an emerald green forest. Look for Darwin's finches, particularly the famous Woodpecker Finch. We will then visit the Fausto Llerena Breeding Center and Charles Darwin Research Station to learn first hand of the conservation and research efforts in the islands. There, you'll see several subspecies of adult tortoises, lots of hatchlings, and learn of the repatriation programs that are saving several subspecies of tortoises and iguanas from extinction.



#### TRIP CODE

ECGACERQ

#### DEPARTURE

Selected Fridays

#### DURATION

10 Days

#### LOCATIONS

Galapagos Islands



## GALAPAGOS ISLANDS - CENTRAL & EASTERN ISLANDS | REINA SILVIA VOYAGER

### DAY 3: Gardner Bay & Punta Suarez

Enjoy the day on Española Island, one of the oldest in the archipelago. Visit the white sandy beach of Gardner Bay and the bird colonies of Punta Suárez. Take guided walks to observe wildlife and have free time for swimming or snorkelling. Spend part of the day visiting spectacular Gardner Bay. Walk across a lovely white sand beach amongst a busy sea lion colony and nesting sea turtles (seasonal). Later, take some time exploring the Punta Suárez visitor site, on the north-western corner of the island. Here, birds are everywhere—underfoot, on the trail, overhead, diving into the sea, taking off from cliffs, sitting quietly, and if the timing is right, engaging in ritual mating dances or hatching eggs. As the panga driver guides us in through the surf to the landing, sea lions are often seen “hanging 10” on the waves. A great tangle of marine iguanas, stretched out in the sun on the beach, are usually present when we arrive.



### DAY 4: Isla Lobos & Punta Pitt

The day begins early, as you depart to the rugged Punta Pitt. Located on the eastern tip of the island, Punta Pitt is a rocky formation where you can enjoy a hike and spot blue-footed boobies, frigatebirds, and sea lions basking in the sun. As you explore this beautiful location, you will be struck by the diverse range of wildlife that calls this place home. Afterwards, you will head to Isla Lobos, a small islet located just a short distance from San Cristobal Island. Here, you can experience the incredible underwater world of the Galapagos by snorkeling with sea turtles, sea lions, and a vibrant array of fish. The crystal clear waters of the Galapagos will provide you with a magical and unforgettable experience. Following lunch you will go an afternoon navigation to Kicker Rock. This impressive rock formation, located off the coast of San Cristobal Island, is a hotspot for wildlife enthusiasts.



#### TRIP CODE

ECGACERQ

#### DEPARTURE

Selected Fridays

#### DURATION

10 Days

#### LOCATIONS

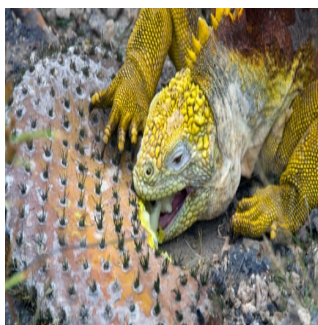
Galapagos Islands



## GALAPAGOS ISLANDS - CENTRAL & EASTERN ISLANDS | REINA SILVIA VOYAGER

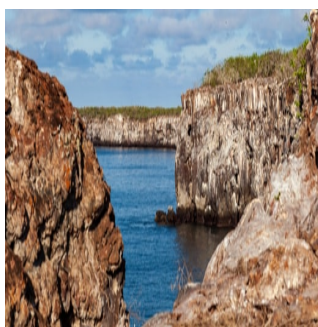
### DAY 5: Santa Fe & South Plaza

Visit Santa Fé island for a chance to mingle with the iguanas. Continue to South Plaza for some great bird watching opportunities and views from the oceanside cliffs. Today, spend time visiting fascinating Santa Fé, home to a small population of very large land iguanas, and the largest of the Opuntia cacti. The lagoon is ideal for swimming and snorkeling; sea lions and colorful fish are in abundance here, as well as the occasional sea turtle. Later, visit South Plaza, a small, but very rewarding island to visit. Here you see an array of endemic land iguanas munching on Opuntia blossoms and leaves. On the upper edge, at the windward side, Swallow Tailed Gulls nest. Watch these beautiful birds maneuver in the tricky air currents as they set up to land on the cliff face. From the bluff you can see schools of Yellowtail Mullet, occasionally a shark, and lots of birds flying back and forth.



### DAY 6: Darwin Bay & El Barranco

Visit Darwin Bay and marvel at the sheer number of birds along the many trails. Head to El Barranco in the afternoon to see the many types of boobies, including red-footed boobies. In the morning, visit the white-sand coral beach of Darwin Bay which winds through mangroves filled with land and marine birds. See Nazca boobies, red-footed boobies and swallow-tailed gulls, and further down the path, observe tidal pools where sea lions swim playfully. In the afternoon, visit El Barranco (also known as Prince Phillip's Steps), which is a steep, rocky path that leads up to a high cliff-face. If you're lucky, catch a glimpse of red-footed boobies, short-eared owls, Nazca Boobies, storm petrels, Galapagos swallows, and Galapagos doves, as you enjoy this magnificent views.



#### TRIP CODE

ECGACERQ

#### DEPARTURE

Selected Fridays

#### DURATION

10 Days

#### LOCATIONS

Galapagos Islands



## GALAPAGOS ISLANDS - CENTRAL & EASTERN ISLANDS | REINA SILVIA VOYAGER

### DAY 7: Santiago & Bartolome

Visit Sullivan Bay on Santiago Island to witness the giant lava formations contrasting the white-coral-sand beach. Continue to Bartolomé for a guided walk to see the island's dramatic volcanic features and the iconic Pinnacle Rock. The morning visit heads to Sullivan Bay on Santiago Island, located on the southeast part of the island. This place is interesting for its geology because the area has elevations in form of small volcanoes, formed by the lava flows. Later, head to Bartolomé Island, home of the famous Pinnacle Rock. This is an exceptional place to observe volcanic island geology and to snorkel. Among the many colorful species you will see Bi-color Parrotfish, Streamer Hogfish, and Flag Cabrilla. Sometimes you get a special treat—a penguin “snorkeling” right around you in hunt of fishy treats. The long climb up the wooden steps to the pinnacle of this cinder cone takes you through cinders and rough volcanic formations, a veritable moonscape. The lower slopes are graced with a light sprinkling of the delicate, silvery Taquilia, a ground hugging plant adapted to this harsh spot. On top you will enjoy the spectacular view of Bartolomé, Santiago, and several other nearby islands.



#### TRIP CODE

ECGACERQ

#### DEPARTURE

Selected Fridays

#### DURATION

10 Days

#### LOCATIONS

Galapagos Islands



## GALAPAGOS ISLANDS - CENTRAL & EASTERN ISLANDS | REINA SILVIA VOYAGER

### DAY 8: Rabida & Chinese Hat

Spend the morning exploring the red sand beaches and salt water lagoons of this tiny island. Look for wading flamingos and nesting pelicans before heading out to do some snorkelling. In the afternoon, discover the lava flows and lava tunnels on the small island of Chinese Hat. After, enjoy a refreshing dip in turquoise waters. Search for fish and sea turtles in the protected bay. Rabida is a “small red island,” the colour of the volcanic cinders. The red beach is usually well populated with sea lions and pups. At times the low salt bushes are loaded with nesting California Brown Pelicans. Just behind the beach, in a brackish lagoon, see Bahamas White-cheeked Pintail Ducks, migratory shore and wading birds, and Greater Flamingos. Flamingos need the presence of a dozen or two other flamingos to stimulate their synchronous mating dance. If our timing is right, we will be able to observe this highly entertaining ritual as well as two species of boobies nest along the cliffs. Later, travel to Sombrero Chino, a tiny island just off the southeast tip of Santiago. Its name (Chinese Hat) describes the island’s shape. Though centrally located, it is one of the least visited sites in the area. Patches of pahoehoe lava, cracked lava and lava tubes can be found on the island. If you’re up for a walk, a path leads to some spectacular views of the waves crashing below. White-tipped sharks frequent the area, as do the playful Galapagos Penguins and sea lions.



### DAY 9: Baltra & Quito

Disembark in the morning at Baltra Island where you will be transferred to the airport for your return flight to Quito. The rest of the day in Quito can be spent at your own leisure.



#### TRIP CODE

ECGACERQ

#### DEPARTURE

Selected Fridays

#### DURATION

10 Days

#### LOCATIONS

Galapagos Islands



# GALAPAGOS ISLANDS - CENTRAL & EASTERN ISLANDS | REINA SILVIA VOYAGER

## DAY 10: Quito

Enjoy breakfast at the hotel and depart Quito at any time, taking the incredible memories you have made so far and gather inspiration for future journeys to come!



<b>TRIP CODE</b>
ECGACERQ
<b>DEPARTURE</b>
Selected Fridays
<b>DURATION</b>
10 Days
<b>LOCATIONS</b>
Galapagos Islands

## INCLUSIONS & DETAILS

<b>Accommodation</b>	Cabin on board ship
----------------------	---------------------

**INCLUSIONS**  
 Cabin accommodation on board Reina Silvia Voyager  
 All meals whilst on board including snacks  
 Guiding and lectures by Galapagos Naturalist Guide  
 English speaking expedition team  
 Internal flights Quito to Puerto Ayora Day 2  
 Internal flight Baltra to Quito Day 9

**EXCLUSIONS**

**Inclusions**

- Galapagos National Park Entrance Fee (US\$100 per person subject to change)
- Galapagos Transit Control Card (US\$20 per person subject to change)
- Visa Fees (if applicable)
- Travel insurance
- Beverages (other than tea and coffee)
- Personal expenses such as laundry, on-board communication
- Gratuities for the crew
- Optional activities whilst on board

<b>Difficulty Rating</b>	2 (light adventure)
--------------------------	---------------------

<b>Single Surcharge</b>	A single supplement surcharge applies and is subject to availability. Please contact us for more information.
-------------------------	---



## GALAPAGOS ISLANDS - CENTRAL & EASTERN ISLANDS | REINA SILVIA VOYAGER

### Notes

All entrance fees are subject to change without prior notice.  
 Please note kayak activities are subject to weather conditions.  
 Prices are based on per person, twin share\* (unless otherwise stated)  
 Prices are correct at time of publishing but are subject to change at any time

\* Itinerary is subject to change depending on weather conditions and government regulations.

### Price Dependent upon

Seasonality, fuel surcharges, currency fluctuations and availability at time of booking.

## SUSTAINABILITY

### TRIP CODE

ECGACERQ

### DEPARTURE

Selected Fridays

### DURATION

10 Days

### LOCATIONS

Galapagos Islands

