

## ANTARCTICA - ANTARCTICA EXPRESS AIR CRUISE | MAGELLAN EXPLORER



### INTRODUCTION

Experience Antarctica on this express cruise and see this magical other-worldly environment without missing out on the best of it. Journey to Antarctica on board the Magellan Explorer, a comfortable and practical ship that is made for Antarctica's harsh environment. Enjoy exquisite scenery and unique wildlife and get up close and personal with the surroundings via shore landings. Travel in comfort and elegance and enjoy Antarctica and its majestic beauty.

### ITINERARY

#### DAY 1: Embarkation

Your journey begins in Ushuaia, Argentina. Board your expedition vessel and sail along the Beagle Channel towards Puerto Williams, Chile, the southernmost town in the world. Explore the surroundings before setting sail to Cape Horn. **\*\*Please note boarding in Ushuaia is between 3:00 and 4:00pm, Please note boarding will close at 4:00pm.**



#### DAY 2: Cape Horn

After an overnight crossing of Nassau Bay, you awake in full view of legendary Cape Horn! Weather permitting, board a Zodiac and be one of the few privileged adventurers to step foot on this famous and rarely visited island. Back on board, set sail towards Antarctica and cross the famous passage named in honour of Sir Francis Drake, the great 16th century British explorer.



#### TRIP CODE

ACAXAEAC

#### DEPARTURE

18/11/2025, 27/11/2026

#### DURATION

6 Days

#### LOCATIONS

Antarctica



## ANTARCTICA - ANTARCTICA EXPRESS AIR CRUISE | MAGELLAN EXPLORER

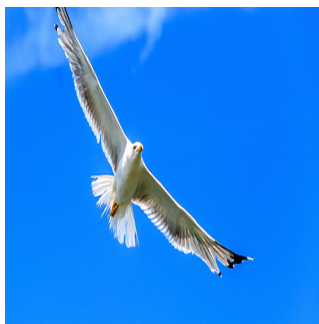
### DAY 3: Drake Passage

As you sail through the Drake Passage en route to King George Island, in the South Shetland Islands, attend an engaging program of lectures and presentations. In the company of expert guides, watch for wildlife from the glass-enclosed lounge or from the outside decks. You may spot magnificent sea birds, such as albatrosses and petrels, as well as different species of whales on their way south to Antarctica.



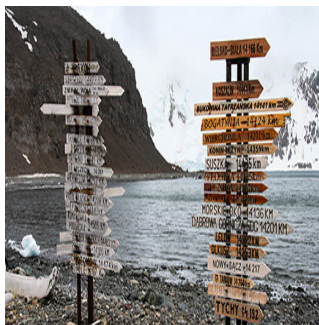
### DAY 4: Drake Passage & Antarctica

After crossing the Antarctic Convergence, the environment changes noticeably. Keep your camera ready, as this is the time to watch for the first icebergs and the first sight of Antarctic land. Reaching the South Shetland Islands, sail in ice-filled bays, while enjoying the company of sea birds, penguins, seals and whales. Board a Zodiac for your first memorable shore visit to a penguin colony. Taking advantage of the endless Antarctic daylight, exploration will continue well into the evening.



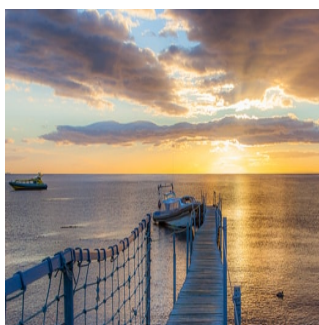
### DAY 5: King George Island & Return Flight

Upon reaching King George Island, disembark at Fildes Bay and explore the area, such as the Chilean Base Frei and the Russian Base Bellingshausen. Bid farewell to Antarctica before boarding the flight back to Punta Arenas, Chile. Upon arrival, transfer to your hotel for the night. (Note: Meals in Punta Arenas are at your leisure and not included in the program.).



### DAY 6: Departure

After breakfast, transfer to the Punta Arenas airport for your onward flight



#### TRIP CODE

ACAXAEAC

#### DEPARTURE

18/11/2025, 27/11/2026

#### DURATION

6 Days

#### LOCATIONS


Antarctica



**ANTARCTICA - ANTARCTICA EXPRESS AIR CRUISE | MAGELLAN EXPLORER**

**INCLUSIONS & DETAILS**

<b>Accommodation</b>	Hotel & Cabin On board a Ship
<b>Inclusions</b>	<p><b>INCLUSIONS</b>                  Comprehensive pre- and post-voyage information material.                  Accommodation on board during your voyage.                  Loan of waterproof boots for excursions in Antarctica, contingency plan, and IAATO passenger fee.                  All guided excursions, as well as lectures and entertainment on board.                  Daily buffet breakfast, à la carte lunch and dinner, as well as wine, beer, juice, soft drinks, coffee, tea, hot chocolate, cappuccino, water, and snacks on board the ship.                  Charter flights from King George Island to Punta Arenas. One nights stay with breakfast in Punta Arenas.                  Special access to Explorers House for guests in Punta Arenas.                  Group transfers from the hotel in Punta Arenas to airport on final day.</p> <p><b>EXCLUSIONS</b>                  International or domestic flights, unless specified                  Transfers not mentioned in the itinerary                  Visa and reciprocity fees (if applicable)                  Airport arrival or departure taxes                  Vaccination charges                  Travel insurance                  Hotels and meals not included in itinerary                  Optional excursions not included in the itinerary                  Optional activity surcharges                  All items of a personal nature, including but not limited to gratuities, select drinks, laundry services, personal clothing, medical expenses, wi-fi, email or phone charges.                  From 2026/27 Antarctic season onward standard internet service provided on a complimentary basis. (Guests booked in Penthouse Suites on Magellan Explorer and Grand Veranda Suites on Magellan Discoverer enjoy complimentary premium internet service.)</p>
<b>Difficulty Rating</b>	2 (light adventure)
<b>Single Surcharge</b>	Available upon request, contact us for more details.

<b>TRIP CODE</b>	ACAXAEAC
<b>DEPARTURE</b>	18/11/2025, 27/11/2026
<b>DURATION</b>	6 Days
<b>LOCATIONS</b>	Antarctica
	

# ANTARCTICA - ANTARCTICA EXPRESS AIR CRUISE | MAGELLAN EXPLORER

<b>Notes</b>	<p>Prices are based on per person, and may be based off quad/triple/ or twin share cabins* (please contact us for more details)</p> <p>Prices are correct at time of publishing but are subject to change at any time.</p> <p>*Itinerary is subject to change depending on weather and ice conditions.</p>
<b>Price Dependent upon</b>	<p>Departure Date, Fuel Surcharges, Cabin Category, Currency Fluctuations, Seasonality &amp; Availability.</p>

## SUSTAINABILITY

<b>TRIP CODE</b>
ACAXAEAC
<b>DEPARTURE</b>
18/11/2025, 27/11/2026
<b>DURATION</b>
6 Days
<b>LOCATIONS</b>
Antarctica

