

ARGENTINA - EXPLORA EL CHALTEN



INTRODUCTION

The essence of Patagonia is beautifully captured within the numerous experiences undertaken at Explora El Chalten. Opening its doors for the first time in 2021, Explora El Chalten is located just 17km away from El Chalten town, in the Argentinean Patagonia. Located in beautiful territory within the Los Huemules Conservation Range, Explora El Chalten is flanked by snow-capped peaks which give way to beautiful forest paths. In the nearby surrounds you will find immense glaciers, solitary lakes and raging rivers. This lodge serves as a headquarter for which you will undertake a number of exciting adventure activities - nature walks, rock climbs, horseback rides, high mountain ascents and overland explorations will truly allow you to immerse yourself in the unforgettable experiences Patagonia has to offer.

Each experience at Explora El Chalten has been masterfully crafted to unveil the essence of the remote territory. The explorations are varied and offer insight into the regions history, geography and biosphere. Within the lodging, the cuisine is inspired by the deep roots of the Argentinean Patagonia. The spa has been intricately designed to allow you to stop, breathe and recompose. Here at Explora El Chalten, the holistic experience is designed to tell a unique story to each adventurer. Come and discover this journey for yourself.

ITINERARY

TRIP CODE

ARHTEC

DEPARTURE

Daily (During the Patagonia Season from Oct-Apr)

DURATION

4 Days

LOCATIONS

Argentina, Patagonia




ARGENTINA - EXPLORA EL CHALTEN

DAY 1: Arrival in Explora El Chalten

Upon arrival in El Calafate you will be met by our local representative and transferred by road to Explora El Chalten. With unforgettable views and access to locations like Electric Valley and the Marconi Glacier. The Explora lodge in El Chaltén has been strategically built within the Los Huemules Conservation Reserve, our long-standing conservation partners in the region. Patagonia is not a country nor a place. It is a vast territory shared by Chile and Argentina, whose remarkable geography -shaped by mountains, glaciers, lakes, and rivers- offers countless exploration opportunities. This afternoon, meet with a guide to discuss your activities for the following day. Dinner and overnight. Please note: As of October 2024 there is no fee to enter Los Glaciers National Park from El Chalten, however the Argentine government will shortly start to charge for entrance. They have not yet advised what the fee will be and when they will begin to charge. Please note your tour/s from El Chalten that enter the national park may not include entrance fees and these may be required to be paid on arrival . This is something that is outside of our control. Once we are aware of the costs of the fees we will pre pay them on clients behalf or they may begin to be included in the lodge stay rate.




TRIP CODE
ARHTEC
DEPARTURE
Daily (During the Patagonia Season from Oct-Apr)
DURATION
4 Days
LOCATIONS
Argentina, Patagonia


ARGENTINA - EXPLORA EL CHALTEN

DAY 2: Exploring El Chalten and Surroundings

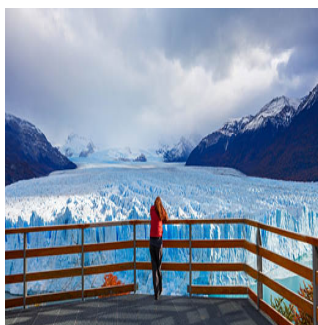
Explora Atacama have a set of activities where you can choose from onsite, allowing you to create your own personalised experience deep in the incredible surroundings at El Chalten. Below are suggested options you may like to choose from through-out your stay. Hiking Explorations - We hike throughout our locations. Walking at your own, committed pace, allows you to immerse in the natural and cultural landscapes we explore, varying in intensity -beginner or advanced- and duration - half day to full day. Locations include electrico valley, the Los Glaciares National Park, and the Diablo lagoon Overland - These are vanned explorations interrupted by short-duration hikes along the way. The combination allows travelers to access areas of particular beauty and ecological significance. you may drive to the Perito Moreno Glacier, explore the border of the Las Vueltas river and enjoy incredible views of the Andes Mountains. High Mountain Ascent - We strive to introduce our travelers to truly remote locations - and mountains are one of them. Each one has its own different demands and rewards, yet they all guarantee a revitalizing experience for mind and body alike. You may ascend the Cerro Madsen or the Paso Del Cuadrado to explore incredible perspectives of the greater Patagonia



TRIP CODE
ARHTEC
DEPARTURE
Daily (During the Patagonia Season from Oct-Apr)
DURATION
4 Days
LOCATIONS
Argentina, Patagonia


DAY 3: Exploring El Chalten and Surroundings

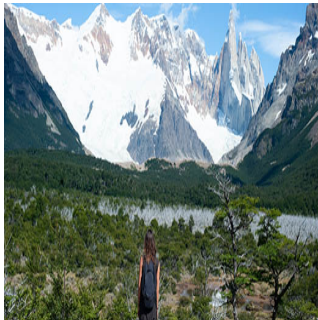
Today you will continue the wide array of activities you will undertake in Explora El Chalten. Self Guided - The company and knowledge of one of our guides, is available for you to discover unique locations in the areas surrounding our lodge - either on foot or bicycle. For further information approach your exploration team. You may walk through the Laguna Azul surroundings watching for birds and deer tracks or through Laguna Condor. Climbing - Rock climbing is a form of exploration that can be found throughout the world. At Explora it is seen as a way of truly encountering the territory's essence, which is why we facilitate it on different levels of experience, following the necessary safety requirements.



ARGENTINA - EXPLORA EL CHALTEN

DAY 4: Depart Explora El Chalten

This morning you will depart Explora El Chalten. you will be transferred to El Calafate where you may make your own arrangements or join pre-arranged connecting services.



TRIP CODE
ARHTEC
DEPARTURE
Daily (During the Patagonia Season from Oct-Apr)
DURATION
4 Days
LOCATIONS
Argentina, Patagonia

INCLUSIONS & DETAILS

Accommodation	All Inclusive Lodge
Inclusions	<p>Full board meals and open bar (most drinks included) All inclusive activities with local guides - selected optional excursions may incur additional charges Entrance Fee to national parks Shuttle transfers to/from El Calafate Hotels/Airport (selected times apply*) Shuttle transfers to/from Explora Torres Del Paine (selected days/times - minimum stays apply at both properties*)</p> <p>EXCLUSIONS International airfare Pre or post land arrangements Visa and reciprocity fees (if applicable) Travel Insurance Tipping (optional)</p>
Difficulty Rating	2 (light adventure)
Single Surcharge	A single supplement surcharge applies and is subject to availability. Please contact us for more information.
Notes	<p>Prices are based on per person, twin share. Prices are correct at time of publishing but are subject to change at any time. All entrance fees are subject to change without prior notice.</p>
Price Dependent upon	Seasonality and availability at time of booking.



SUSTAINABILITY