

ANTARCTICA - BEST OF ANTARCTICA: WHALE DISCOVERY | OCEAN ENDEAVOUR



INTRODUCTION

Hop onboard the Ocean Endeavour for an extended 12-day adventure that you will never forget. We sail toward the great white continent. Here you will witness whales in huge numbers. This itinerary has been designed especially for people who love wildlife and awesome adventures.

Explore the Antarctic Peninsula, following the migration paths of the whales that call these waters home for part of the year. You can also spot penguins, seals and seabirds en route from the deck of your ship and from the fleet of Zodiacs. Hop in and scan for underwater silhouettes and get up close to the range of wildlife that call Antarctica home.

You may wish to enjoy optional expedition activities like day paddling or enjoy a photography lesson from one of the experts onboard. There are lots of handy hints and tips that can be learnt about photographing this icy wilderness and the wildlife you will encounter.

This by-sea exploration allows the best opportunity for whale-spotting and is truly a once-in-a-lifetime adventure!

ITINERARY

TRIP CODE

ACOEGBWD

DEPARTURE

09/03/2025

DURATION

12 Days

LOCATIONS

Antarctica, Antarctic Peninsula



ANTARCTICA - BEST OF ANTARCTICA: WHALE DISCOVERY | OCEAN ENDEAVOUR

DAY 1: Ushuaia, Argentina

Welcome to Ushuaia, Argentina, the gateway to Antarctica. Before you embark on this epic journey, take an included arrival transfer from the airport to your hotel today. There will be a representative waiting at the airport with a sign that has the ship name on it. If you cannot locate them, please refer to your emergency contact information on your final itinerary. Tonight, you'll meet your fellow travellers and our local team in Ushuaia with a welcome meeting in the evening, followed by an optional icebreaker. arrive early, why not head downtown for some souvenir shopping or taste some classic Argentinian flavours at one of Ushuaia's fantastic local restaurants? If you get the chance, watching the sun go down at "The End of the World" (the nickname for the Tierra del Fuego archipelago) is the perfect way to cap off your first night.



DAY 2: Embarkation in Ushuaia

This morning is yours to explore Ushuaia. You can always ask your leader for suggestions, but exploring this remote town on foot makes for a beautiful start to the day. Ushuaia offers enough stunning scenery for any nature-buff, so make sure you've grabbed your camera to snap that snow-capped backdrop. In the afternoon, transfer to the port of Ushuaia where you will board the Ocean Endeavour - your home on the sea for the next 10 nights. After meeting your fellow passengers and Expedition Team and settling into your cabin, you'll set sail through the historic Beagle Channel towards Antarctica. Soak up incredible views as you glimpse your last sight of Argentina, then head inside to join the excitement and learn more about what to expect over the coming days.



TRIP CODE

ACOEAWD

DEPARTURE

09/03/2025

DURATION

12 Days

LOCATIONS

Antarctica, Antarctic Peninsula



ANTARCTICA - BEST OF ANTARCTICA: WHALE DISCOVERY | OCEAN ENDEAVOUR

DAY 3: At Sea - Drake Passage - Days 3 & 4

Spend two days travelling across the legendary waters of the Drake Passage, named after the British seafarer Sir Francis Drake, towards the Antarctic Peninsula and the South Shetland Islands. If conditions allow, there will be a chance to enjoy the outer deck spaces, scouting for dolphins, whales and a variety of seabirds that pass by - including the iconic wandering albatross, with its enormous three-meter wingspan. Our comprehensive lecture program will also get underway for you to join at your leisure, with our team of polar experts sharing fascinating insights into Antarctic history, geology, biology and everything in between! If the weather is on your side, you should reach the Islands of the Antarctic Peninsula by early evening on day four. Make sure you're on deck for this, as the first sighting of land always builds great anticipation on any expedition south.



TRIP CODE

ACOE BWD

DEPARTURE

09/03/2025

DURATION

12 Days

LOCATIONS

Antarctica, Antarctic Peninsula




ANTARCTICA - BEST OF ANTARCTICA: WHALE DISCOVERY | OCEAN ENDEAVOUR

DAY 5: South Shetland & Antarctica - Day 5 to 9

The Antarctic Peninsula is known for a high number of wildlife sightings, not to mention the stunning backdrop of mountains, icy landscapes and water. The perfect combination, as you search for migrating whales. This is why you have five full days to enjoy wildlife opportunities, both from the expansive outer decks of the Ocean Endeavour and via Zodiac cruises and shore excursions. The peak of the migration season is the best opportunity to see these majestic ocean dwellers, as all Antarctic whale species migrate long distances, feeding in the cold, nutrient-rich Southern Ocean during the southern summer. The most common species found in the region are humpback, Minke and fin whales, as well as orcas. An average day on board begins with a wake-up call from your Expedition Leader around 7 am, giving you time to prepare for the day before joining your fellow expeditioners for breakfast in the Polaris restaurant. You will usually have two excursions per day, one in the morning and one in the afternoon, with lunch served on the Ocean Endeavour in between excursions. As whale season is in full swing, you may like to participate in one of our exciting onboard Citizen Science projects – the Happy Whale Project, where you can upload photos of whale’s tails (called flukes) online, along with details of where the images are taken. These are used to analyse and identify the individual whales and track their movement across the oceans. Sightings can happen from the outer decks of the ship, on the ship’s bridge with your Captain or during a Zodiac excursion. Our open bridge policy allows you into the command centre of the Ocean Endeavour for the ultimate behind-the-scenes access and the best place to spot whales. You will also have the daily opportunity for optional adventure activities, including kayaking or day paddle excursions through ice floes, or photography sessions and workshops led by our expert photography guides. Please note: Potential excursions and landing sites are determined by weather and ice conditions and cannot be guaranteed in advance. Spaces on our optional paid kayaking and photography program are limited. Additional costs apply and these must be booked in advance. Please speak to an Intrepid booking agent for more information. Beginners interested in kayaking should take an introductory course prior to the voyage, including how to complete a wet exit. Regardless of your experience, we recommend you take part in some kayaking practice prior to the voyage to ensure that you are comfortable on the water in icy conditions. Kayaking adventures are only conducted during calm weather.

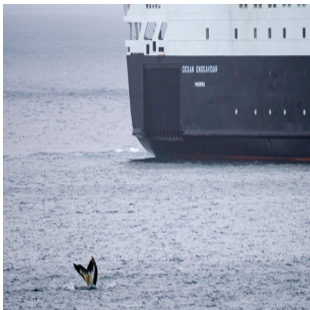


TRIP CODE
ACOEGBWD
DEPARTURE
09/03/2025
DURATION
12 Days
LOCATIONS
Antarctica, Antarctic Peninsula


ANTARCTICA - BEST OF ANTARCTICA: WHALE DISCOVERY | OCEAN ENDEAVOUR

DAY 10: At Sea - Drake Passage - Days 10 & 11

As the Ocean Endeavour starts its return journey north to our home port of Ushuaia, now is the time to reflect on your amazing adventure. We're scheduled to reach the relatively calm waters of the Beagle Channel by the evening of day 11. This evening, your final meal together in the Polaris restaurant is often a highlight, so make sure to live it up and enjoy the moment as you celebrate an incredible adventure with your fellow travellers and Expedition Team. Don't forget the group selfie!



DAY 12: Disembark in Ushuaia

Your Antarctic adventure draws to a close as you disembark the Ocean Endeavour following breakfast. Farewell your fellow guests and your Expedition Team and join a transfer to Ushuaia airport for your onward journey (included for selected flight departures today) or to the city centre of Ushuaia, where you can make your way to your hotel if you are extending your stay and want to spend some more time exploring this incredible part of the world. With much to see and do in this quaint 'End of the World' town, including the Museo Maritimo, Avenida San Martin or even an adventurous hike to the Martial Glacier, your adventure doesn't have to end here. If you would like to stay additional nights in Ushuaia, please speak to your booking agent. Please note: A transfer to the city centre after disembarkation OR a transfer to the airport for onward flights (for selected departures today only) is included. If you are extending your stay or do not meet the requirements for the included transfers then we can arrange transportation at an additional cost, please discuss this with your booking agent. You are advised not to book a flight out of Ushuaia before midday on disembarkation day, in case of delays caused by unfavourable weather conditions. Cruise itinerary is subject to change depending on weather conditions, ice conditions and other factors.



TRIP CODE

ACOEGBWD

DEPARTURE

09/03/2025

DURATION

12 Days

LOCATIONS

Antarctica, Antarctic Peninsula




INCLUSIONS & DETAILS

Accommodation

Hotel & Cabin Onboard a Ship

ANTARCTICA - BEST OF ANTARCTICA: WHALE DISCOVERY | OCEAN ENDEAVOUR

Inclusions	INCLUSIONS All meals onboard the Ocean Endeavour including snacks Accommodation onboard the Ocean Endeavour in booked cabin category Onboard lecture program from Expeditions Team and Naturalists All applicable shore excursions and Zodiac cruising (except paid adventure options with cost) Use of rubber boots on land and use of waterproof outer shell jacket Insulated inner jacket, yours to keep at the end of the voyage Transfer from Ushuaia airport to hotel (Day 1) and pre-night hotel with breakfast Transfer from Ushuaia hotel accommodation to the Ocean Endeavour for embarkation Transports to Ushuaia airport on return to port All port taxes All landing fees Use of onboard gym, sauna, pool and jacuzzi and onboard yoga
	EXCLUSIONS International or internal flights unless specified Airport transfers, taxes and excess baggage charges unless specified Meals other than those specified in the pre-departure information Pre or post cruise travel expenses Visa (if applicable) and passport fees Travel insurance (compulsory) Fuel surcharge may be applied to all bookings Paid adventure options and all personal expenses Tobacco, alcoholic or beverages (other than coffee and tea) Miscellaneous extras Laundry and communication charges on board Gratuities for Expedition team and crew (recommended US\$15 per person per day) For minors under 16 years of age at time of travel; life jackets, waterproof outer shell jacket, insulated inner jacket and boots For guests who require larger sizing; Waterproof outer shell jacket, insulated inner jacket and rubber boots
Difficulty Rating	2 (light adventure)
Single Surcharge	Available on request. No single supplement if willing to share. Contact us for more details.

TRIP CODE
ACOEBWD
DEPARTURE
09/03/2025
DURATION
12 Days
LOCATIONS
Antarctica, Antarctic Peninsula


ANTARCTICA - BEST OF ANTARCTICA: WHALE DISCOVERY | OCEAN ENDEAVOUR

Notes	<p>Prices are based on per person, twin share* (unless otherwise stated for triple/quad cabins)</p> <p>Prices are correct at time of publishing but are subject to change at any time.</p> <p>Itinerary is subject to change depending on weather and ice conditions</p>
Price Dependent upon	<p>Departure date, fuel surcharges, cabin category, currency fluctuations, seasonality and availability.</p>

SUSTAINABILITY

TRIP CODE
ACOE BWD
DEPARTURE
09/03/2025
DURATION
12 Days
LOCATIONS
Antarctica, Antarctic Peninsula
