

HUMBOLDT ISLES EXPEDITION | LA PINTA



INTRODUCTION

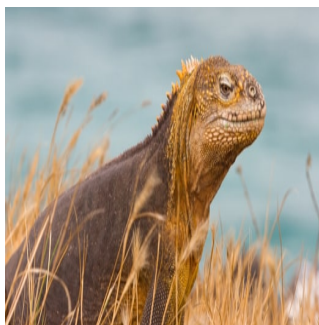
Take off on an expedition cruise to the Galapagos Islands and explore the Humboldt Isles. Discover Santa Fe Island's unspoiled beauty, San Cristobal Island's stunning scenery, Espanola Island's varied animals, and Santa Cruz Island's charming allure. Explore the Galapagos Islands' distinctive ecology including volcanic pathways, go diving into blue lakes, and come across unique animals that are only found in the Galapagos. Come along on a voyage amid unmatched beauty of nature.

You will cruise onboard La Pinta, being a larger vessel she has something for everyone and offers a range of activities and facilities onboard, including a glass bottom boat. The vessel is great for groups and families and those who want to meet people and enjoy a more social atmosphere. The vessel also has a doctor onboard.

ITINERARY

DAY 1: Baltra & South Plaza Island

Let the adventure begin with a morning flight to Baltra Island. Upon arrival, head directly to the dock to board Yacht La Pinta. Your adventure starts with a welcome briefing, safety drill, cabin allocation, and lunch. Then, we'll sail for our first afternoon exploration of South Plaza Island. South Plaza Island The island boasts turquoise waters contrasting against a volcanic landscape. Scarlet sesuvium succulents lead to a grove of prickly-pear cactus, home to colorful Galapagos land iguanas. Lively sea lion colonies and dancing seabirds can be found along the coast. This stunning island offers a perfect introduction to the unique natural wonders of the Galapagos archipelago.



TRIP CODE

GAMTPHI5

DEPARTURE

Select Thursdays

DURATION

5 Days

LOCATIONS

Galapagos Islands, Ecuador, South America



HUMBOLDT ISLES EXPEDITION | LA PINTA

DAY 2: Santa Fe & San Cristobal

Santa Fe Island Explore Santa Fe Island, part of the “Humboldt quartet” of islands in the Galapagos. It’s a hotspot for genetic diversity and home to unique species like the Galapagos hawk and the elusive Santa Fe land iguana. Enjoy kayaking, snorkeling, and coastal exploration in the morning for a memorable visit. Cerro Colorado Tortoise Habitat (San Cristobal Island) After a fulfilling lunch, we visited Puerto Baquerizo Moreno, where Charles Darwin first set foot in the Galapagos Islands. We then drove to Cerro, Colorado, to see the breeding center for giant tortoises in a captivating deciduous forest. The sanctuary is also home to various bird species. We ended the day by exploring the town and its surroundings.



DAY 3: Punta Pitt & Cerro Brujo

Punta Pitt (San Cristobal Island) After arriving at Punta Pitt on the eastern tip of San Cristobal Island, you can enjoy a coastal trail with views of frigates and sea lions. Look out for various species of boobies. If the weather is good, you can take a panga ride or go snorkeling to explore the marine life further. Cerro Brujo (San Cristobal Island) After lunch, take a dinghy ride to Cerro Brujo’s white coral beach, a haven for birdwatching and historical significance, as Charles Darwin explored it in 1835. Enjoy sightings of seabirds, shorebirds, and Galapagos sea lions.



DAY 4: Espanola

Punta Suarez (Espanola Island) Explore Punta Suarez in the morning to see unique lava terrain and remarkable seabird colonies. Keep an eye out for waved albatrosses, boobies, swallow-tail gulls, and the stunning “blowhole” lava formation against the backdrop of the Humboldt Current. Look for colourful marine iguanas. This visit promises unforgettable encounters. End your morning adventure with a delightful lunch back on board. Gardner Bay (Espanola Island) In the afternoon, we’ll visit Gardner Bay’s pristine white coral beach. Here, you can observe playful sea lions, graceful mockingbirds, and charming finches or enjoy snorkeling, kayaking, or a glass-bottom boat ride to explore marine life.



TRIP CODE

GAMTPHI5

DEPARTURE

Select Thursdays

DURATION

5 Days

LOCATIONS

Galapagos Islands, Ecuador,
South America



HUMBOLDT ISLES EXPEDITION | LA PINTA

DAY 5: Santa Cruz & Baltra

Charles Darwin Research Station (Santa Cruz Island) We visited the Charles Darwin Research Station and its giant tortoise captive-rearing program, then traveled by bus across Santa Cruz Island and took a ferry to Baltra. Then taken to the airport for your flight back to the mainland, bidding farewell to the enchanted islands of Galapagos.



TRIP CODE

GAMTPHI5

DEPARTURE

Select Thursdays

DURATION

5 Days

LOCATIONS

Galapagos Islands, Ecuador, South America



INCLUSIONS & DETAILS

Accommodation

Cabin on board ship

INCLUSIONS

- Accommodation in chosen cabin onboard La Pinta
- Transfers in the Galapagos and airport assistance
- All meals and snacks during the cruise
- Water coffee and tea 24/7 & soft drinks with meals
- All excursions as per the itinerary*
- English-Speaking Naturalist guide
- Snorkelling equipment
- Wet suit rental
- Kayak & Paddle board equipment use

Inclusions

EXCLUSIONS

- Return airfares from mainland Ecuador
- Galapagos National Park Entrance Fee (US\$200 per person from Aug 2024 - Subject to change)
- Galapagos Transit Control Card (US\$20 per person - Subject to change)
- Fuel Surcharges
- Alcoholic drinks and other excluded non alcoholic drinks
- Personal expenses
- Gratuities for crew/guides
- Services not specified

Difficulty Rating

2 (light adventure)

Single Surcharge

A single supplement surcharge applies and is subject to availability. Please contact us for more information.

HUMBOLDT ISLES EXPEDITION | LA PINTA

<p>Notes</p>	<p>All entrance fees are subject to change without prior notice. Please note water based activities are subject to weather conditions. Prices are based on per person, twin share* (unless otherwise stated) Prices are correct at time of publishing but are subject to change at any time</p> <p>* Itinerary is subject to change depending on weather conditions and government regulations.</p>
<p>Price Dependent upon</p>	<p>Seasonality, fuel surcharges, currency fluctuations and availability at time of booking.</p>

SUSTAINABILITY

<p>TRIP CODE</p>
<p>GAMTPHI5</p>
<p>DEPARTURE</p>
<p>Select Thursdays</p>
<p>DURATION</p>
<p>5 Days</p>
<p>LOCATIONS</p>
<p>Galapagos Islands, Ecuador, South America</p>
