

THE ARCTIC - JEWELS OF THE ARCTIC FROM OSLO 2026 | GREG MORTIMER



TRIP CODE
ACAEOJA
DEPARTURE
27/06/2026
DURATION
15 Days
LOCATIONS
Spitsbergen, Jan Mayen, Greenland, Iceland

INTRODUCTION

Discover the magic of Svalbard, where the sun barely sets and your heart races with the thrill of spotting polar bears in their natural habitat. Watch walrus bask on sea ice and listen as guillemots call from dramatic cliffs. Venture to East Greenland, where you'll sail through the world's largest fjord, Scoresbysund, and explore Ittoqqortoormiit, one of the most remote Inuit settlements on Earth. Glide among shimmering icebergs, marvel at their intricate shapes, and wander through tundra ablaze with colourful blooms, all while savouring the taste of wild berries.

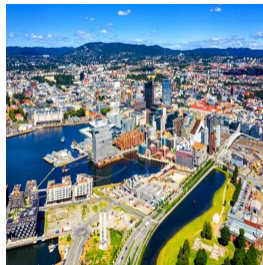


This trip also runs in reverse on 10 July 2026, contact us for more details

ITINERARY

DAY 1: Arrive Oslo

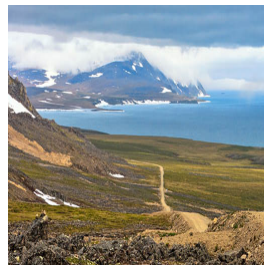
Having made your way to Oslo, you will be met by a representative of Aurora Expeditions and transferred to your group hotel. Upon arrival at your included hotel, please visit the Aurora Expeditions hospitality desk to collect your luggage cabin tags and to speak with our ground operations team, who may have information to share with you about pre-embarkation or to provide you with information about where to dine, withdraw cash or purchase last minute items from a local pharmacy or supermarket. The remainder of your time is at leisure. All meals today are at your own expense. Accommodation: The Clarion Hotel Oslo (or similar)



THE ARCTIC - JEWELS OF THE ARCTIC FROM OSLO 2026 | GREG MORTIMER

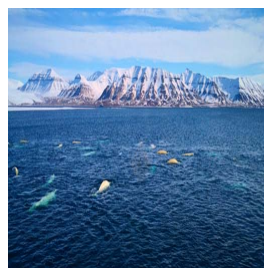
DAY 2: Fly to Longyearbyen & Embarkation

This morning, please ensure your cabin luggage is fitted with cabin tags clearly labelled with your name and cabin number. Enjoy breakfast at the hotel before transferring to the airport for our charter flight to Longyearbyen for embarkation. Any valuables or personal items should be kept on you throughout the day. In Longyearbyen, explore the town on a guided tour. After the tour, you will be transferred directly to the pier to embark in the late afternoon. Settle into your cabin before attending important safety briefings and enjoy the thrill of departure as we ‘throw the lines’ and set sail. Note: the excursion is contingent on the arrival time of our charter flight to Longyearbyen.



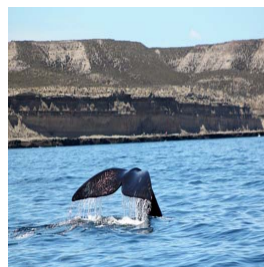
DAY 3: Svalbard - Day 3 to 5

Svalbard offers arctic wilderness at its best. The members of our experienced Expedition Team, who have made countless journeys to this area, will use their expertise to tailor our itinerary, choosing the best options based on the prevailing weather, sea-ice conditions and opportunities for wildlife encounters. Phenomenal fjords, magnificent mountains ranges, and a polar desert rich in fossils set the stage for heroic tales of early exploration. See walrus hauled-out on sea ice or on beaches. On land, we stretch our legs on walks across tundra carpeted in brightly coloured wildflowers. We visit towering cliffs noisy with nesting guillemots and puffins, and scree slopes that hold Svalbard’s largest little auk colonies. If you have chosen an optional activity such as kayaking, you will have an opportunity to enjoy that activity when conditions allow. For those who are enthusiastic to participate in a polar plunge, as soon as conditions are suitable, you will hear the announcement to prepare for an exhilarating dip - a memory you will savour for years to come.



DAY 6: At Sea

As we sail towards the coast of East Greenland, we may encounter whales feeding in the rich waters of the north. As we approach East Greenland, be prepared to encounter more pack ice and perhaps spot seals and a variety of seabirds, including the northern fulmar and Brünnich’s guillemot. The strong, icy currents have isolated East Greenland from the Polar Basin, attracting large numbers of fish, seals and whales. Climatic conditions and the concentration of ice in the vicinity often create thick morning fog that only vanishes in presence of the midday sun. Our experts will inform and entertain us with fascinating discussions on plants, animals, ice and heroic tales of exploration.



TRIP CODE

ACAEOJA

DEPARTURE

27/06/2026

DURATION

15 Days

LOCATIONS

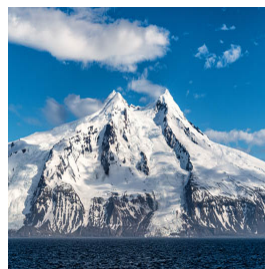
Spitsbergen, Jan Mayen, Greenland, Iceland



THE ARCTIC - JEWELS OF THE ARCTIC FROM OSLO 2026 | GREG MORTIMER

DAY 7: Jan Mayen

The approach to Jan Mayen is spectacular. The huge 2,277-metre (7,470 foot) Beerenberg volcano is the northernmost active volcano in the world, and it last erupted in 1985. The northern part of the island is a great place to look for whales and dolphins and contains impressive glaciers, some of which reach the sea. If the weather is favourable, we will try to land at Kvalrossbukta, a relatively sheltered bay on the island's west coast.



TRIP CODE

ACAEOJA

DEPARTURE

27/06/2026

DURATION

15 Days

LOCATIONS

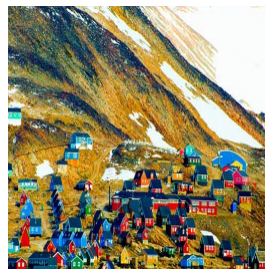
Spitsbergen, Jan Mayen,
Greenland, Iceland



THE ARCTIC - JEWELS OF THE ARCTIC FROM OSLO 2026 | GREG MORTIMER

DAY 8: East Greenland - Day 8 to 13

In the coming days, a host of choices are available to us, and depending on ice and weather conditions, the east coast of Greenland is ours to explore. Our experienced Expedition Team, who have made countless journeys to this area, will use their expertise to tailor our itinerary on a day-to-day basis. This allows us to make best use of the prevailing weather, ice conditions and encounters with wildlife. We generally attempt up to two landings or Zodiac excursions per day, including cruising along spectacular ice cliffs, following whales feeding near the surface. Be prepared to experience ice - and lots of it! East Greenland contains some of the Arctic's most impressive scenery. Deep fjords and narrow channels, flanked by sharp ice-clad peaks soaring up to 2,000 metres (6,562 feet), and glaciers birthing gigantic icebergs that drift throughout the fjord system, combine to create breathtaking scenes. The tundra landscape is home to musk oxen, arctic hare and reindeer. Throughout the area there are ancient Thule archaeological sites, historical trappers' huts, and the cabins of present-day Inuit hunters. A highlight is a visit to the Inuit village of Ittoqqortoormiit, the most isolated and northernmost permanent settlement in the region, with approximately 450 inhabitants. The community has an excellent museum, gift shop, an abundance of Greenlandic sled dogs and provides the opportunity to meet the friendly locals. We hope to explore Scoresbysund, the world's largest fjord and a favourite hunting ground of the local Inuit. Massive glaciers flow into this fjord, the birthplace of hundreds of majestic Greenland icebergs. It is a spectacular place that simply needs to be seen to be believed. North of Scoresbysund lie Kong Oskar and Kaiser Franz Josef fjords, two of the most significant fjord systems in Greenland, each one encompassing several smaller fjords and sounds. Thanks to the fertile volcanic soil and the surrounding mountains offering protection from strong winds, the area is rich in wildlife. You may spot everything from musk ox and arctic foxes to mountain hares, and even reindeer, near the fjord. Look skyward and you could catch a glimpse of birds, including the glaucous gull, black-legged kittiwake, northern fulmar, common raven and common eider. We will attempt to reach Kaiser Franz Josef Fjord, a remote and rarely visited fjord system with countless opportunities for exploration, located within the Northeast Greenland National Park. We hope to cruise through Kong Oskar Fjord, we marvel at the geological beauty of the mountains. We will then head south along the coast of Liverpool Land, with our passage dependent on ice conditions. We stretch our legs on hikes across tundra in search of ancient graveyards and summer villages occupied 3,000 years ago by Inuit. We may see musk ox, arctic hare and reindeer grazing. The maze of calm, interconnecting waterways in this area provides excellent opportunities for sea kayaking. We will see ring seals, perhaps catch a glimpse of the elusive narwhal, and maybe even a polar bear hunting on pack ice.



TRIP CODE

ACAEOJA

DEPARTURE

27/06/2026

DURATION

15 Days

LOCATIONS

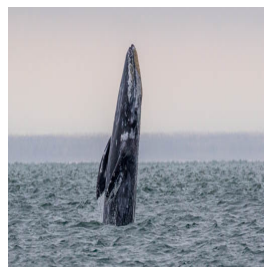
Spitsbergen, Jan Mayen, Greenland, Iceland



THE ARCTIC - JEWELS OF THE ARCTIC FROM OSLO 2026 | GREG MORTIMER

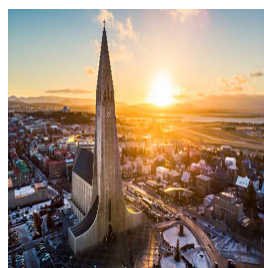
DAY 14: Denmark Strait

Crossing the Denmark Strait to Iceland, search for whale blows and photograph the many seabirds that trail our ship in the ever-present arctic winds.



DAY 15: Disembark in Reykjavik

During the early morning, we cruise into Reykjavik and disembark at approximately 8.00 am. Farewell your Expedition Team and fellow passengers as we all continue our onward journeys. Transfer to Keflavik airport. Note: At the conclusion of the voyage, we recommend booking flights departing after 12.00 pm on the day of disembarkation in case there are delays. *Please note: Cruise itinerary is subject to change depending on weather conditions, ice conditions and other factors.



INCLUSIONS & DETAILS

Accommodation

Hotel & Cabin On board a Ship

TRIP CODE

ACAEOJA

DEPARTURE

27/06/2026

DURATION

15 Days

LOCATIONS

Spitsbergen, Jan Mayen, Greenland, Iceland



THE ARCTIC - JEWELS OF THE ARCTIC FROM OSLO 2026 | GREG MORTIMER

Inclusions

INCLUSIONS

All transfers as mentioned in the itinerary.
 One night's hotel accommodation including breakfast, in Oslo on Day 1.
 Charter flight from Oslo to Longyearbyen on Day 2.
 Sightseeing tour of Longyearbyen, prior to embarkation, on Day 2 (time permitting).
 Onboard accommodation during voyage, including daily cabin service.
 All meals, snacks, tea and coffee during voyage.
 Beer, house wine and soft drinks with dinner.
 Captain's Farewell reception including four-course dinner, house cocktails, house beer and wine, non-alcoholic beverages.
 All shore excursions and Zodiac cruises.
 Educational lectures and guiding services provided by Expedition Team.
 Complimentary access to onboard expedition doctor and medical clinic (initial consultation).
 One 3-in-1 waterproof, polar expedition jacket.
 Complimentary use of Muck Boots during the voyage.
 Comprehensive pre-departure information.
 Port surcharges, permits and landing fees.
 Wi-Fi. Please note we travel to remote regions and therefore the connection can be unreliable.

EXCLUSIONS

International or domestic flights - unless specified in itinerary
 Transfers - unless specified in itinerary
 Airport arrival or departure taxes
 Passport, visa, reciprocity and vaccination fees and charges
 Travel insurance or emergency evacuation charges
 Hotels and meals - unless specified in the itinerary
 Optional excursions and optional activity surcharges
 All items of a personal nature, including but not limited to alcoholic beverages and soft drinks (outside of dinner service), laundry services, personal clothing, medical expenses, wi-fi, email or phone charges
 Gratuities for ship's crew - *(A \$15 USD per person per day gratuity for the crew is automatically added to your onboard account. It is at your discretion if you would like to remove the tip (or adjust the amount) when you settle your bill. It is not necessary to tip the expedition team members. This gratuity amount is included for suites as part of their 'Suite Benefits'.)*

Difficulty Rating 2 (light adventure)

Single Surcharge Subject to availability upon request. Contact us for more details.

TRIP CODE
ACAEOJA
DEPARTURE
27/06/2026
DURATION
15 Days
LOCATIONS
Spitsbergen, Jan Mayen, Greenland, Iceland



THE ARCTIC - JEWELS OF THE ARCTIC FROM OSLO 2026 | GREG MORTIMER

Notes	<p>Prices are based on per person, may be based on quad/triple/twin share.</p> <p>Prices are correct at time of publishing but are subject to change at any time.</p> <p>Itinerary is subject to change depending on weather and ice conditions</p>
Price Dependent upon	<p>Departure date, fuel surcharges, cabin category, currency fluctuations, seasonality and availability.</p>

SUSTAINABILITY

TRIP CODE	ACAEOJA
DEPARTURE	27/06/2026
DURATION	15 Days
LOCATIONS	Spitsbergen, Jan Mayen, Greenland, Iceland

